

Master Planning

EYP/®

/ about EYP

EYP is a global provider of comprehensive high-performance building design, research, and consulting services. We are five sectors – Higher Education, Government, Healthcare, Science & Technology, and Energy – who work as one firm to help our clients address some of the most critical issues facing our nation and our world. Our professionals work across 15 offices in the United States and Europe.

The only design firm to have been ranked in the Top 5 for sustainability for four consecutive years by *Architect Magazine*, EYP is committed to creating rich, productive, and inspiring environments that promote human well-being, preserve natural resources, and provide flexibility and resilience for the future. Our knowledge-based innovation strategy helps promote action-oriented public dialogue about the future of the built environment.

Disciplines

Architecture, Engineering, Energy, Environmental Graphic Design, Interior Design, Master Planning

Integrated Design Expertise

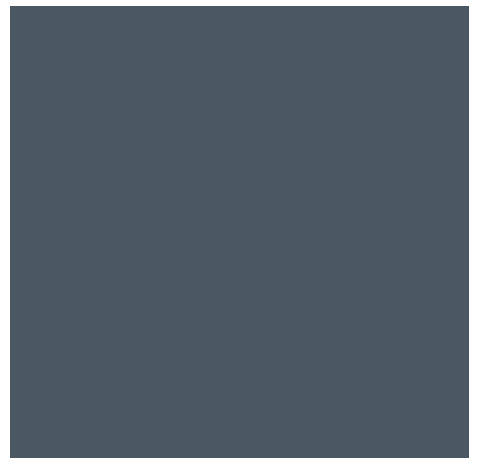
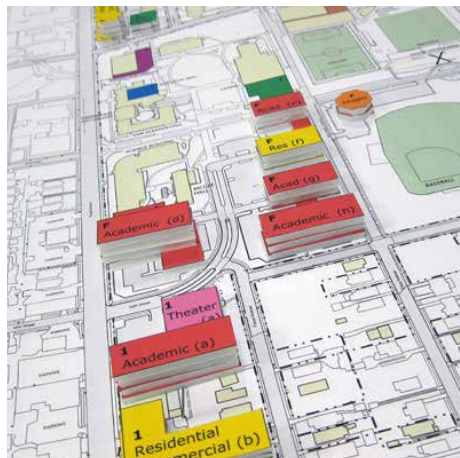
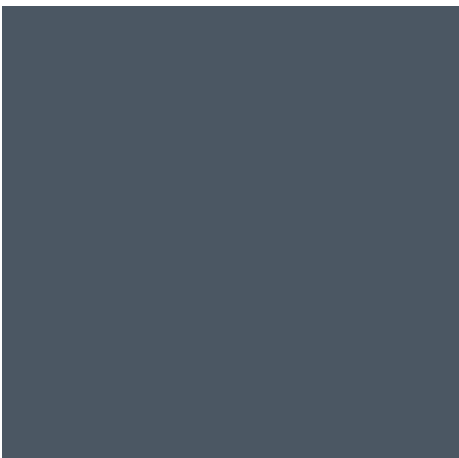
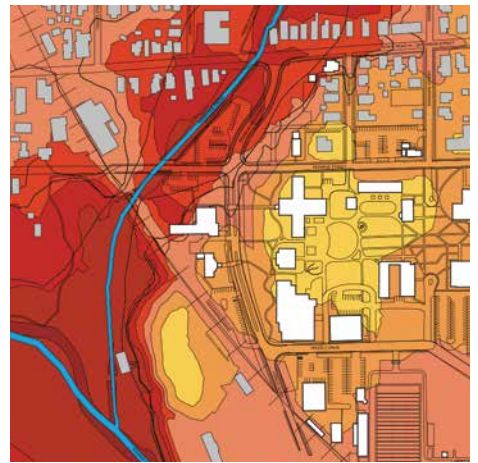
- Academic Innovation
- Embassies
- Energy & Sustainability
- Health Education
- Healthcare
- Historic Preservation
- Libraries
- Master Planning
- Mission Critical
- Modernization
- Science & Technology
- STEM
- Student Life
- Workplace

Research

The right building design can help organizations advance their mission and goals. Our research program makes us better designers and more valuable advisors to our clients – and helps our clients make more strategic decisions about their buildings. Our open innovation approach values collective intelligence. We partner with outside experts in many disciplines to transcend the limits of current thinking and expectations, collaboratively exploring and testing ideas in Building Science, Energy, Healthcare Design, Living-Learning, STEM, and Workplace.

Recognition

- 2017 Architect 50 – *Architect Magazine*
- 2017 Top 25 Architecture Firms – *Architectural Record*
- 2017 Top 25 Architecture & Engineering Firms – *Engineering News-Record*
- 2017 MEP Giants – *Consulting-Specifying Engineer*
- 2017 Giants 300 – *Building Design + Construction*
- 2017 Top 500 Design Firms – *Engineering News-Record*
- 2017 Top Architects – #1 for Healthcare Renovation – *Health Facilities Construction Quarterly*



/ master planning

Our master planning approach is mission and purpose based, geared toward our clients' fundamental objectives. Our work strives to reflect an appreciation of uniqueness and authenticity in the spirit of the place. Through practiced discipline — study, collaboration, and consensus building — we create forward-thinking, practical frameworks with the power to realize each institution's vision. We begin by understanding our clients' goals, needs, and resources in relation to their aspirations and challenges such as sustainability, market competition, demographic trends, and security. The perspective we gain enables us to identify and evaluate the best alternatives for long-term development.

Contact

John Baxter, AIA, LEED AP

Higher Education Sector Leader, Principal

202 471 5000

jbaxter@eypae.com

eypae.com

Franklin College Franklin, IN

Campus Master Plan Update

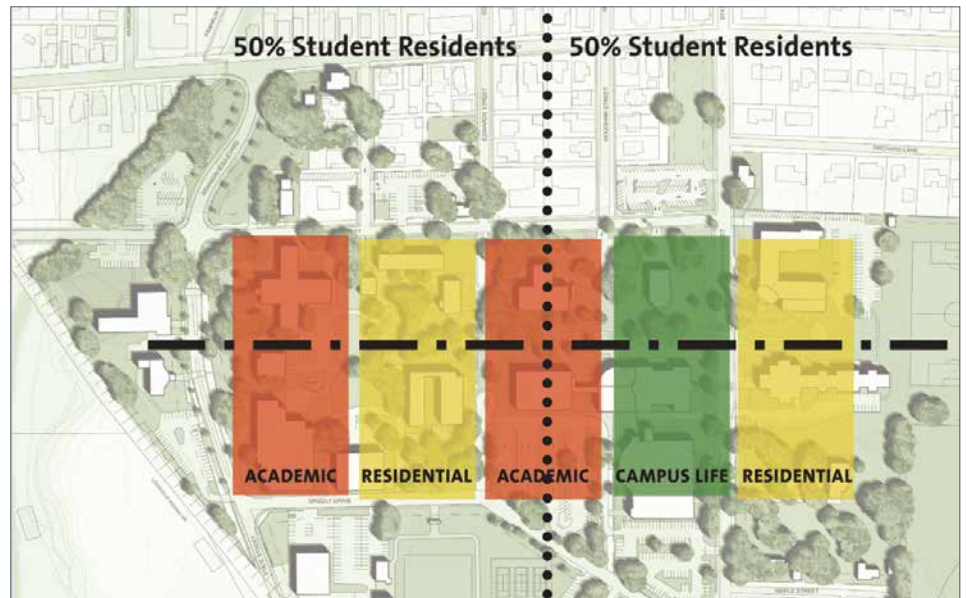


To advance its mission and strategic plan, the College required a framework for sustainable development to preserve the historic character of its core campus and its integrated land-use and open space patterns.

EYP assisted the College in defining building requirements and identifying optimal sites for new construction and landscape improvements. Planning studies encompassed site analysis and design; building condition and energy survey; preparation of a space inventory database and space utilization analyses; and facility programming.

Franklin's new master plan reflects the campus's 175-year evolution along the principles of Thomas Jefferson's academical village. To meet the College's goals for reducing greenhouse gas emissions, the plan features projects for recycling as well as reinvigorating existing buildings or expanding them where program requirements substantiate the need for additional space. Land development proposals create athletic and recreational fields on recently acquired acreage east of the core campus.

- Founded 1834
- Enrollment: 1,050
- No. Buildings: 24
- GSF: 535,721
- Acreage: 345



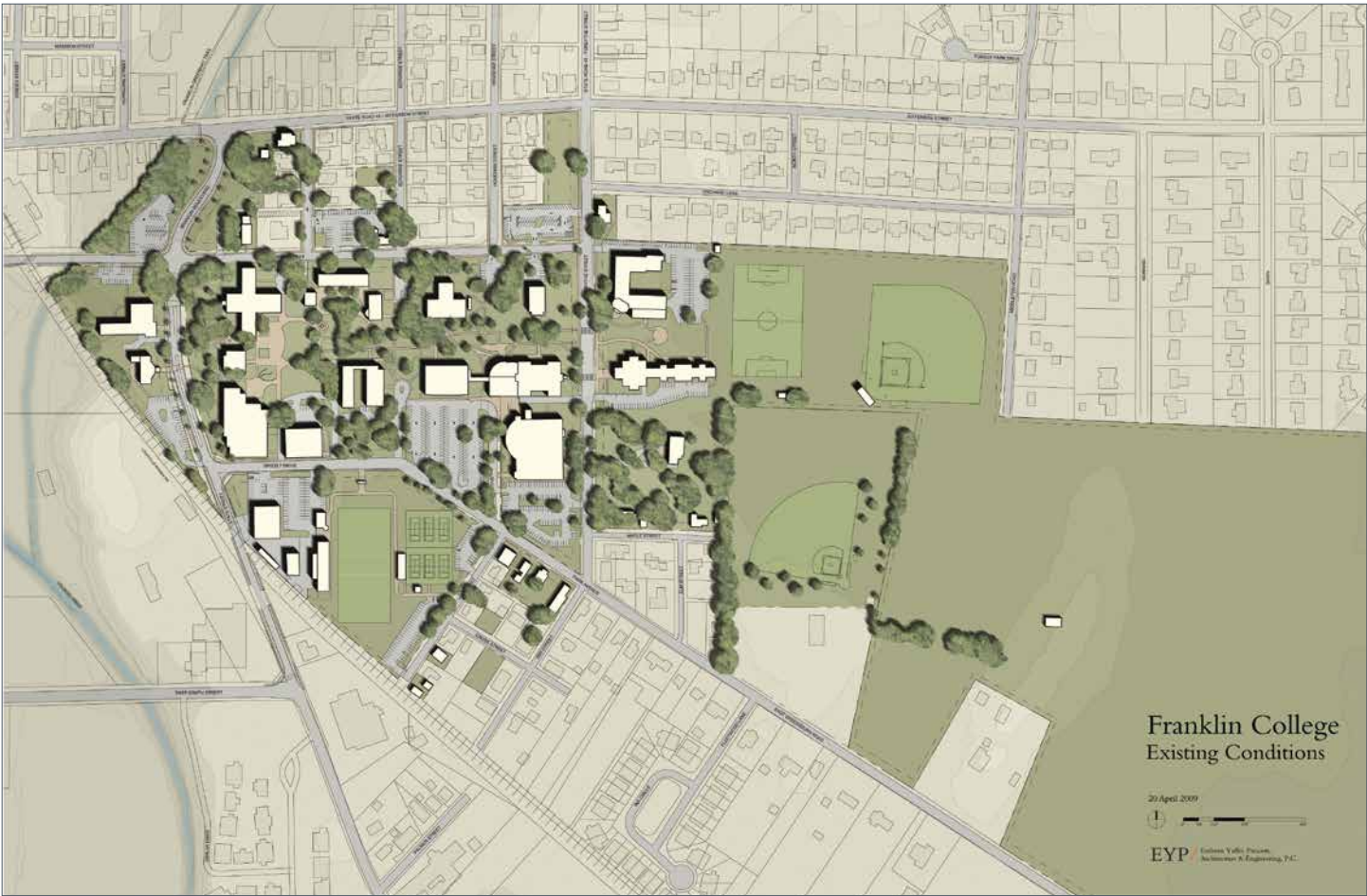
Land Use Pattern



Core Open Space



Dame Mall



Rockhurst University Kansas City, MO

Campus Master Plan



To strengthen its identity as an inclusive community resource and to maximize a constrained urban campus, Rockhurst needed to create a compelling vision to advance academic excellence through reasoned development.

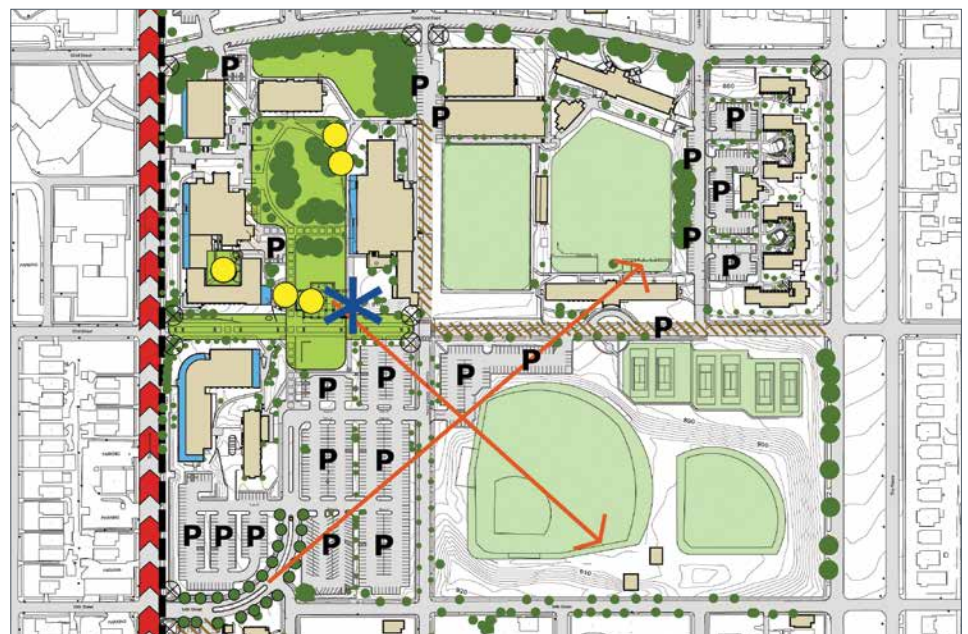
Our multidisciplinary team helped the University plan for program development while relating to its residential and commercial context. Proposed buildings along a major avenue will introduce retail spaces or activities, contributing to the local economy and creating a more porous campus edge that encourages visitors. A donor walk will draw pedestrians across campus green spaces. Sustainable elements such as rain gardens and green roofs will create a more pleasant, sustainable campus, while six sacred spaces will invite quiet reflection. Renovation of historic Sedgwick Hall with addition of a winter garden will establish a new campus focal point.

Rockhurst's plan positions the University as a collaborative community partner that will help advance civic development through its campus renewal.

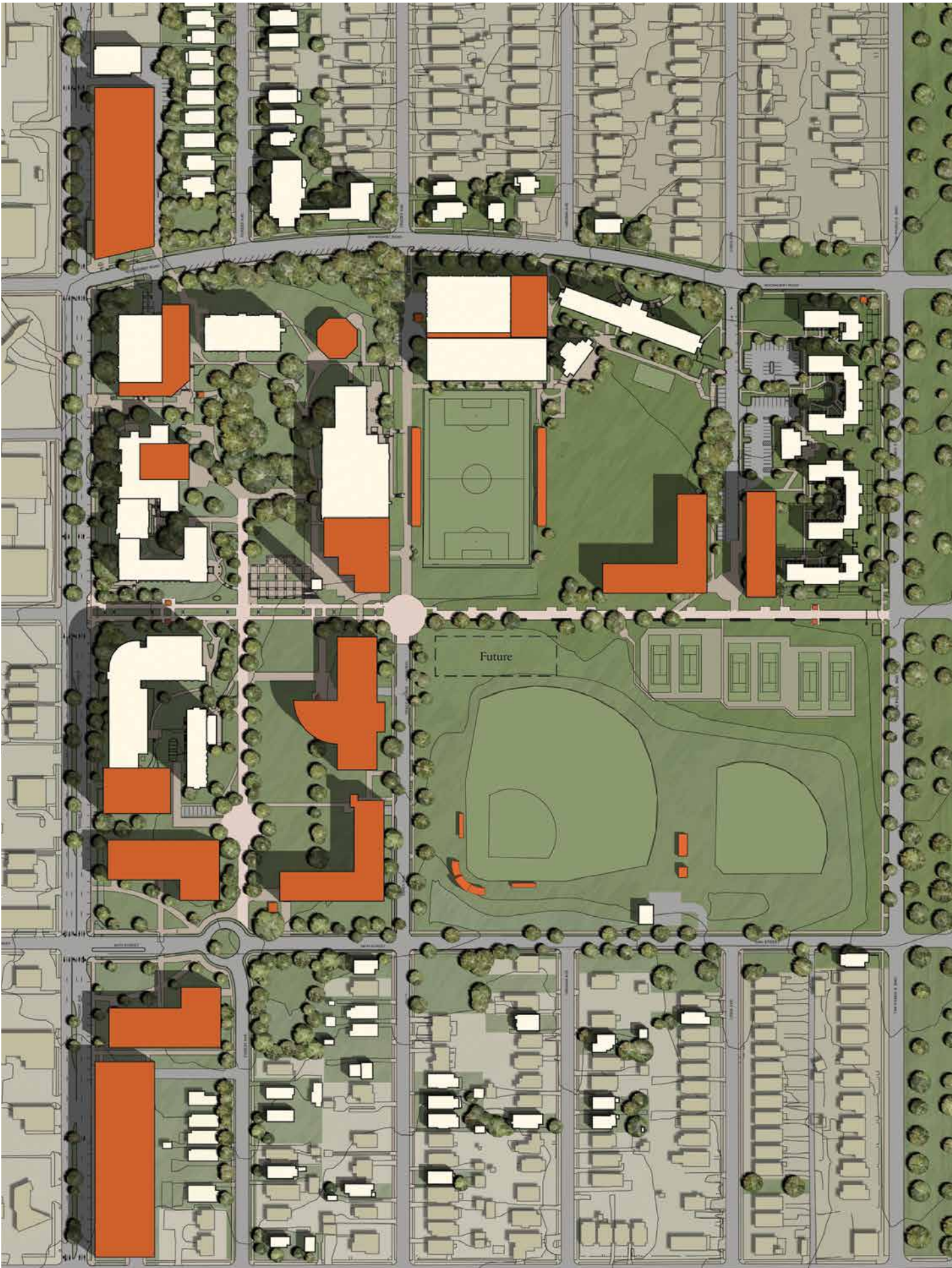
- Founded: 1910
- Enrollment: 2,350
- No. Buildings: 23
- GSF: 648,459
- Acreage: 62



Proposed Campus Development Zones



Detail / Existing Design Features



Chatham University Pittsburgh, PA

Campus Master Plan

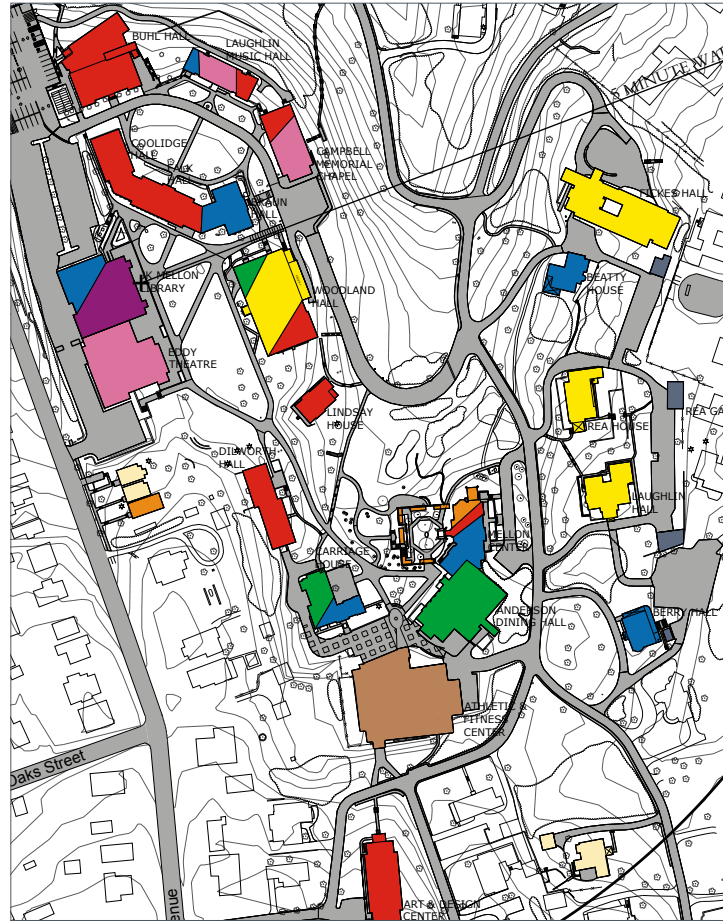


As an early signatory of the Presidents Climate Commitment, the University required a strategic framework to guide sustainable development of its core campus as well as establishment of a satellite location within a nearby urban redevelopment district.

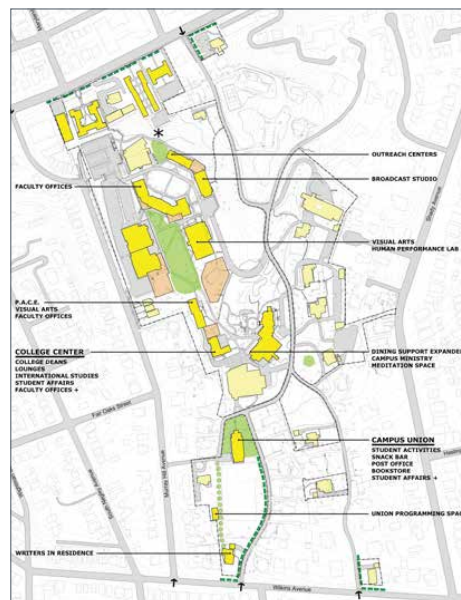
Campus planning studies undertook a complete update of the campus space inventory database and an intensive utilization analysis of all instructional space. Featured proposals included: access enhancements; energy-savings measures; intensified building reuses and space reallocations; and a focused program for landscape refurbishment.

The plan underscores Chatham's identity as a champion of environmental responsibility, while establishing the magnitude of space required for relocation of graduate programs to an urban redevelopment district, a strategic initiative to advance graduate programs and the institution's profile. The interim phase of the plan embraces a near-term no-build strategy. Sites for new construction were identified in anticipation of the long-term development of the Shady Side campus.

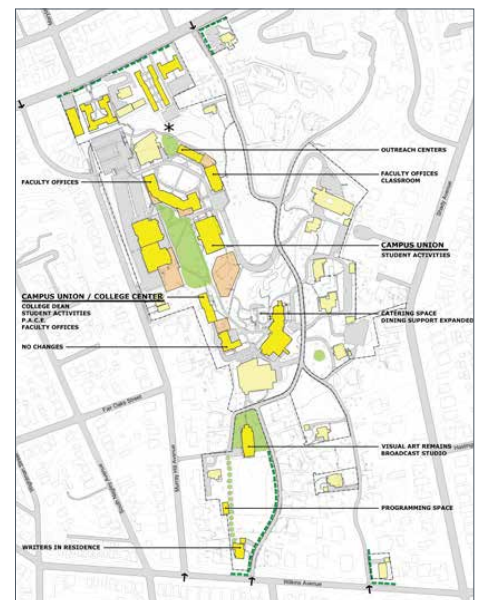
- Founded: 1869
- Enrollment: 1,310
- No. Buildings: 30
- GSF: 602,656
- Acreage: 38



Detail / Existing Building Uses



No-build Reuse / Option 1



No-build Reuse / Option 2



Harvard University Cambridge, MA
Strategic Plan for Housing Renewal

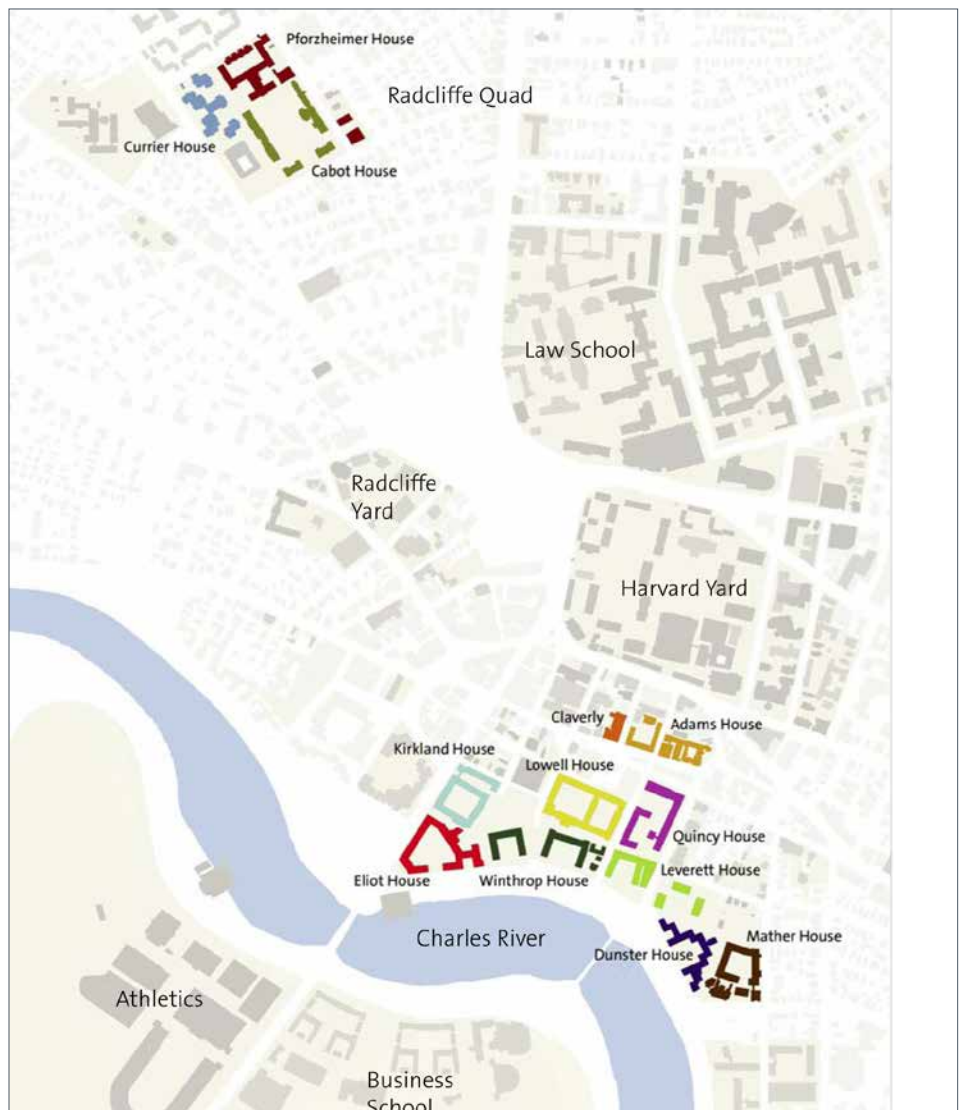


We partnered with the University to develop programming, technical, preservation, and sustainability guidelines to ensure the capacity of the historic House system to fulfill its mission while preserving its historic fabric. Our report consistently sets forth the process, program, and technical aspects of House renewal; establishes appropriate benchmarks for the University's decision-makers during the renewal program; and provides parity and equity in design approach among the individual House renewal projects. On the basis of the Winthrop House energy model, the guidelines anticipate major strategic achievements that will help the University meet its goal of reducing total greenhouse gas emissions by 30 percent.

To develop an understanding of the existing conditions of the Houses (totaling approximately 2 million square feet), our architects, engineers, and preservationists thoroughly assessed four representative buildings. Findings demonstrated that potentially failing systems required replacement to such an extent that buildings would have to be brought up to current code and accessibility standards, providing an opportunity for the College to renew its residential life program.

Based on the goals and programmatic needs established in meetings with a wide variety of constituents, we developed a program which was test-fitted into existing buildings to confirm that bed capacity, unit mix, and community space needs could be accommodated. This effort was complemented by a survey of important cultural resources within and around the Houses.

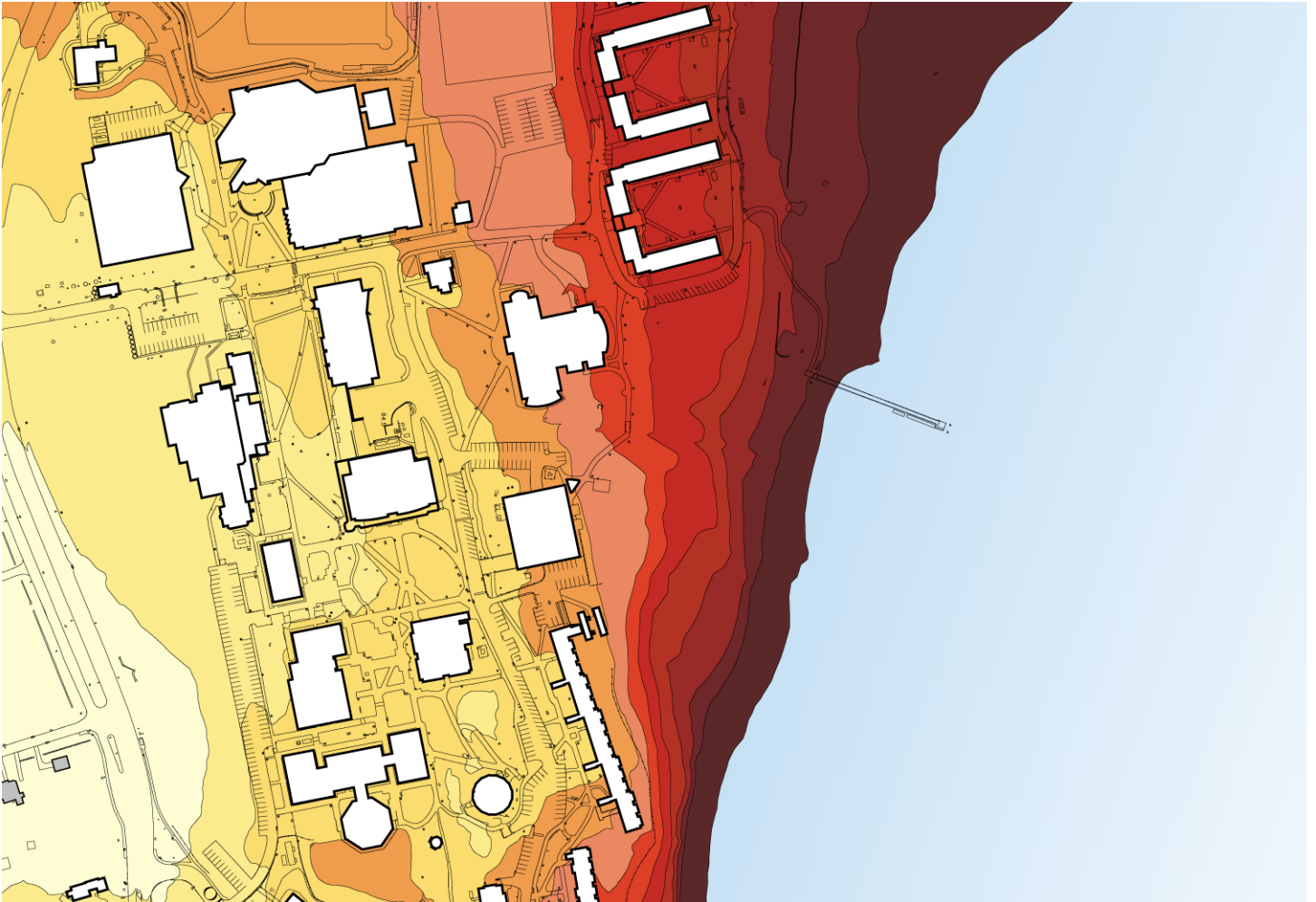
- 2,400,000 SF
- Programming & Planning





Roger Williams University Bristol, RI

Campus Master Plan

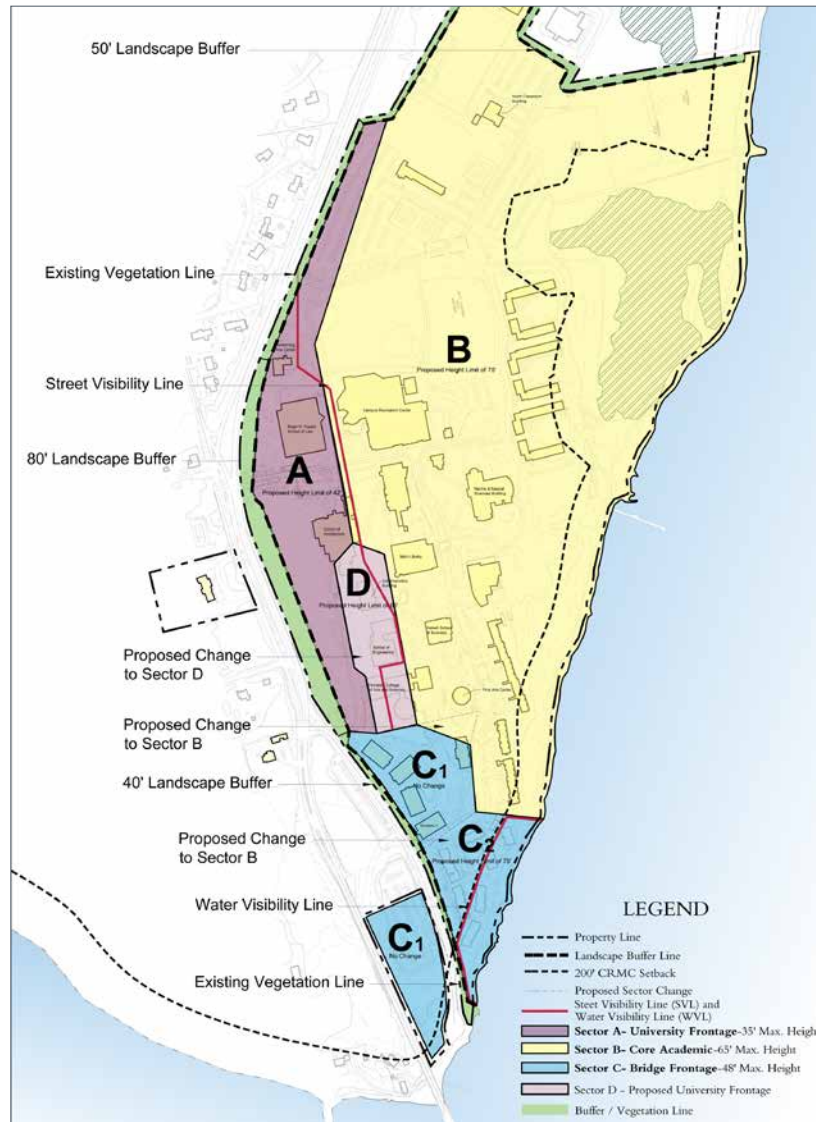


The University required a comprehensive master plan to support its strategic goals for sustainable land development to consolidate undergraduate student housing on campus and create appropriate academic program space, including classrooms and library facilities.

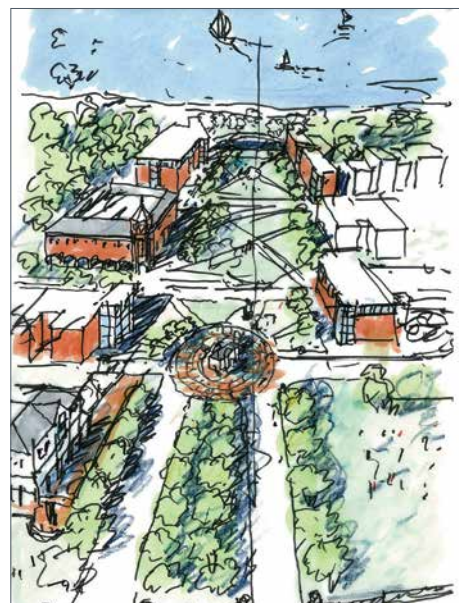
EYP provided a framework for developing the site and buildings appropriate to the institution’s image and strategic goals. Our team analyzed both current and planned facilities and offered recommendations on potential energy efficiency gains as well as alternative and renewable energy sources. Initiatives are cast for a ten-year timeframe within the context of a twenty-year land development strategy.

The master plan provides the University with a functional framework for sustainable growth to create spaces suitable to its distinctive academic programs.

- Founded: 1956
- Enrollment: 4,000
- No. Buildings: 38
- GSF: 1,198,630
- Acreage: 144



Zoning Study



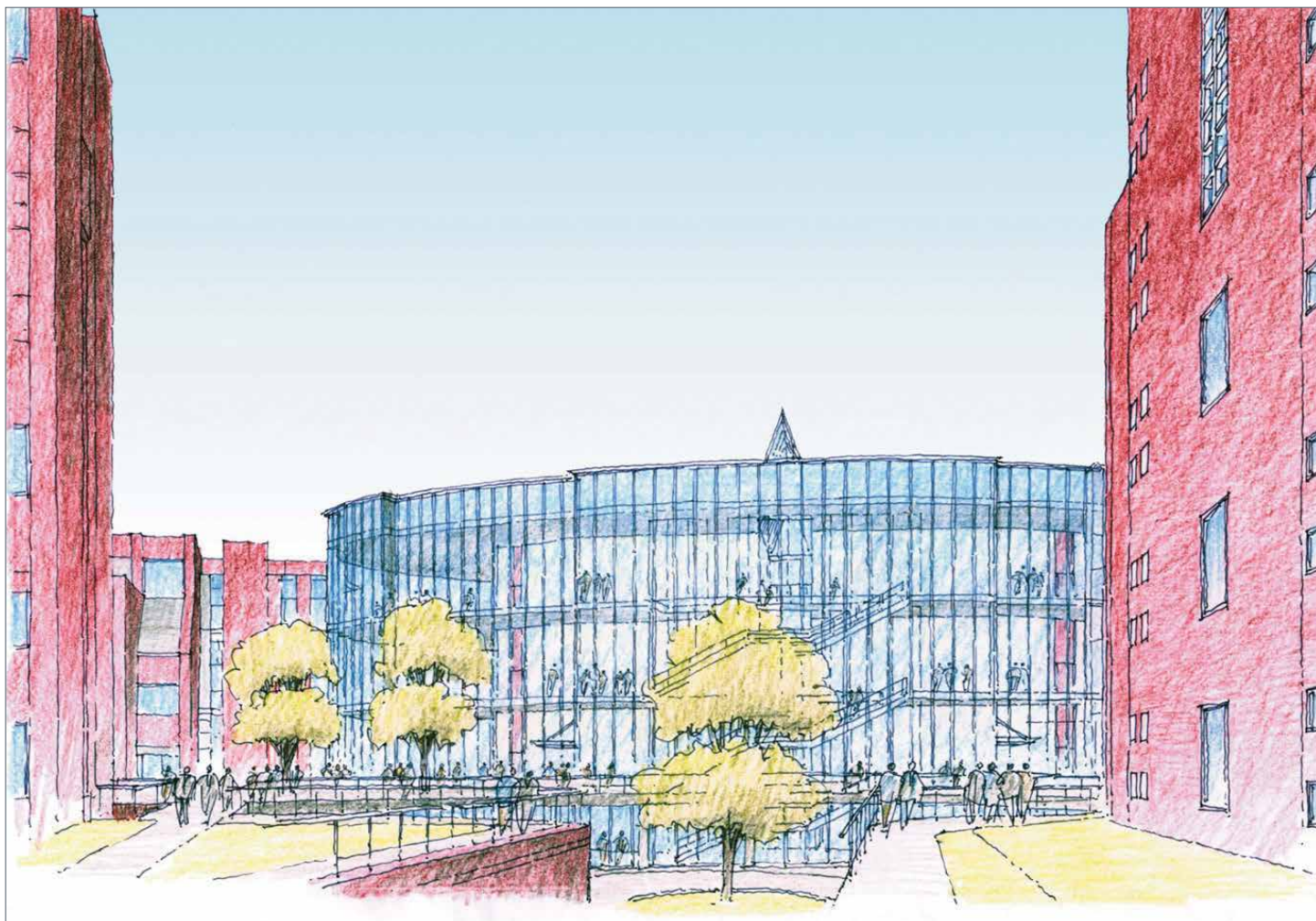
Concept Option



Land Uses



Harvard University Cambridge, MA
Kennedy School of Government
Facility Planning Study

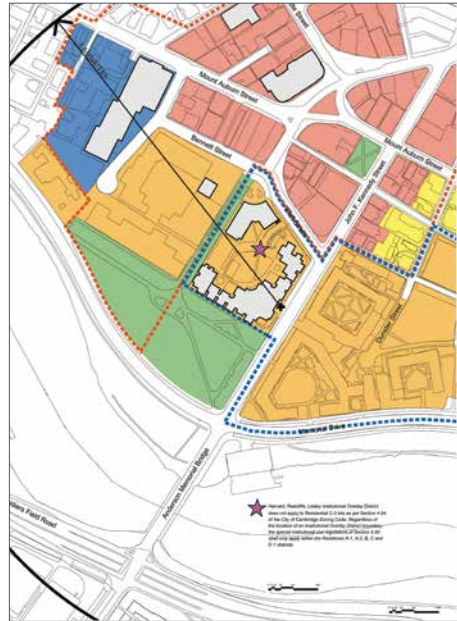


The School needed to assess its existing facilities and space utilization to develop a strategy for near-term improvement with a view toward the long-term potential for campus development.

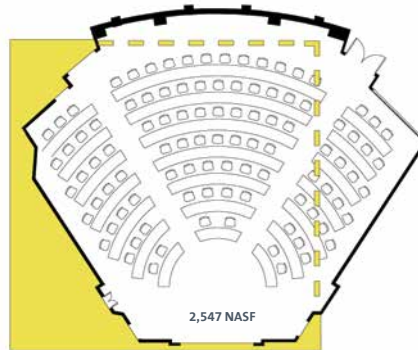
Our multidisciplinary team provided short-term and long-term improvement plans for Harvard Kennedy School classrooms and teaching spaces. Our design exploration tested alternative concepts and the capacity of the existing core campus for long-term space use and development.

EYP created a strategic space program that encompasses the entire HKS campus. We were subsequently commissioned by the University to undertake the first classroom improvement project, the renovation of Weiner Auditorium in Taubman Hall.

- Founded: 1936
- Enrollment: 1,020
- No. Buildings: 4 Main Campus
- GSF: 214,754
- Acreage: 2.9



District Zoning



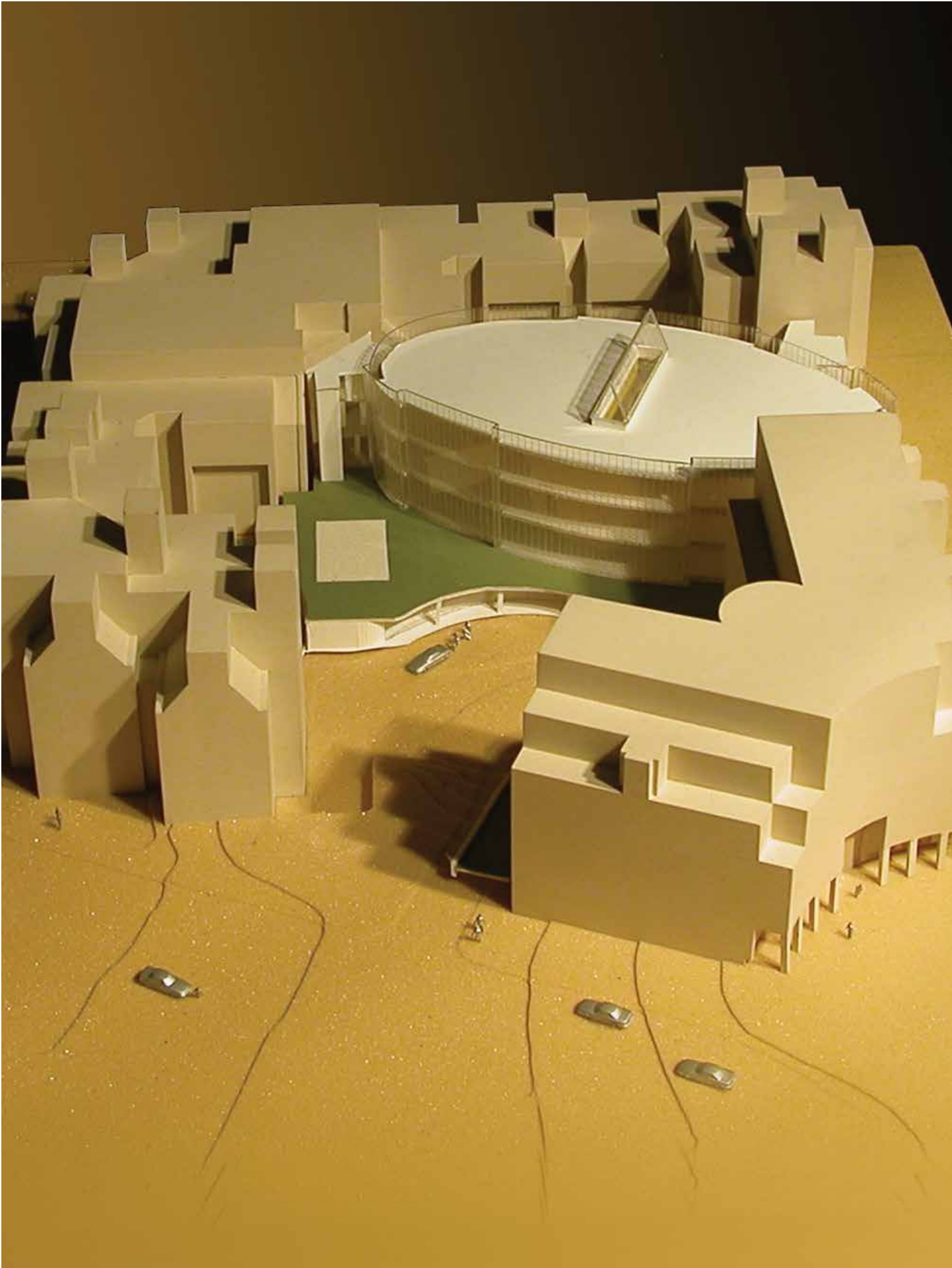
Classroom Analysis



Microclimate Study



Existing Space Uses



The College of New Jersey Ewing, NJ
Campus Academic and Administrative Facilities
Master Plan



2009 - 2011

The College of New Jersey sought a campus master plan that could help achieve its strategic goals, including, enrollment growth; enhancement of the residential experience; the living/learning environment; and meeting its aspirations for sustainability and energy efficiency.

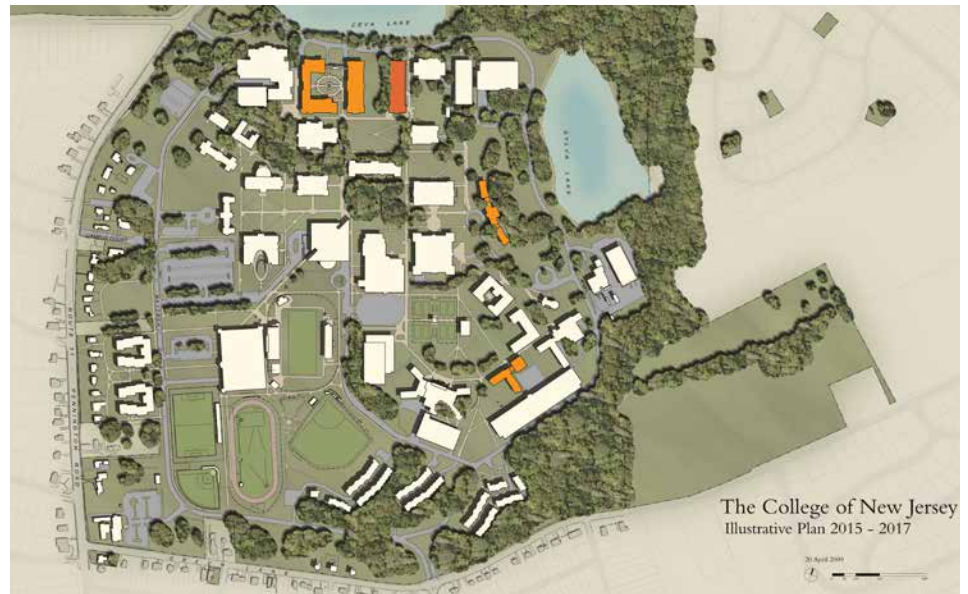
The master plan for the College's academic precinct encompasses seven different departments housed in eight campus buildings. EYP provided programming, concept development, and prioritizing schedules for building replacement, renovation, and new construction.

The College's master plan provides a unified and integrated solution to functional obsolescence in a systematic, prudent, and purposeful manner to advance the mission and aspirations of the College.

- Founded: 1855
- Enrollment: 5,600
- No. buildings: 60+
- GSF: 2,750,000
- Acreage: 289



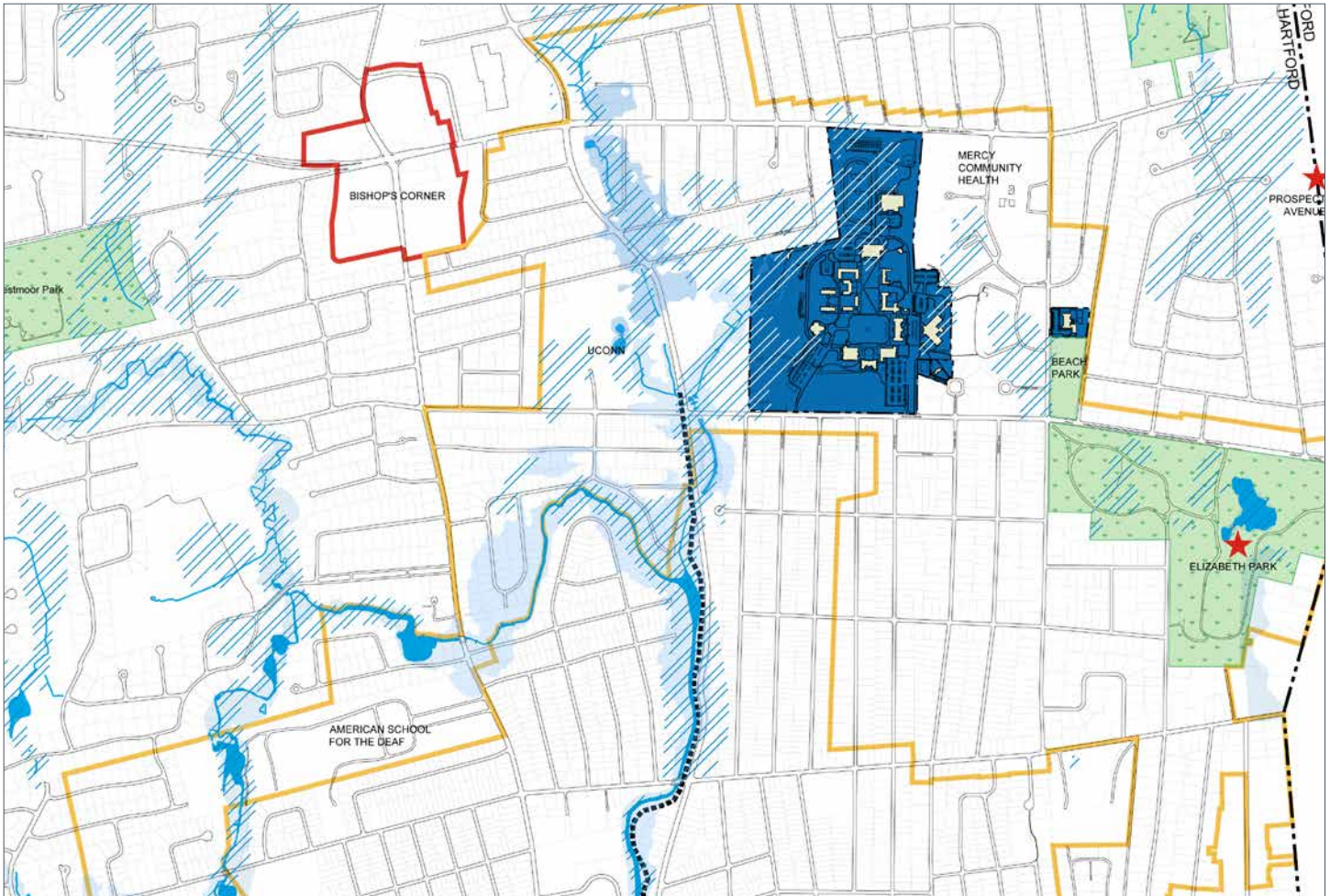
2012 - 2014



2015 - 2017



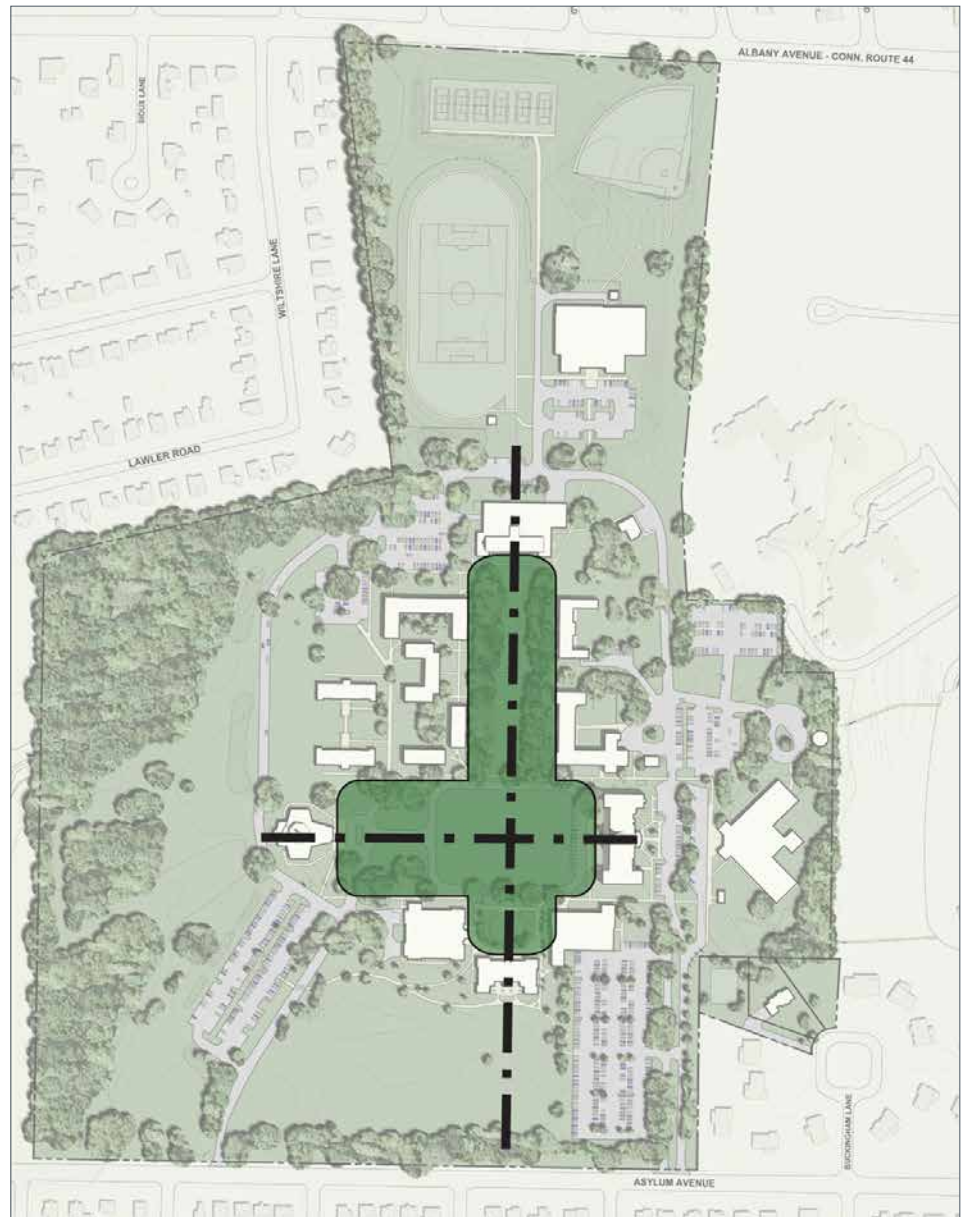
Saint Joseph College West Hartford, CT Master Plan



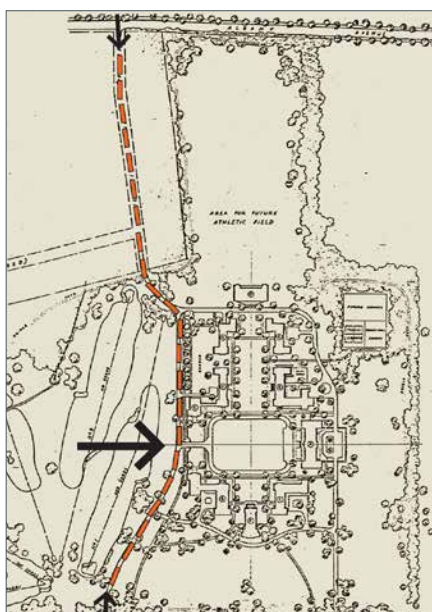
To complement and advance its mission, the College required a framework for reasoned and sustainable development of its buildings and grounds.

The plan addresses present-day challenges while anticipating potentials for the future. The campus's Olmsted quadrangles and Collegiate Georgian architecture will be preserved. Core proposals include the renovation and re-use of iconic campus buildings; the creation of a new center for allied sciences; and the relocation of grounds services. Site development proposals celebrate Saint Joseph's heritage and Catholic identity, while ensuring a learning environment appropriate to the College's focus on academic excellence and personal development.

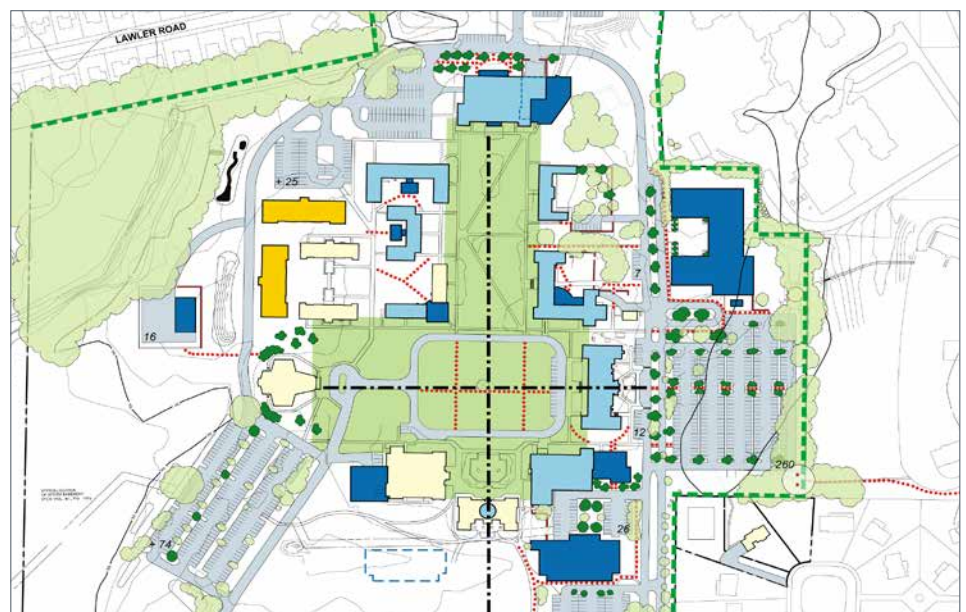
- Founded: 1932
- Enrollment: 1,040
- No. Buildings: 20
- GSF: 462,650
- Acreage: 85



Heritage Open Space



Olmsted Concept c. 1933



Master Plan Concept



NECK ROAD

WILSHIRE LANE

SWOLD DRIVE

PENN DRIVE

BLAND ROAD

BURN ROAD

JAKER LANE

SOUX LANE

WILSHIRE LANE

SEYMOUR ROAD

BRANSON ROAD

PILGRIM ROAD

NORWOOD ROAD

COLONY ROAD

LAWLER ROAD

ALBANY AVENUE - CONN. ROUTE 44

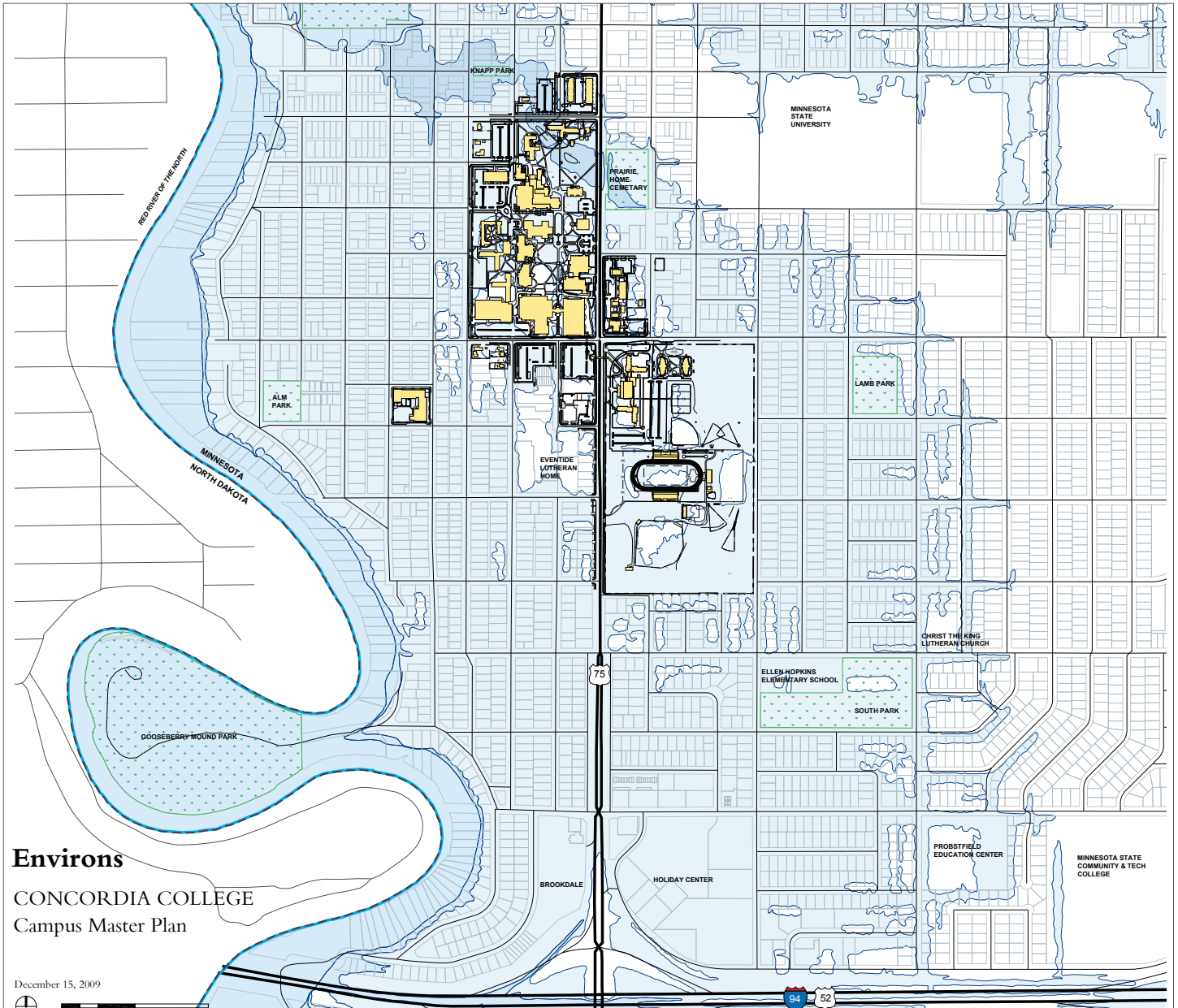
ASYLUM AVENUE

BUCKINGHAM LANE

OFT ROAD

Concordia College Moorhead, MN

Campus Master Plan



Concordia College sought to support and advance its mission and strategic initiatives by guiding near-term improvements through the next decade and setting the direction for sustainable long-term campus development.

EYP's planning process engaged campus constituents to draw upon the experiences and understanding of a wide range of participants including students, faculty, staff, administrators, and the College's Regents. A space inventory database, detailing the space available and subsequently the space needed for the future, and site analysis drawings were used to inform discussions, clarify needs, and generate proposals for alternative solutions.



Study for New School of Business

The master plan advances the excellence of Concordia's programs and responds to the evolving needs of its students within a strategic framework for sustainable design and development.

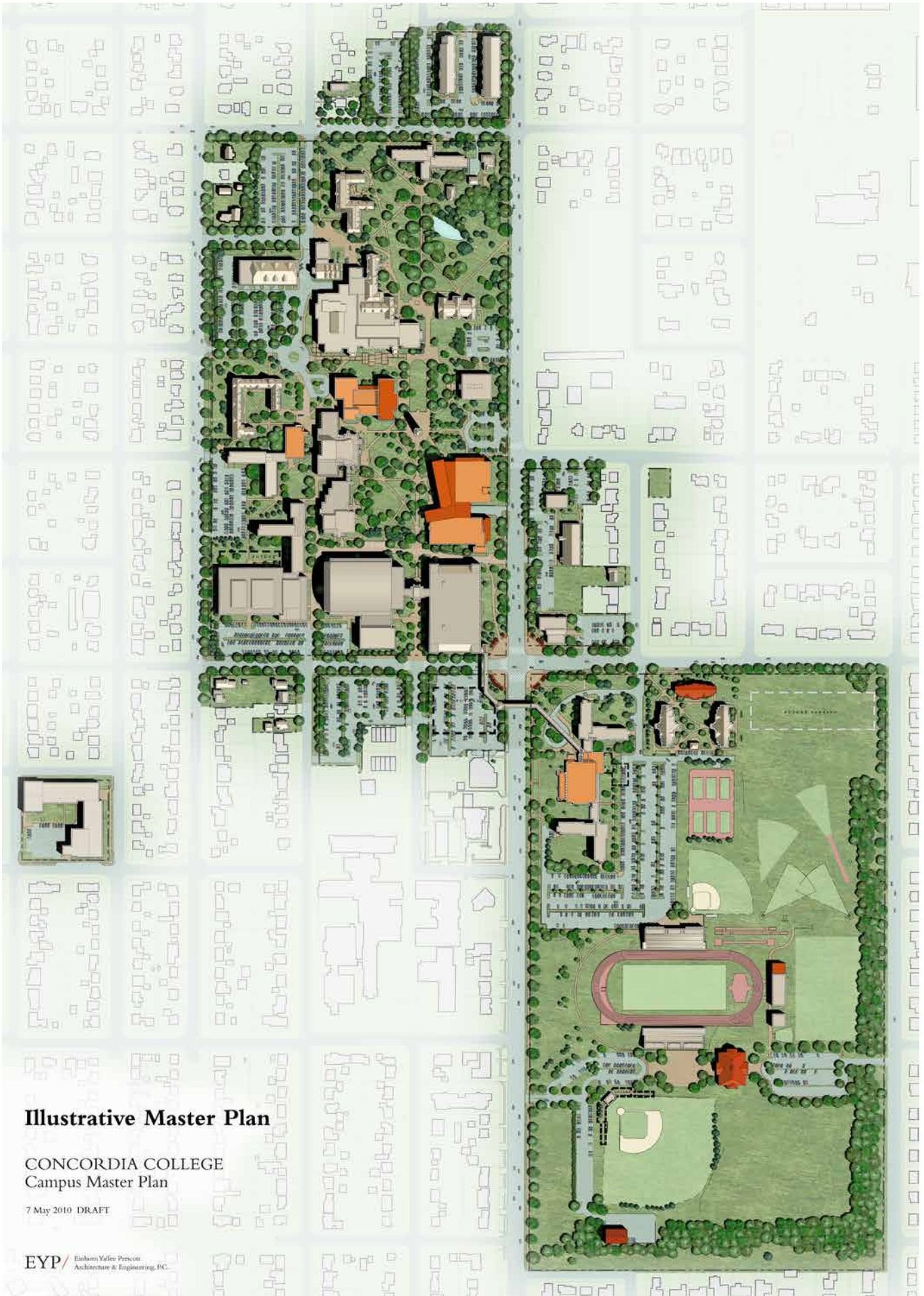
- Founded: 1891
- Enrollment: 2,800
- No. Buildings: 45
- GSF: 1,448,587
- Acreage: 113



Arrival Plaza Location



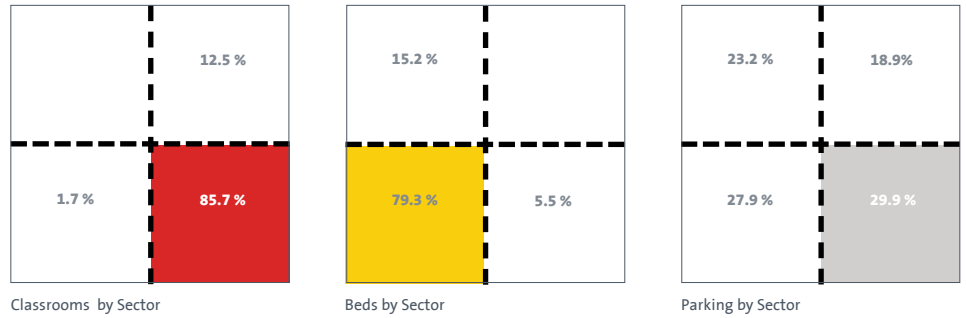
Proposed Landscape Themes



Illustrative Master Plan

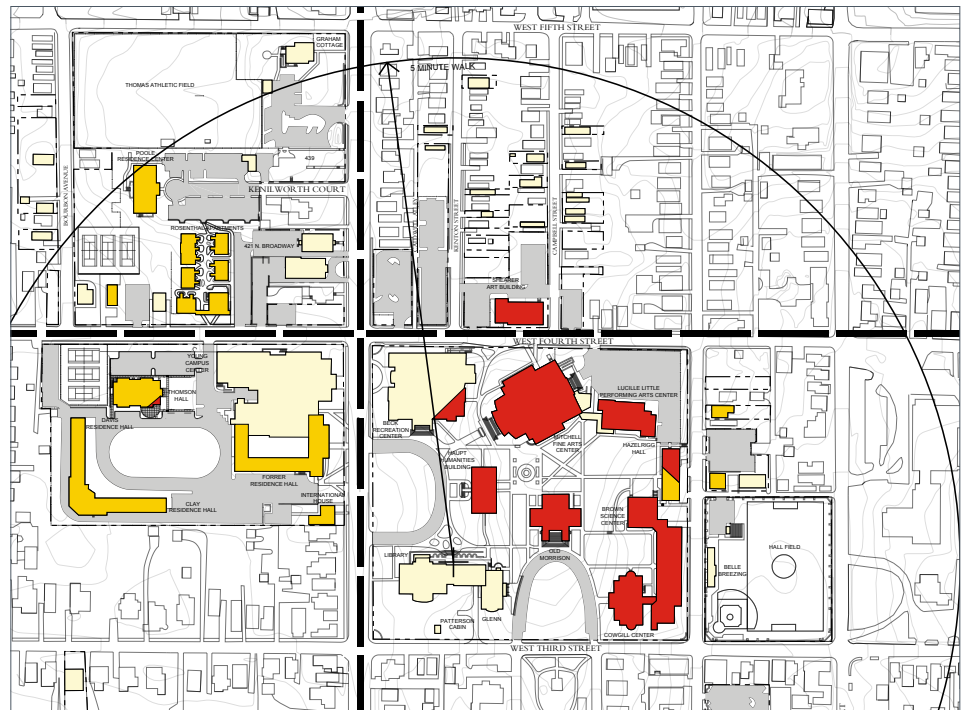
CONCORDIA COLLEGE
Campus Master Plan

7 May 2010 DRAFT



The 2010 Campus Master Plan Update for Transylvania University anticipated rising initiatives at an opportune juncture when most of the capital improvements advanced by the plan of 2002 had been realized.

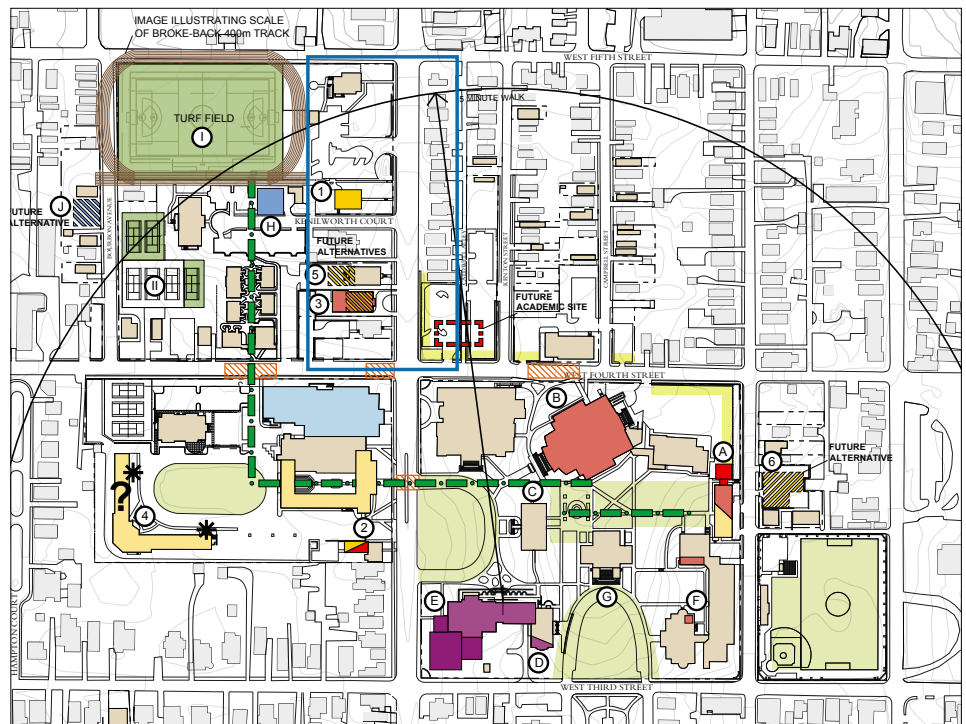
The President and the executive leadership team met with the EYP team to outline the objectives of the study and confirm current conditions and oncoming challenges to be addressed. Baseline statistics were updated to reflect the evolution of conditions on campus since the prior study. Capital initiatives were identified for implementation in three general phases: Preparation – projects for immediate relief or for staging a focus project; Action – completion of a focus project; and Next Opportunity – the listing of any improvements enabled by the completion of the focus project.



Update Analysis

The plan update complements the University's recently completed strategic plan and provides Transylvania with clear vision for near-term improvements while recommitting and elevating the University's efforts for responsible environmental stewardship.

- Founded: 1780
- Enrollment: 1,100
- No. Buildings: 35
- GSF: 821,110
- Acreage: 39 main campus



Plan Concept

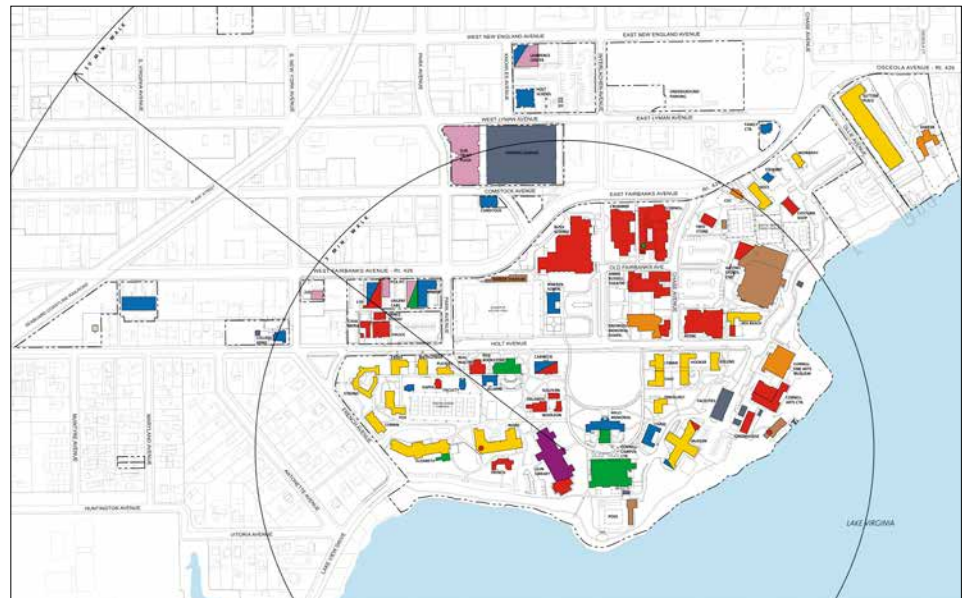


Having attained its 125th year, Rollins College positions itself as a leader in sustainability and advances liberal arts-based education in a global context. The 2011 campus master plan update focuses on a ten-year horizon of continuing development to maintain enrollments and respond to evolving program requirements. Campus buildings designed in the Mediterranean revival style are complemented by a lush tropical landscape in a lakefront setting. The human scale of the campus is a distinctive and highly valued aspect of the Rollins experience, as are the College's active integration and outreach ventures within the City of Winter Park.

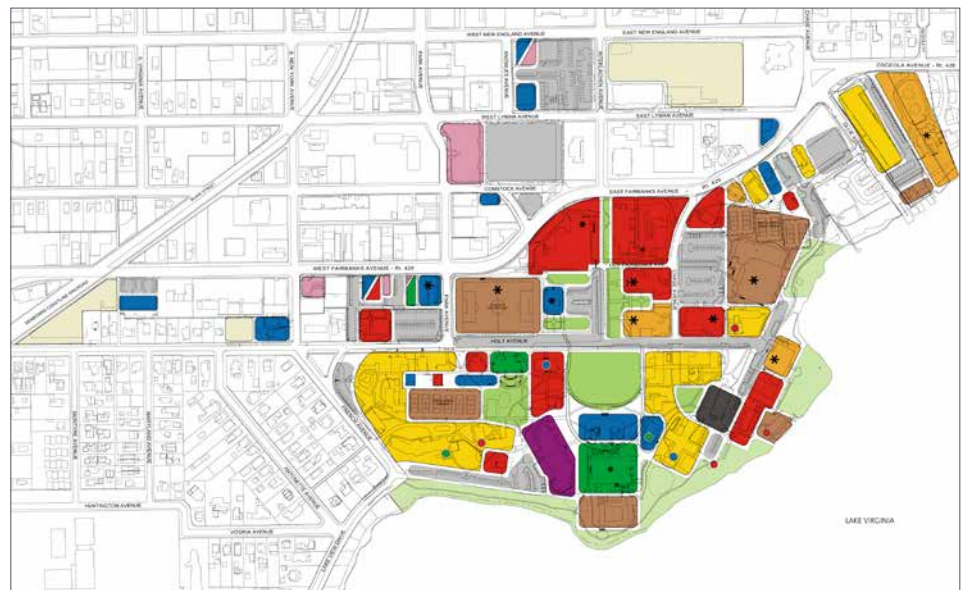
EYP assisted the College in defining building requirements and identifying optimal sites for construction and landscape improvements. Planning encompassed site analyses and design studies; a building energy survey; a space inventory database; instructional space utilization analyses; collaboration with local planning agencies; and facility programming. EYP also worked with the College's Committee on Environmental and Sustainability to refine campus sustainability goals and principles.

The update plan proposals build on the unique character and heritage of the College, improve facility utilization, and integrate green strategies for development and continuing innovation. This continuum plan sustains the trajectory for the College to achieve its bicentennial potential.

- Founded: 1885
- Enrollment: 3,100
- No. Buildings: 70+
- GSF: 1,187,152
- Acreage: 79



Predominant Building Use



Land use



Issues and opportunities



Existing condition



Proposed Illustrative plan

/ capabilities

Architecture

- Design
- Planning
- Programming
- Interior Design
- Life Safety
- Environmental Graphic Design
- Workplace Strategy & Design
- Master Planning

Energy

- Energy Data Analysis
 - Energy modeling
 - Benchmarking
- DSM Programs for Utilities
- Building Performance Optimization
 - Energy Audits
 - Energy Master Plans
 - Retro-commissioning

Engineering

- Electrical
- Fire Protection
- Mechanical
- Plumbing
- Security
- Structural
- Telecommunications

Software

- B3 Benchmarking
- NEO Net Energy Optimizer®
- Custom tools with WeidtSim®

Consulting

- Graphic Design
- Marketing Communications
- Public Relations

/ higher education master planning clients

Adelphi University
Assumption College
Ball State University
Black Hills State University
Boston College
Brandeis University
Cabrini College
Chatham University
Clinton Community College
Colgate University
Columbia University Medical Center
Concordia College
Dominican College
Franklin College
Gallaudet University
Gateway University Research Park
Harvard University
Johns Hopkins University
Marist College
Mercy College
Middlebury College
Montgomery College
Mohawk Valley Community College
Morocco University of Science & Technology
Muskingum University
New Jersey City University
New York university
Orange County Community College
Rochester Institute of Technology
Rockhurst University
Roger Williams University
Skidmore College
Siena College
Spring Hill College
St. Joseph's College of Maine
St. Joseph College (CT)
SUNY Polytechnic Institute
SUNY University at Albany
Swarthmore College
The Catholic University of America
The College of New Jersey
The College of St. Elizabeth
The Sage Colleges
Transylvania University
Trinity College
United World College
University Heights
University of Iowa
University of New Haven
University of Southern Maine
University of Texas Southwest Medical School
University of Vermont
University of Wisconsin
Virginia Tech
Worcester Polytechnic Institute

EYP/®

eypae.com

design for your people, your purpose, our planet