

CHILDREN'S HEALTH





ABOUT EYP

We're an integrated design firm specializing in higher education, government, healthcare, and science & technology. We begin every project by asking:

What's Possible?

Let's shake the box, stretch your dreams, unpack ideas, and envision design in the context of something bigger. Because:

We're Curious Too.

About you, where you're going, and what you imagine. Striving to create an environment of partnership and trust, we want to meet your needs and then go beyond what's expected. Bringing intuition and intellect to a creative process to uncover the possible in your project, let's push past the impossible and ask:

What Can Design Do To...

- Serve our Fellow Citizens?
- Enhance Campus Culture?
- Provide Better Patient Care?
- Support Research and Development?



CHILDREN'S HEALTH

Powered by Imagination.
Reimagining the Future of Children's
Healthcare Design.



MASTER PLANNING & IMPLEMENTATION

For over 40 years, EYP has partnered with mission-driven healthcare institutions — from large, not-for-profit hospitals and academic medical centers to community-based systems — to help each client develop a strategic plan that advances its vision and supports future growth. The perspective we gain from exploring your unique goals, needs, and resources in relation to the evolving healthcare landscape, market competition, demographics, security, and sustainability enables us to identify and evaluate your most beneficial alternatives.



WOLFSON CHILDREN'S HOSPITAL



CHILDREN'S HEALTH, DALLAS



PALMETTO HEALTH CHILDREN'S HOSPITAL



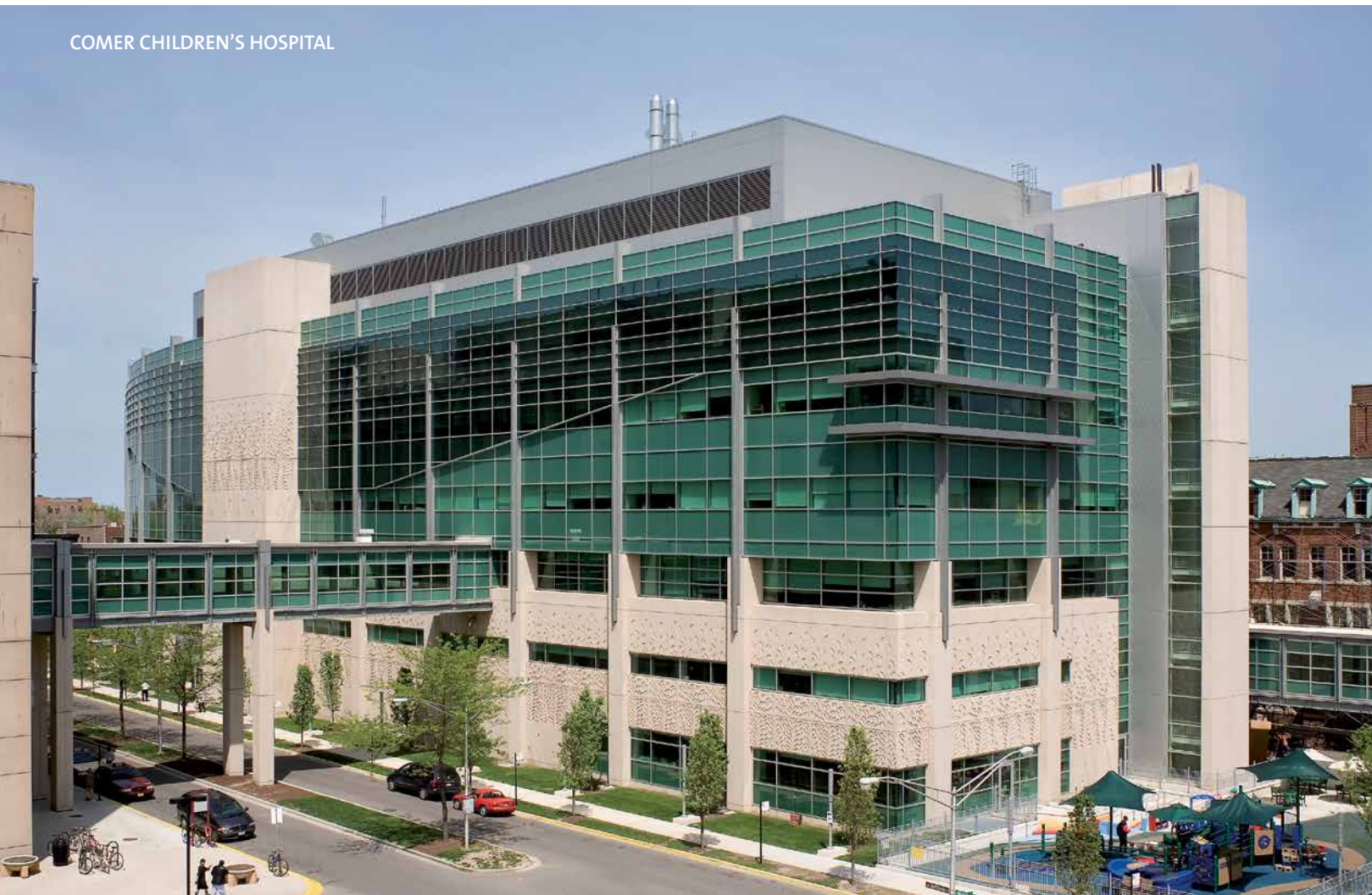
KENNEDY KRIEGER INSTITUTE



REUTER CHILDREN'S OUTPATIENT CENTER



BRENNER CHILDREN'S HOSPITAL



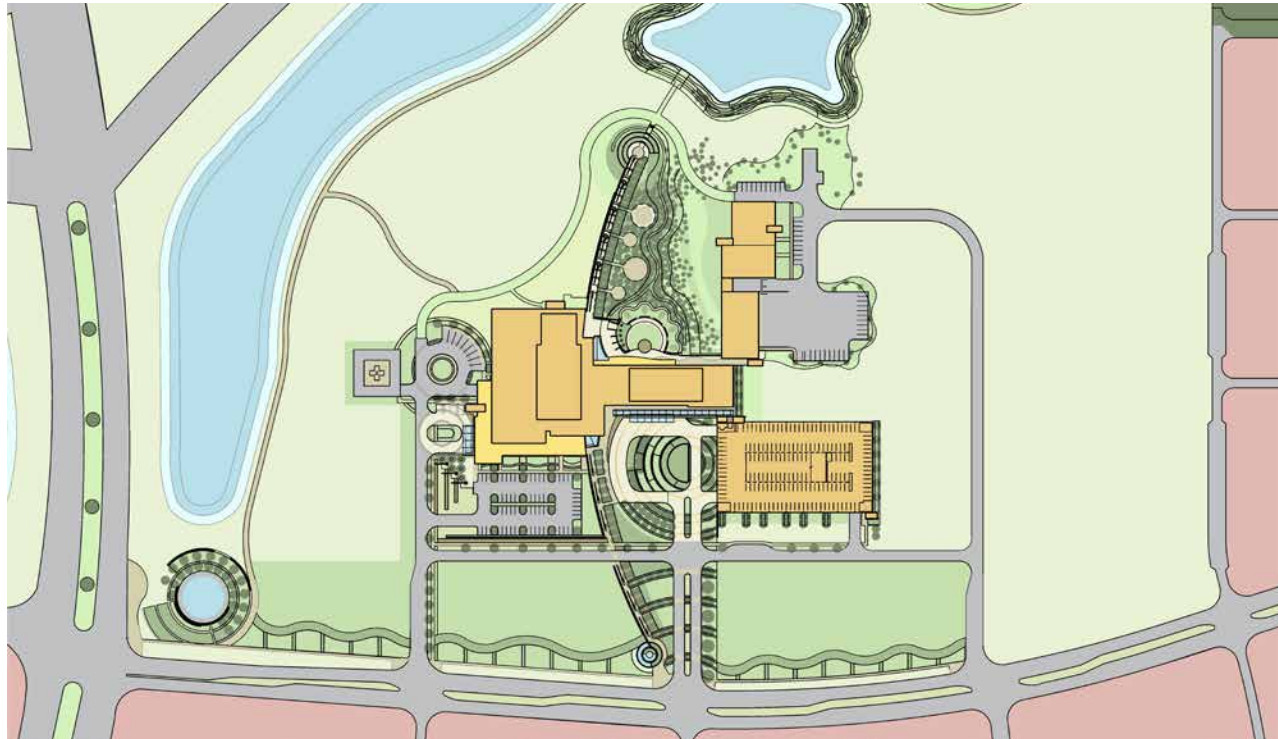
COMER CHILDREN'S HOSPITAL



NEMOURS CHILDREN'S HOSPITAL

“We are extremely proud to be recognized as one of the nation’s leaders in sustainability and green building... we can now spend less money on energy and more on our first priority: patient care.”

Roger Oxendale, CEO of Nemours Children's Hospital



- Top: Phase I

Bottom: Phase III

Relevance: Flexible future growth opportunities for inpatient and outpatient care areas, multi-phase comprehensive master plan
- | | | | |
|----|-----------------------------|----|--------------------------|
| A: | Inpatient Hospital Phase I | H: | Education/Conference |
| B: | Inpatient Hospital Phase II | I: | Emergency |
| C: | Outpatient Clinic Phase I | J: | Medical Office Building |
| D: | Outpatient Clinic Phase II | K: | Research |
| E: | 600 Car Parking Deck | L: | Child Development Center |
| F: | Central Energy Plant | | |
| G: | Ronald McDonald House | | |

NEMOURS CHILDREN’S HEALTH SYSTEM

Master Planning and Nemours Healthcare Campus, Orlando, FL



At a Glance

- 630,000 GSF New Construction
- 95 beds
- 60-acre site
- LEED Gold certified

Nemours Children’s Hospital brings a full spectrum of what’s possible in pediatric healthcare to Central Florida. Featuring the area’s only emergency department designed especially for children, the new facility offers patients care with everything from life’s little mishaps to big emergencies and long-term needs.

What can design do to create a unique healing environment and connect with the community? Nemours Children’s Hospital hums with world-class medical technology, state-of-the-art equipment, and a family-focused environment.

Nemours' family-friendly design houses the ambulatory and acute care spaces for medical specialties in adjacent wings of the same floor with shared waiting spaces. Whether hospitalized or visiting a clinic, children see the same physicians and clinical staff. Familiar faces and continuity of care reassure both patients and parents.

Nemours' playrooms harness the healing power of play. During their stay, children discover interactive water features, explore the one-acre garden, or catch a performance at the outdoor community stage.

There's also a teaching kitchen. Here, children take the lead in learning how to cook healthy and simple recipes. The space is an educational resource for the community, supporting events like the American Heart Association's Heart Health Day.

And the rest of the family? After gathering in family lounges, they'll find private patient rooms designed with home-like overnight accommodations for two. There are laundry facilities and concierge stations.

As good neighbors, Nemours Children's Hospital is also one of three Florida children's hospitals to achieve LEED Gold certification. Its sustainable environment is based on green design and construction features that positively impact the broader community.

Offering the best possible care, featuring sustainable design, and harnessing the power of play — can you imagine the healing that happens at Nemours?



“Our goal for Nemours Children's Hospital was always about the children. We made decisions that also kept parents and staff in mind, but patients were always number one. We wanted children to love it.”

Veronique Pryor, AIA, LEED AP, senior project manager, principal



CHILDREN’S HEALTHCARE OF ATLANTA

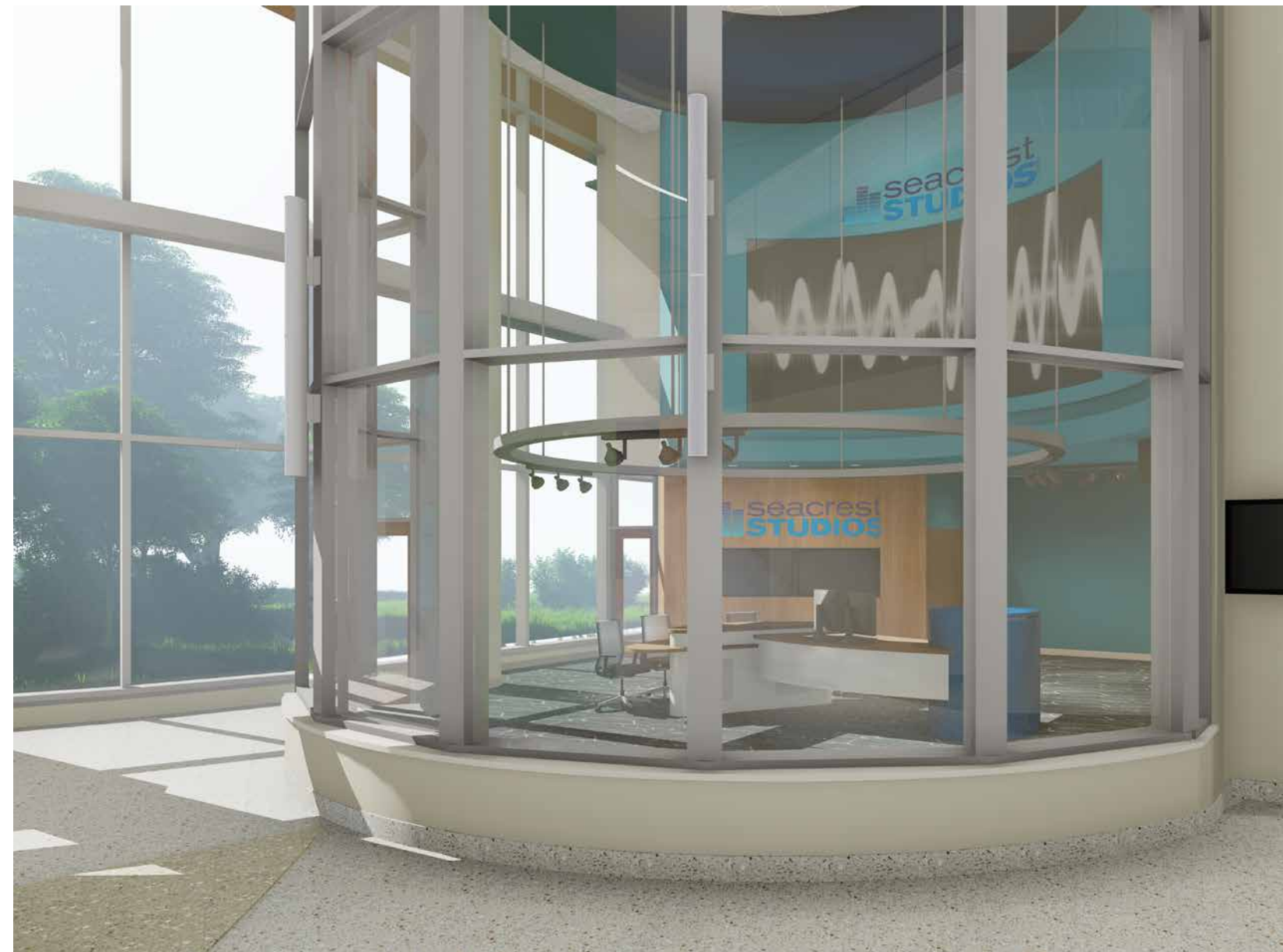
North Druid Hills Campus, Atlanta, GA



At a Glance

- 1.4 million SF
- 446-Bed
- Medical Office Building
- Support Building
- Parking
- in association with ESa Architects

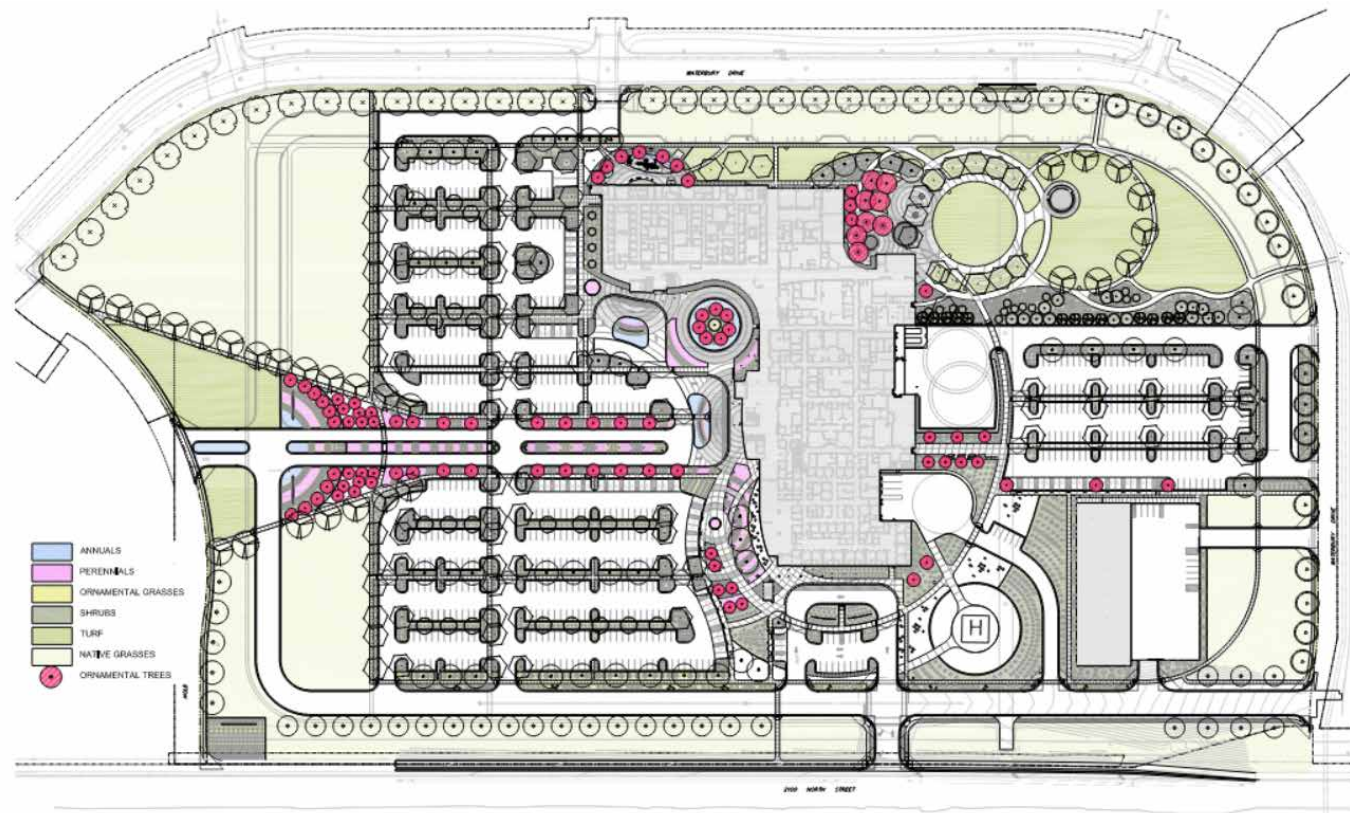
Following the system’s health and wellness philosophy, the campus Masterplan is focused on preserving land and optimizing views of nature and the surrounding area. Beginning with the arrival sequence and preserving land for exterior gardens, Children’s Healthcare of Atlanta has placed a priority on a design solution that creates both a healing environment and a healthy workplace. Organization of the site, building orientation, access and wayfinding further support these principles. This project, planned to see new patients in 2025, includes the new 20-story, 446-bed North Druid Hills Hospital, an attached 12-story medical office building and dedicated Central Utility Plant.





INTERMOUNTAIN HEALTHCARE

Primary Children's Hospital Utah County Campus, Salt Lake City, UT



At a Glance

- 66-Beds Hospital with Pediatric Trauma Center
- Medical Office Building
- 483,000 SF
- in association with VCBO Architects

The new Hospital at Intermountain's Lehi Campus is a bold expansion of the Intermountain network of care in a fast-growing region of the country. The design process employed Intermountain's lean methodology and advanced the organization's construction and brand standards. The active engagement of physicians, caregivers and patients ensures an environment that is not only functional and efficient, but one that supports children and their families throughout their healthcare visit.

The new hospital includes family and child amenities, diagnostic services, pediatric emergency care, inpatient units, pediatric intensive care, neonatal intensive care and behavioral health. The campus also includes a three-story ambulatory care center housing a range of pediatric specialties. Situated on 38 acres adjacent to a residential neighborhood, the site and building design puts a priority on community-based care and includes attributes that focus on patient and staff wellness.



**POWERED BY
IMAGINATION**



MODERNIZATION & EXPANSION

How do you get the benefits of a new building without building new?
An integrated modernization approach that unlocks the potential of your existing building.



KENNEDY KRIEGER INSTITUTE



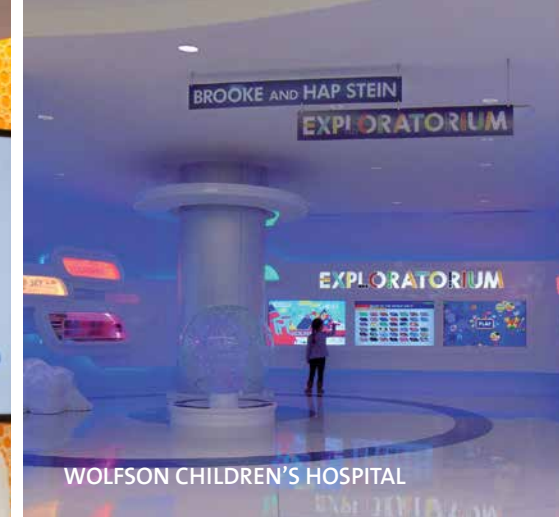
NADIA'S ROOM

“The changes here are significant:
They are fast, they are fun, and we
believe they are impactful.”

John Nickens, President & CEO, Children's Hospital of New Orleans



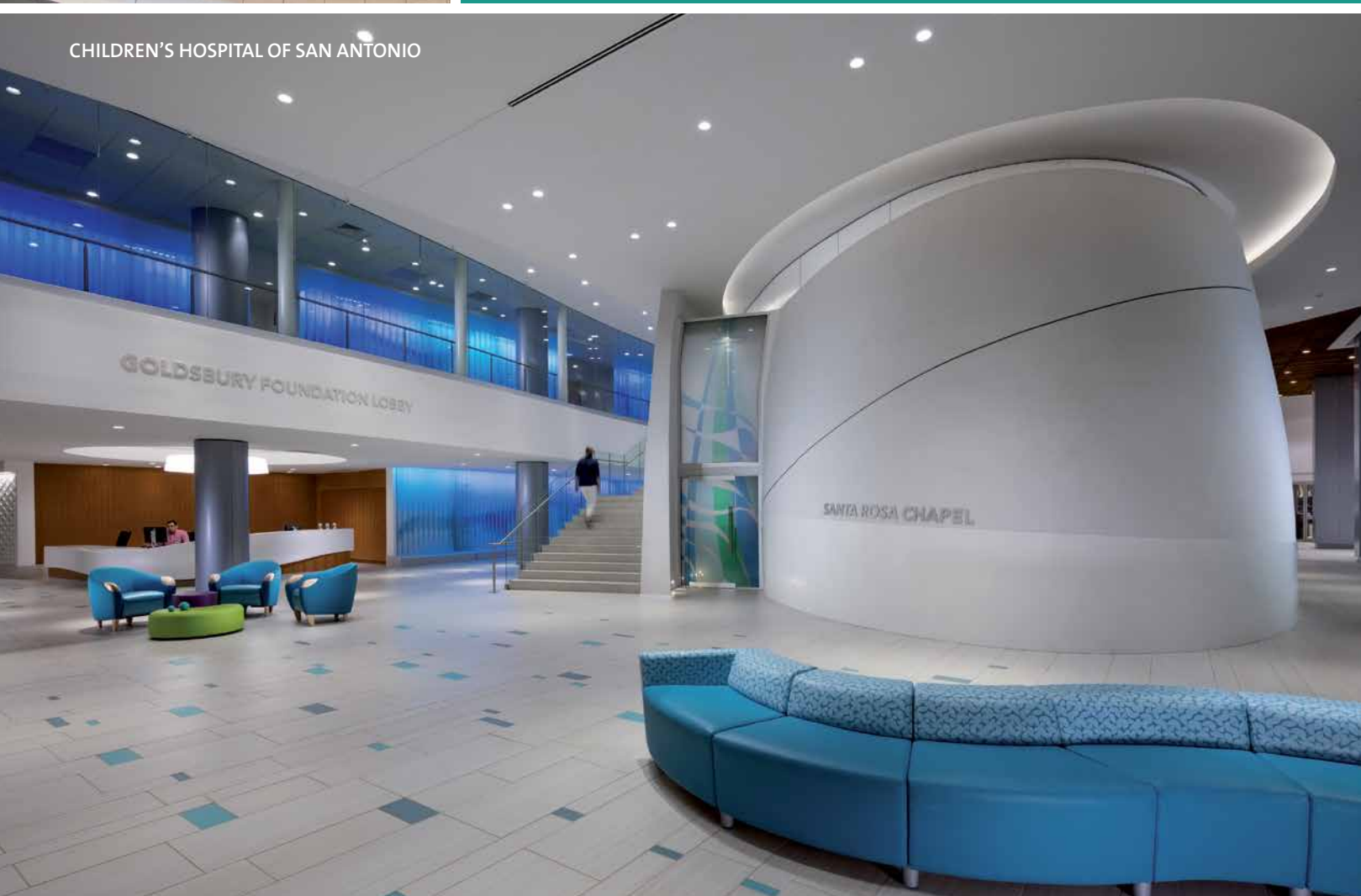
NEMOURS CHILDREN'S HOSPITAL



WOLFSON CHILDREN'S HOSPITAL



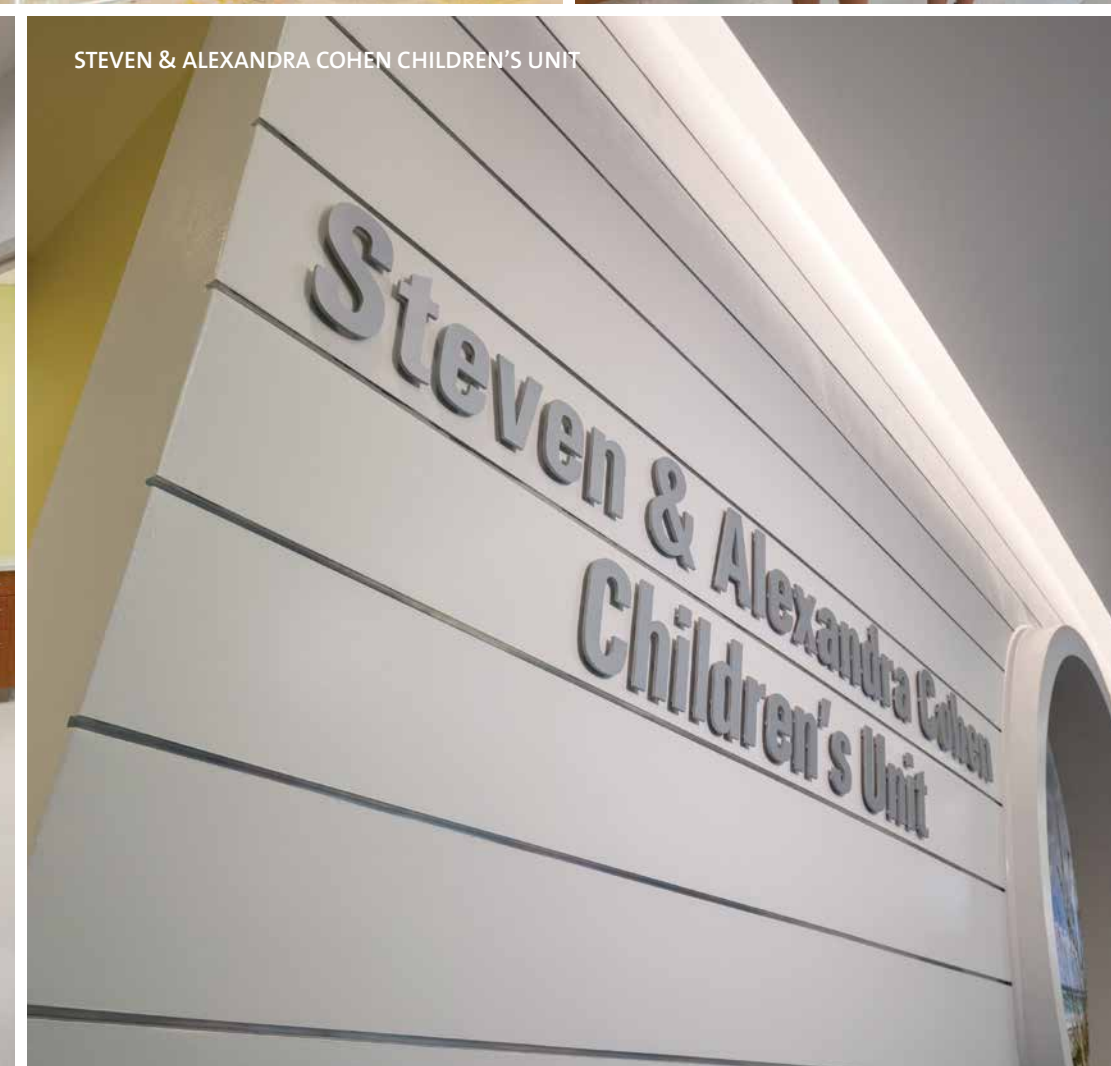
CHILDREN'S HEALTHCARE OF ATLANTA
EGLESTON CAMPUS



CHILDREN'S HOSPITAL OF SAN ANTONIO



UNIVERSITY OF LOUISVILLE



STEVEN & ALEXANDRA COHEN CHILDREN'S UNIT

LCMC HEALTH

Children's Hospital of New Orleans, New Orleans, LA



After a decade in the making, the Children's Hospital of New Orleans partnered with EYP to help realize a vision of transforming the state's go-to children's facility into a fully modernized comprehensive pediatric health campus. This phased renovation and addition will increase the hospital's footprint by over 235,000 square feet.

So, how do you modernize Louisiana's largest freestanding pediatric hospital while maintaining its critical operations? With lots of creativity and coordination.

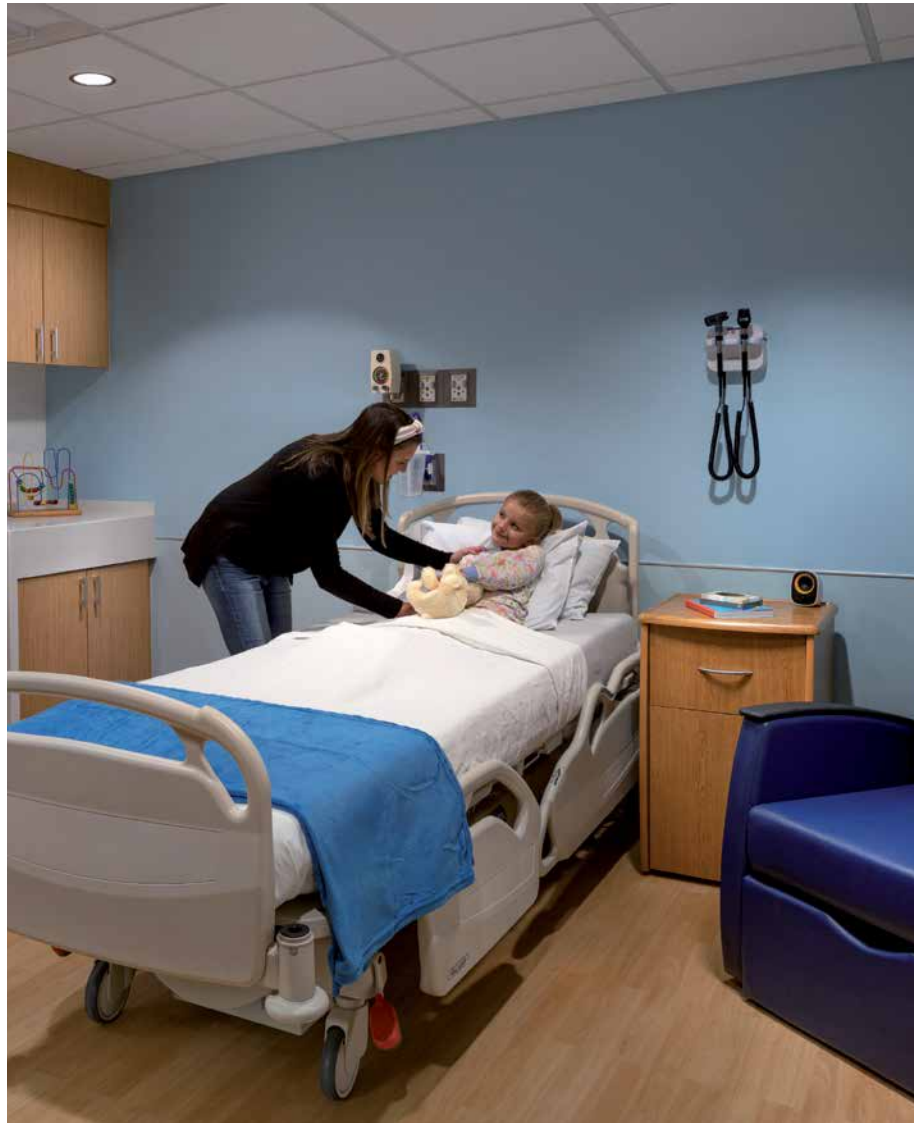
Like a well-played chess match, EYP developed a clear and rigorous 34-phase plan to keep the Children's Hospital of New Orleans in continuous operation. The approach required innovative scheduling, a heightened focus on safety, progressive wayfinding, and extensive communication with the hospital, contractor, and community.

At a Glance

- 238 Beds
- 34 Distinct Construction Phases
- 7-Year Modernization/Construction Project without Disrupting Everyday Operations
- 400,000 SF Expansion and Modernization
- Master Planning, Programming, Architecture, Interior Design, Environmental Graphic Design, and Furniture Selection
- New Pavilion, Systems, and Clinical and Practice Spaces

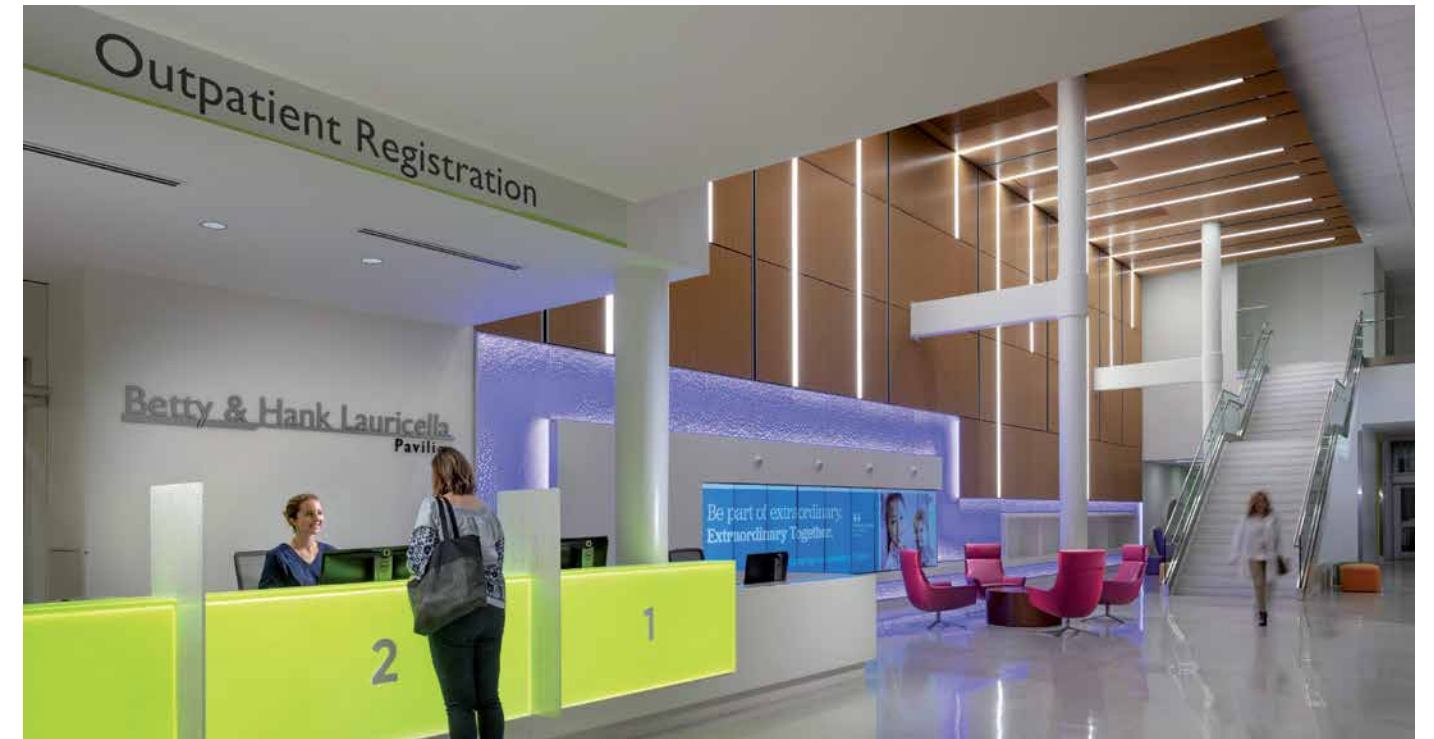
As you drive through the local neighborhoods and New Orleans's historic district, you're greeted by CHNOLA's newly renovated front entrance. After parking and crossing the glass-enclosed sky bridge, families can enjoy the two-story Lauricella Pavilion. CHNOLA's new "living room," the Pavilion is designed to welcome patients by offering interactive game stations and even noise-reducing acoustics to comfort those with special needs. The two-story lobby has become a family room for the community. The colorful lights, digital signage, artwork, and activities energize the staff, patients, families, and city. Reducing anxiety and encouraging creativity, the Pavilion sets the stage for young patients' healing and well-being.

And what's next for CHNOLA? A four-story tower that will expand their multi-specialty programs and services, supporting their mission to "shape a healthier, happier future for kids."



"We are energized every day by different aspects of the project, from the progress of the construction, the excitement of the Users, and the smiles from the patients."

Jennifer Wilkinson, Project Architect, Construction Administration



BAPTIST HEALTH

J. Wayne & Delores Barr Weaver Tower at Wolfson Children's Hospital, Jacksonville, FL



An expansive new building enables the only full-service, tertiary pediatric hospital serving South Georgia, North Florida and the Florida Panhandle to better meet the needs of its rapidly growing regional population. The design strengthens connectivity with nature to create a pleasant and calming atmosphere that research demonstrates can positively influence patient outcomes.

At a Glance

- 300,000 GSF
- 11 stories
- 216 beds
- Intraoperative MRI/CT suites
- Behavioral Health
- Cardiovascular Care
- Hematology/Oncology
- Neurology & Neuroscience
- Environmental Graphic Design

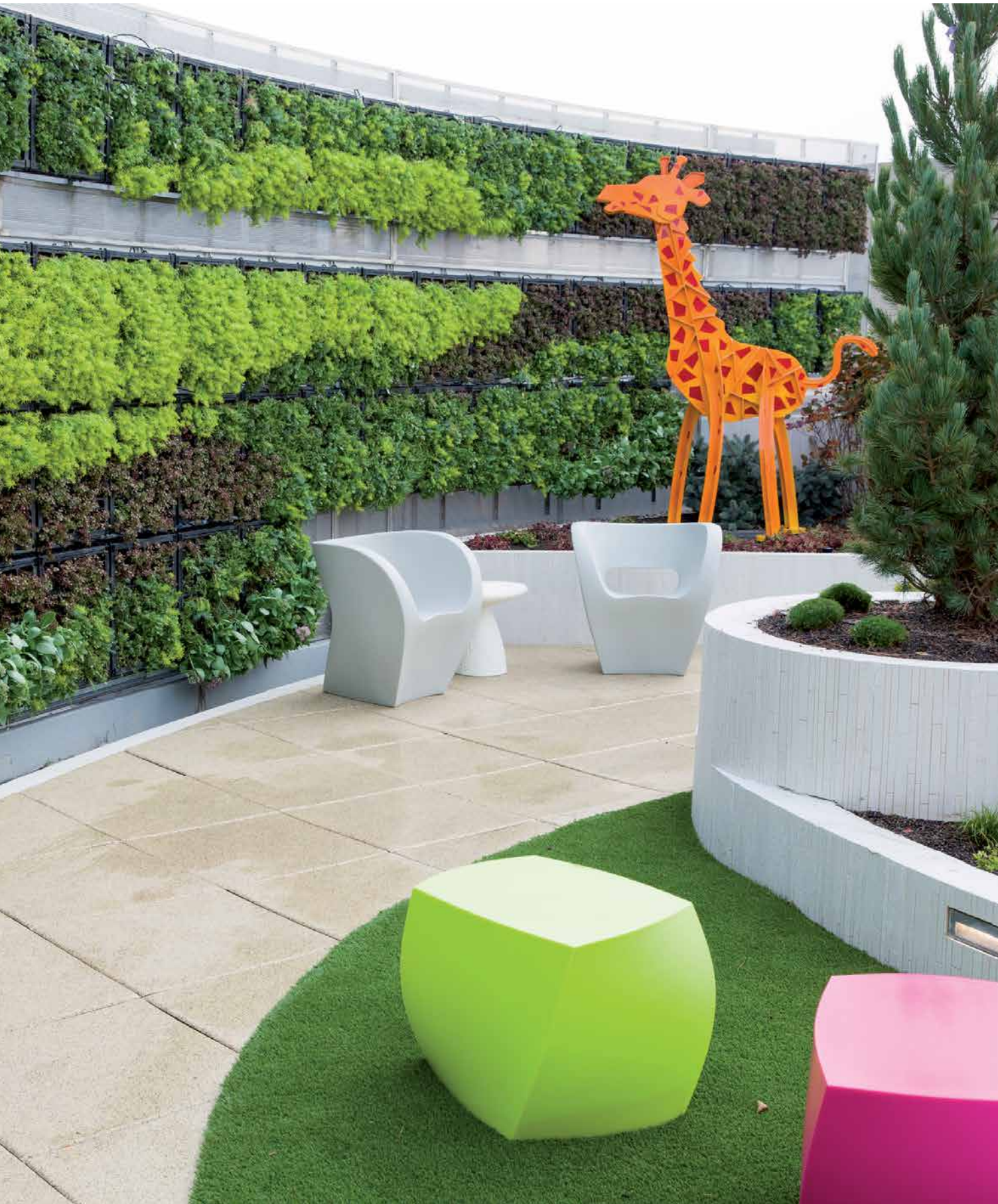
The lower levels of the tower house specialized spaces including pediatric cardiovascular intensive care; intraoperative MRI and CT scan surgical suites; a new pediatric behavioral health unit; and the Baptist Neuroscience Institute for children and adults.

At 300 SF, patient rooms are nearly twice as large as those in the client's existing facilities, comfortably accommodating families in home-like settings whose child-focused designs feature unique animal themes. Exterior horizontal sunscreens along the south-facing curtainwall help manage glare and solar gain, decreasing building load to save energy. The building offers spectacular views of the St. Johns River.



UNIVERSITY HOSPITALS OF CLEVELAND

Angie Fowler Adolescent & Young Adult Cancer Institute, Cleveland, OH



Nationally renowned Rainbow Babies & Children's Hospital now offers adolescent and young adult cancer patients an innovative outpatient experience that meets their distinctive treatment and social needs. Our team worked closely with medical staff, patients, families, and the Fowler family – the donor in whose daughter's memory the Institute was named – to create an innovative environment that has proven effective both in treating patients and in attracting top cancer researchers and physicians.

At a Glance

- 18,500 GSF modernization
- 7,500 GSF rooftop garden
- Exam/treatment rooms
- Consultation spaces
- Pharmacy
- Environmental graphic design

The design transforms the eighth floor of Rainbow Babies & Children's Hospital into a "journey of light and healing" through various zones of interaction. Patients follow the 60-foot-long illuminated "welcome wall" from the lobby to one of two treatment wings and a decentralized-care team station adjacent to treatment and examination rooms. Possible stops along the way include waiting areas, consultation and meeting rooms and a pharmacy, as well as a teen lounge where patients can hang out together or retreat on their own.



A GUARDIAN ANGEL FOR THE COMMUNITY

CHRISTUS HEALTH

The Children's Hospital of San Antonio, San Antonio, TX



Transformational design reinvents an adult and pediatric facility as a family-friendly children's hospital – the first in the region dedicated solely to pediatric care. From neonatal intensive care to state-of-the-art cancer treatments, Children's Hospital of San Antonio provides innovative care specifically designed to meet children's needs.

At a Glance

- 400,000 GSF Modernization
- 10,000 GSF New Construction
- 195 Beds
- 8 different room configurations: two each for the NICU, PICU, and typical inpatient rooms; and one apiece for labor, delivery, recovery, and oncology rooms

“It was an art form:
living in your
hospital as you’re
rebuilding it.”

Dr. Mark Gilger, pediatrician-in-
chief at CHOSA

A guardian angel for the community, Children’s Hospital of San Antonio’s exterior showcases Jesse Trevino’s historic mural, “The Spirit of Healing,” where an angel watches over a child and signals your arrival. The mural and playful exterior, re-clad in multicolored ceramic tile, work together with inviting landscapes that incorporate prayer and kitchen gardens to breathe new life into the renovated hospital.

In harmony with the mural, the “Spirit of the River” feature wall is reminiscent of San Antonio’s River Walk, setting a tranquil mood and guiding visitors to a bright new lobby with gathering spaces surrounding a whirlpool-inspired chapel. Color-changing LEDs slowly drift from greens, blues, and purples, creating a “living, breathing river” that not only acts as wayfinding but celebrates CHRISTUS’ missionary legacy.

Playful displays entertain children on their way to the Child Life Center, which features classrooms, teen lounges, and teaching kitchens. Here, kids might catch a ride in little red wagons to outpatient clinic appointments or snuggle up in reading nooks.

“On-stage” and “off-stage” circulation separates clinical care and public spaces to enhance security and operational efficiencies, reduce noise, and provide staff amenities. Every element works together to support Children’s Hospital’s values of dignity, integrity, excellence, compassion, and stewardship.



ST. JUDE CHILDREN’S RESEARCH HOSPITAL

Kay Research and Care Center, Memphis, TN



ROOM FOR
IMAGINATION



At a Glance

- 90,000 GSF modernization
- 3 floors
- Immersive “Imagine Room”
- Environmental Graphic Design

Inventive and engaging, the modernized facility complements world-class pediatric care with magic and whimsy to create a holistic healing experience. Immersive experiential design sparks children’s imagination, distracting them from the stress of their lengthy hospital stays by inspiring and supporting play.

Each of the three renovated floors houses a unit of 17 family suites with home-like rooms for parents and patients. To encourage children to get out of their rooms and socialize with others, corridors feature interactive shadow boxes and “Discovery Walls,” whose flat-panel LCD displays are programmed for gestural interactive play. Each floor offers a unique experience – Nature’s Orchestra, Discover the Sea, and Explore Space – whose theme is richly realized through environmental graphics, custom interactive games, and every aspect of the interior design. The design reimagines the 50-foot-long corridors as interactive “Journey Walls” with LED curtains and immersive audiovisual systems.





**WHEN WE
INVEST IN
THE HEALTH
& WELLNESS
OF CHILDREN,
ANYTHING IS
POSSIBLE.**



AMBULATORY CARE

As population health increases the need for outpatient services, hospitals are expanding beyond inpatient facilities to enhance healthcare delivery.



KENNEDY KRIEGER INSTITUTE



NEMOURS CHILDREN'S HOSPITAL



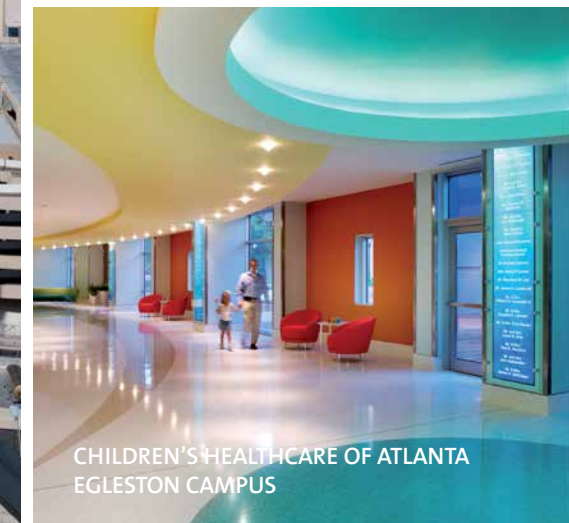
BAPTIST MEDICAL CENTER WOLFSON CHILDREN'S HOSPITAL



BAPTIST MEDICAL CENTER WOLFSON CHILDREN'S HOSPITAL



CHILDREN'S HOSPITAL NEW ORLEANS



CHILDREN'S HEALTHCARE OF ATLANTA
EGGLESTON CAMPUS



FULTON COUNTY



COMER CHILDREN'S HOSPITAL

“Walking into Children’s Center for Advanced Pediatrics, my granddaughter Kennedy, was wide-eyed at the openness, and for once, did not feel boxed-in like other doctor offices. She felt very at home in her surroundings.”

Marian Kelly, Atlanta, GA

NURTURE THROUGH NATURE



CHILDREN'S HEALTHCARE OF ATLANTA

Center for Advanced Pediatrics, Atlanta, GA



From specifically trained doctors and nurses to colorful, friendly waiting rooms, everything at Children's Healthcare of Atlanta is designed expressly for kids.

What's possible from the moment a child arrives at the Center for Advanced Pediatrics? The best care and the best experience! The adventure begins with a step through the waterfall.

At a Glance

- 275,345 GSF New Construction
- 250-rooms for patient care
- 20 pediatric specialties
- 5.63 acres
- 7-level above grade parking deck serves the building
- LEED Gold

After passing through cheerful gardens, patients, families, and visitors are greeted by two stair towers.

Representing the earthen edges of a waterfall, the towers frame a blue-glass curtainwall with curved mullions, playfully replicating the random way water moves down the falls. As day becomes night, LED fixtures in the horizontal fins light the vertical tower elements, using colors and patterns to transform the stairs.

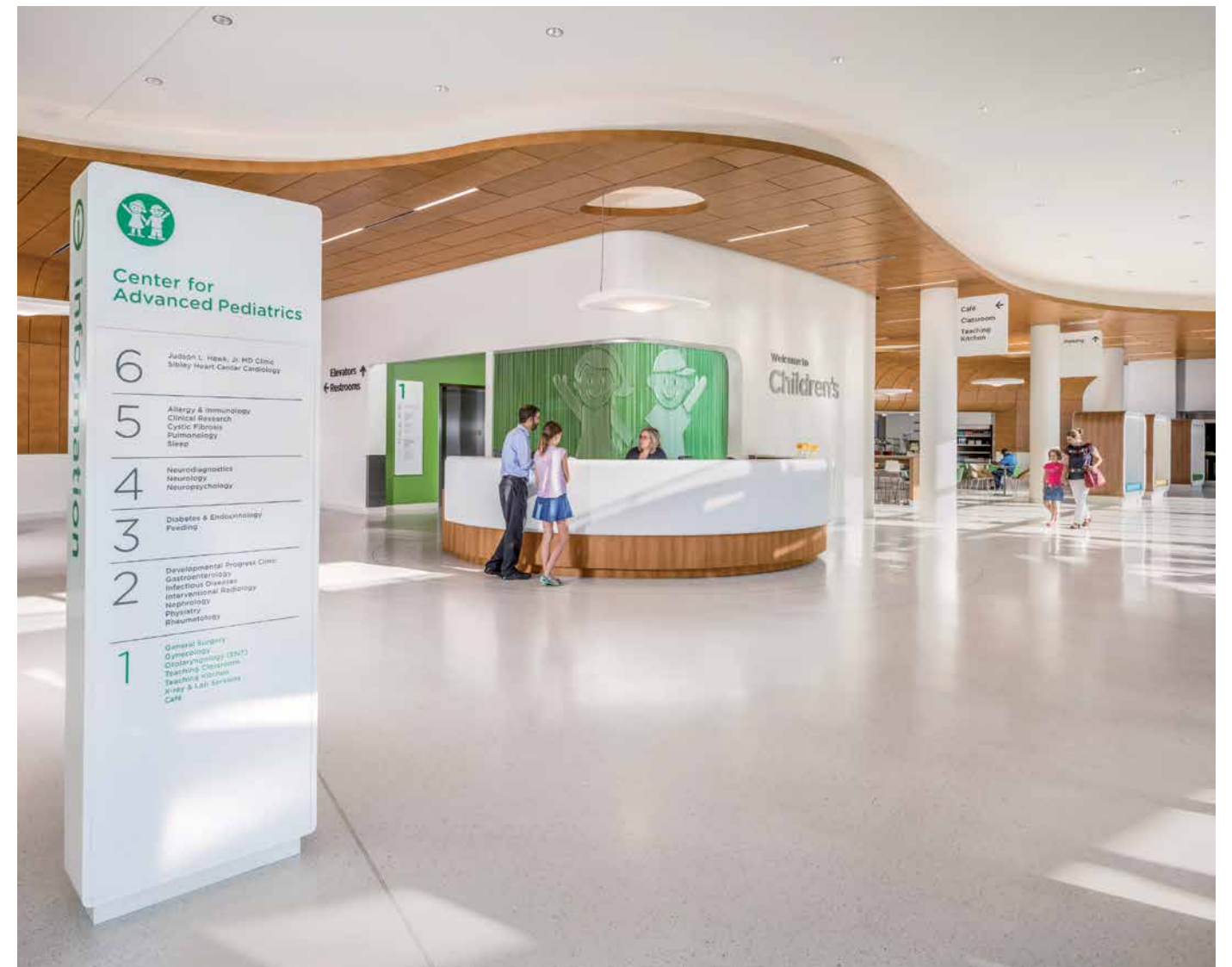
Entering the building, expansive windows offer ample daylight and views to the garden. A wood wall and textured ceiling panels curve to create an abstract, whimsical tree canopy that assists with wayfinding as you move through check-in and into the waiting area. Pops of color emphasize destinations, and color and imagery make for a soothing patient experience in the exam rooms. Open ceilings and curious finishes enliven the top two administrative floors to complete the healing experience for patients, families, and clinicians.

When it comes to pediatric care, first impressions matter. EYP's Nurture through Nature approach to design blurs the lines between the outdoors and indoors, creating a playful, kids-first atmosphere and setting the tone for this healing environment.



“I was inspired by the stories shared by the patients and families to deliver a magical holistic healing environment that would encourage and comfort them throughout their journey.”

Robin Kirkman, senior interior designer



UNIVERSITY OF LOUISVILLE

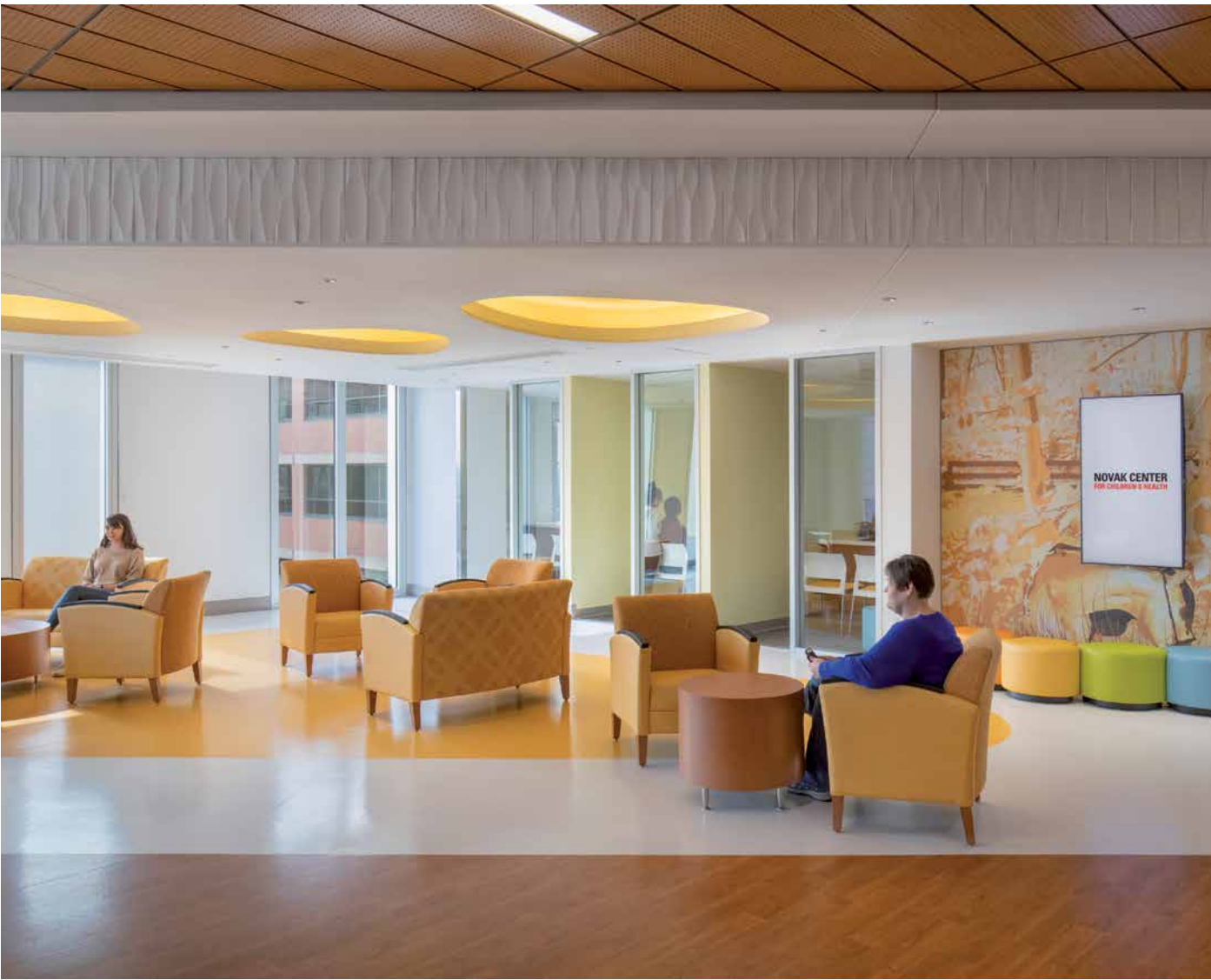
Pediatric Medical Office Building, Novak Center, Louisville, KY

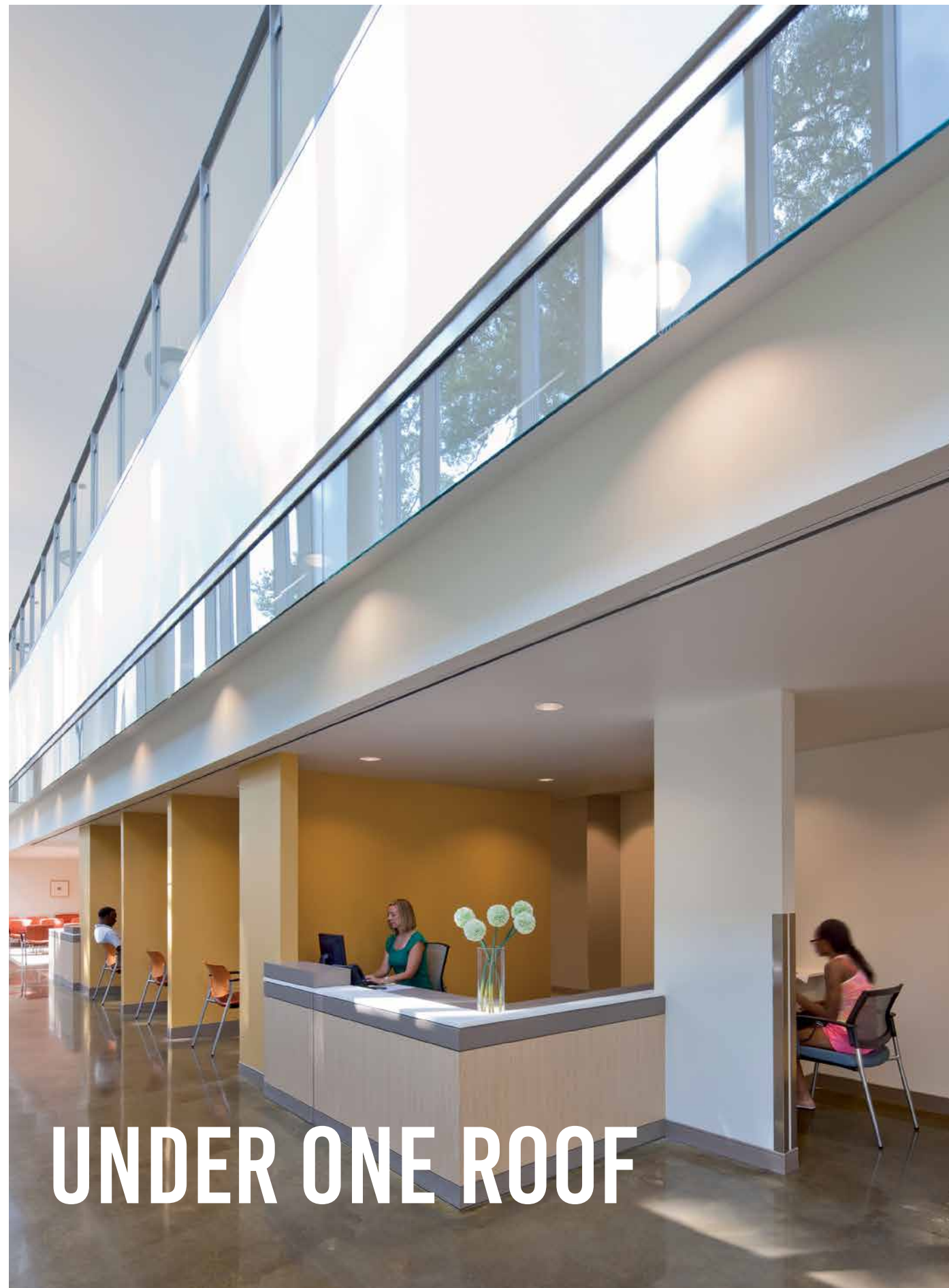


At a Glance

- 174,000 SF
- 8 stories
- 180 Exam and Treatment rooms
- 21 Infusion Rooms and a dedicated Infusion Pharmacy
- Diagnostic Lab
- Radiology
- Retail Pharmacy
- Conference Center

With the goal of having a better way of delivering healthcare to adolescent patients in Kentucky, the University of Louisville Physicians Group sought the services of GBBN and EYP to develop a comprehensive medical office building. The Novak Center for Children’s Health stands eight stories high with over 250,000 square feet of new space. The building is home to seven clinical levels, lab and radiology services, a conference center, and a rooftop garden. Every element of the building— from the playful accent colors on each floor designed to reinforce wayfinding to the coordinating spirit animals allowing for children to feel at ease when entering an unfamiliar space—was chosen with care. The new center provides a place for children to feel safe and secure while receiving care during difficult times. A notable feature are the co-working spaces, which allow diverse individuals to come together and share resources and ideas. They are characterized by open floor plans filled with flexible and easy to rearrange furniture.





FULTON COUNTY

Adamsville Regional Health Center, Atlanta, GA



This holistic wellness center addresses the healthcare and social needs of an economically challenged, predominantly African-American population in an urban neighborhood on Atlanta's west side. Prominently sited at the intersection of Interstates 20 and 285, the building borders Martin Luther King Jr. Drive, a major arterial thoroughfare, and is easily accessible by car, public transportation, or on foot.

At a Glance

- 36,000 GSF
- LEED certified

By collocating a primary care clinic, behavioral health clinic, childcare facilities, a dental clinic, and workforce community center under one roof, the design makes visits convenient and economical for patients. The spatial organization, anchored by a central, two-story lobby and connecting stair, clearly guides visitors to the facility's various departments.





CLIENT LIST

Nemours/Alfred I Dupont Hospital for Children
Advocate Children's Hospital
Advocate Christ Medical Center
AFLAC Cancer Center at Egleston
Augusta University, Children's Hospital of Georgia
Baptist Medical Center Wolfson Children's Hospital
Bradley Children's Hospital
Children's Healthcare of Atlanta - Scottish Rite
Children's Healthcare of Atlanta - Egleston
Children's Healthcare of Atlanta - North Druid Hills Campus
Children's Hospital of New Orleans
Children's Hospital of Philadelphia
Children's Hospital of San Antonio
Children's Medical Center, Charlotte
Children's Medical Center of Dallas
Hasbro Children's Hospital
Intermountain Healthcare
Joe DiMaggio Children's Hospital
Kennedy Krieger Institute
Mayo Clinic/Rochester - Children's Clinic
Medical University of South Carolina Pediatric Emergency
Mission Hospitals Reuter Children's Outpatient Center
Nemours Children's Hospital
Nicklaus Children's Hospital
OSF/Children's Hospital of Illinois
Palmetto Health Children's Hospital
Ronald McDonald House Charities
Shawnee Mission Health B. E. Smith Children's Pavilion
St. Jude Children's Research Hospital
Stamford Health
Texas Children's Hospital
The University of Iowa Children's Hospital
University Hospitals Rainbow Babies Children's Hospital
University of Chicago Hospitals Comer Children's Hospital
University of Louisville Novak Center
University of Virginia Battle Building Outpatient Center
University of Virginia Hospitals Children's Master Plan
Wake Forest University Brenner Children's Hospital



REIMAGINING THE FUTURE OF CHILDREN'S HEALTHCARE DESIGN

WHAT'S POSSIBLE?

eypae.com

EYP

