

Healthcare

EYP/

/ healthcare

The architects and engineers of EYP are united by purpose – to help clients reimagine healthcare delivery and transform the patient experience. Our evidence-based design approach keeps the focus on people, balancing the needs of patients, staff, and families with the requirements of evolving standards and rapid advances in research and medical technology. With 15 offices across the United States and in Europe, we offer local teams you know and trust, backed by a deep bench of recognized experts in comprehensive high-performance design.

EYP brings decades of experience integrating building technology, functional efficiency, and aesthetics for both public and private partners. We understand the fiscal and construction issues presented by complex, large-scale projects. We balance critical thinking with empathy to create inspiring, efficient, and cost-effective environments that promote health, inspire confidence, and enhance well-being for patients, staff, and visitors.

Disciplines

Architecture, Engineering, Energy, Environmental Graphic Design, Interior Design, Master Planning, Medical Planning

Expertise

- Academic Medical Centers
- Acute Care
- Ambulatory Care
- Behavioral Health
- Cancer Care
- Cardiovascular Specialty Hospitals
- Children's Health
- Community Hospitals
- Critical Care
- Emergency & Trauma
- Inpatient & Outpatient Surgery
- Orthopedic Care
- Teaching Hospitals
- Women's Services

Research

EYP seeks out opportunities for research investigations to advance designs that optimize the patient, visitor, and staff experience while maximizing value for owners. As the leader in innovation through evidence-based design, we helped found – and continue to collaborate with – the Center for Health Design (CHD) and the CHD Pebble Project. Our thought leaders continually grow the body of information available to facility users and architects through publications and active participation in organizations including the International Academy for Design and Health, the Society of Critical Care Medicine, and the Robert Wood Johnson Foundation.

Recognition

#10 in Healthcare Design — *Giants 300, Building Design + Construction*

Contact

Charles Griffin, FAIA, FACHA, EDAC - Healthcare Sector Leader
713 852 3649 / cgriffin@eypae.com

Kimberly Stanley, AIA - Children's Health Specialist
404 524 2200 / kstanley@eypae.com

Jennifer Conrad, EDAC - Director of Business Development, Healthcare
214 276 6979 / jconrad@eypae.com



Clockwise from top left:
 Stamford Hospital
 Nemours Children's Hospital
 Ocean Medical Center
 Stamford Hospital
 Children's Healthcare of Atlanta
 Children's Medical Center of Dallas



Acute Care Hospitals



/ Texas Medical Center Houston, TX

New Construction, Renovations, Expansions & Master Plans





The Texas Medical Center (TMC) is the largest medical center in the world with one of the highest densities of clinical facilities for patient care, basic science, and translational research.

Located in Houston, the TMC comprises 50 medicine-related institutions, including 15 hospitals, two specialty institutions, two medical schools, and four nursing schools, as well as schools of dentistry, public health, pharmacy, and other health-related practices.

The total land area of the TMC is 1,345 acres — or 2.1 square miles — and it is estimated that the daytime “population” of the TMC is approximately 160,000 people.

EYP has designed over 11 million square feet for institutions in the TMC — more than any other architecture firm.

Notable Projects Designed by EYP in the TMC

Baylor College of Medicine

A Specialty Care Center
200,000 SF build-out

Houston Methodist

B Research Institute
440,000 SF

C North Campus Expansion
960,000 SF

D Outpatient Center
1,600,000 sf

Memorial Hermann

E The Institute for Rehabilitation & Research (TIRR)
100,000 SF

F Hermann Pavilion 1 (HP1)
850,000 SF

G Hermann Pavilion 2 (HP2)
1,340,000 SF

H Ambulatory Care Center Sports Institute
55,000 SF

Prairie View A&M University

I College of Nursing
545,000 SF

Texas Children’s Hospital

J 8080 North Stadium Drive
18,500 SF

K Critical Care Center
9,612 SF

UT MD Anderson Cancer Center

L Mid Campus Building 1 (1MC)
1,400,000 SF

M Mid-Campus Garage
1,000,000 SF

N Faculty Center
325,000 SF

UTHealth

O Research Park Complex
485,000 SF / 4 Building Complex

P Medical School Expansion
200,000 SF

/ Stamford Hospital Stamford, CT
New Hospital Pavilion



Showcasing Stamford's commitment to the Planetree philosophy of patient-centered care, the new pavilion elevates the healthcare experience of patients, visitors and staff. The new pavilion brings together invasive and non-invasive heart services – including 10 high-tech operating rooms and an expanded 24-bed ICU – for the Heart & Vascular Institute. The 11-story building, equipped with the latest technologies is connected via skyway to the new Integrated Care Pavilion.

The building program includes a 43,800 SF emergency department (ED) with 40 treatment areas to support the 65,000 annual patient visits. Specialized spaces include two triage rooms; six fast-track rooms; 16 urgent-care rooms; four cardiac rooms; eight rooms dedicated to pediatric care; and four trauma rooms, including one fitted out for pediatrics. In addition, the ED is designed to flex up and down to facilitate efficient operations between pediatrics and urgent care. The ED also includes two general radiology rooms and one CT dedicated solely to emergency patients, as well as a four-bay behavioral health holding area and a detox room.

The pavilion is designed to accommodate 180 all-private rooms, with three decentralized nursing units to facilitate greater flexibility in the delivery of patient care.

- 647,000 GSF new construction
- 235-bed capacity
- Architecture, Planning, Programming, Interior Design





/ UNC Rex Healthcare Raleigh, NC
North Carolina Heart & Vascular Hospital



The North Carolina Heart & Vascular Hospital project comprises an eight-story bed tower with adjacent four-story diagnostic and treatment building connected to the northwest quadrant of the existing hospital.

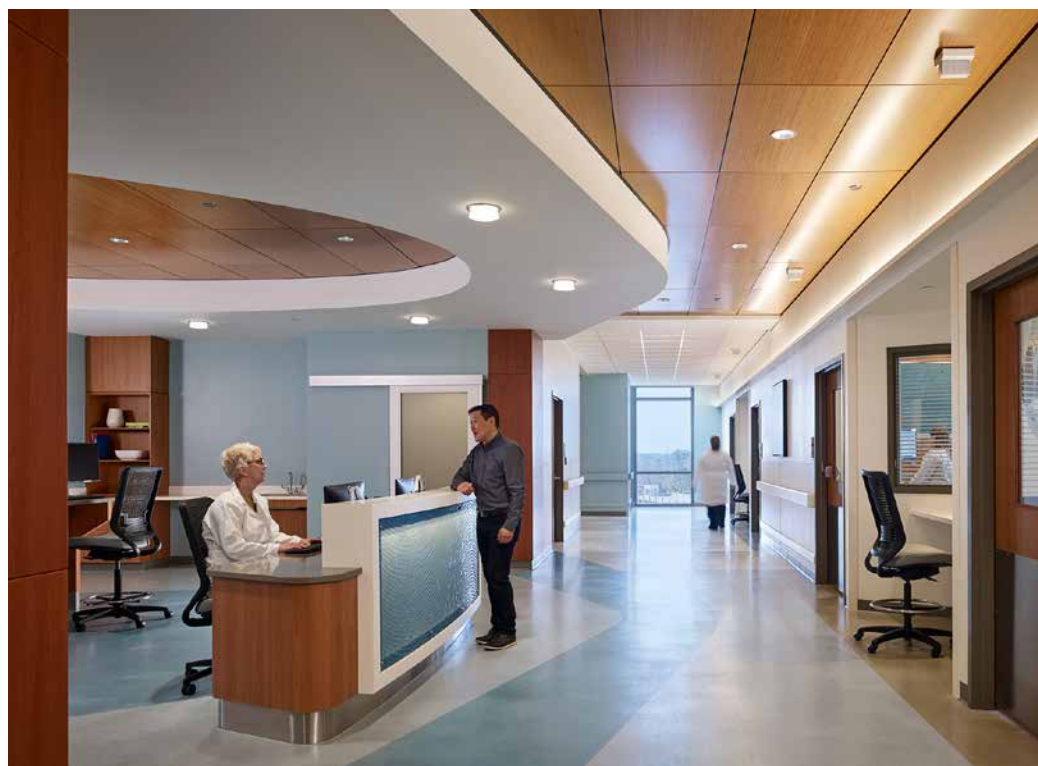
The Heart & Vascular Hospital will have 114 licensed beds, including 72 step-down/telemetry beds, a 20-bed cardiovascular intensive care unit (CVICU), and 22 acuity-adaptable beds.

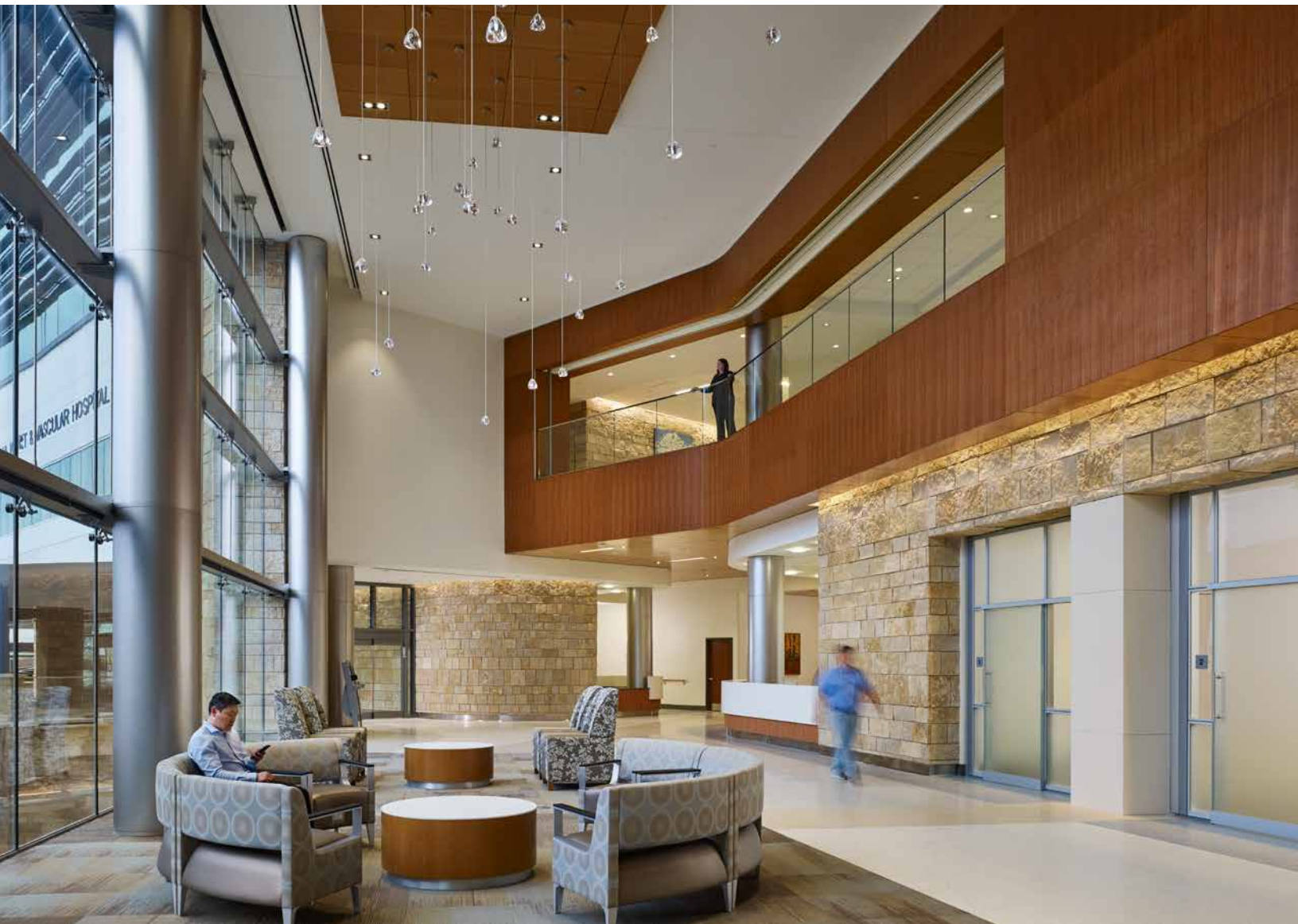
Diagnostic and treatment procedure spaces will include 6 catheterization labs, 2 electrophysiology labs, 2 interventional radiology labs, 1 hybrid OR, 1 hybrid cath, a 10-bed PACU, and a 40-bed prep/recovery unit with 8 observation beds.

This project also includes a non-invasive cardiology clinic, simulation lab, inpatient pharmacy, outpatient pharmacy, and inpatient dialysis care.

Public spaces include a café and a conference center.

- 306,402 GSF new construction
- 3,480 SF renovation to existing facilities
- Architecture, Programming, Planning, Design, and Construction Administration







NORTH CAROLINA HEART & VASCULAR HOSPITAL

NORTH CAROLINA HEART & VASCULAR HOSPITAL

/ North Oaks Medical Center Hammond, LA



The North Oaks Medical Center recently completed a creatively-conceived expansion project, seeking to address the growing healthcare needs of its community in a region characterized by declining health statistics. In a community that often equates “hospital” with “illness”, they sought to encourage more preventative health habits by “demystifying” the hospital – offering creative education programs, convenient outpatient care and facilities that enhance the patient experience.

The 80-acre campus has been largely re-designed, incorporating plazas and generous landscaping where none existed before. New facilities, totaling 250,000 SF, offer wide expanses of glass, hotel-like interiors and a cool, clean, welcoming exterior appearance. Currently a 300-bed regional hospital, the North Oaks Medical Center has chosen to serve the Florida Parishes of Louisiana with a clearly progressive philosophy of care – aimed at building a healthier community.

- 200,000 SF Hospital
- 45,000 SF Medical Office Building
- Master Planning, Programming, Exterior Design, Interior Design, Furniture Selection



/ Houston Methodist Hospital
Texas Medical Center, Houston, TX
North Campus Expansion



This new patient tower in the Texas Medical Center will replace patient beds in Houston Methodist Hospital's original Main building and add highly advanced heart and neurosurgery operating rooms.

The inpatient tower, which will be located next to Houston Methodist Hospital, will have capacity for 366 beds (including 102 intensive care beds), expanded operating

suites, hybrid suites, and a dedicated cardiology floor with 14 interventional catheterization labs.

The new high-tech operating rooms will dramatically expand Houston Methodist's ability to provide image-guided heart and brain procedures allowing for minimally invasive treatment of conditions that once required open surgery.

- 957,705 SF new construction
- 366-bed capacity



/ Platte Valley Medical Center Brighton, CO

Community Hospital Campus



The design of the new Community Hospital reinforces Platte Valley's commitment to patient- and family-centered care. Sited on 50 acres, the medical campus offers expansive views of the Rocky Mountains and nearby Barr Lake.

To advance Platte Valley's welcoming "front door" identity, we designed a 360-degree facility with two, equally prominent entrances, rather than offering a "back door" to one side of the community.

The facility includes a Level IV trauma center and expanded heart program, as well as Colorado's first Level II

special-care nursery with eight private rooms – incorporating overnight family accommodations – for at-risk infants.

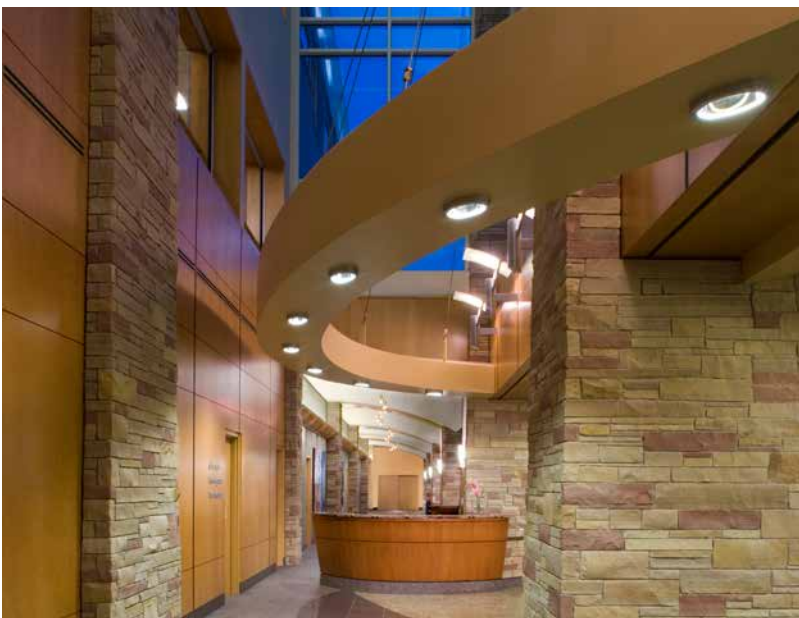
The cost-conscious design utilizes familiar local materials and a color palette inspired by the natural environment. Since its 2007 opening, public interest in employment and/or volunteer opportunities have increased, as has the Hospital's market share in a competitive landscape. Phase 2 added a second Medical Office Building (MOB) to the campus, designed by EYP.

We were Design Architect in collaboration with Fentress Architects as Associate Architect.

- 217,000 SF Hospital
- 250-bed capacity
- 58,238 SF MOB 1
- 68,402 GSF MOB 2
- Architecture, medical planning, operational impact consulting, interior design



H Hospital (2007) **B** Bed Tower (2007) **1** MOB #1 (2007) **2** MOB #2 (2016)



/ New York-Presbyterian Hospital New York, NY

Lower Manhattan Hospital, Level 4, Patient Bed Unit

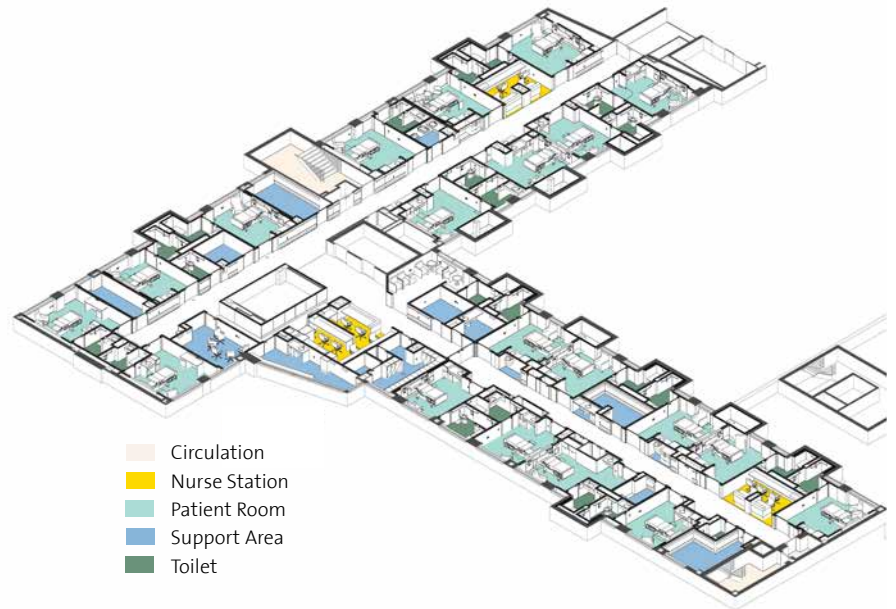
This project was the interior renovation of wings A and B of the 4th floor of New York-Presbyterian's Lower Manhattan Hospital, located on William Street, in order to create a new 20 single-bedroom Medical /Surgical Nursing Unit.

The original building was built in 1953 with only ten-foot floor slab on the underside of floor slab height and inadequate HVAC capacity and distribution. The design team was challenged to create a brand new inpatient nursing unit that embodies the NYP brand and serves as the prototype for renovating additional floors, in a very restrictive and substandard existing building. Additionally, the existing Wings are configured such that a waiver with NYC Department of Buildings was required to allow dead end corridor conditions. Jim Case, Principal in Charge and Senior Medical Planner, developed the strategy for the waiver and obtained the necessary approvals.

By working in very close collaboration with the MEP engineers and the CM, the design team was able to bring HVAC to the floor by converting existing stacked toilets located on the outside walls of the building into vertical shafts. Ceilings were kept at eight feet except in a very few locations where 7'-10" was utilized due to lateral duct transfers.

Window Replacement

All exterior windows on the building were replaced on this floor as part of this project. The windows were carefully selected to not only meet the energy performance needs of a modern building, but also to blend in with existing windows on other floors in terms of mullion locations and color on the exterior so that floors could undergo window replacement in phases over time without creating a mismatched exterior façade.



/ Memorial Hermann Healthcare System Texas Medical Center Houston, TX Memorial Hermann Pavilion 2

Hermann Pavilion 2 is part of a larger \$650 million expansion and modernization of Memorial Hermann's Texas Medical Center campus, home to one of the two Level 1 trauma centers in greater Houston.

The highlight of this master plan implementation is a new, 17-story patient care building that will add 1 million square feet of state-of-the-art spaces for surgery, emergency care, intensive care, and administrative and support services. In addition to replacing 71 existing patient beds, the facility adds 160 new beds, 24 operating rooms, and 16 emergency room bays. A 330-seat café offers patients, families, and staff an attractive respite.

Seven shelled floors provide potential space for adding 264 beds and six operating rooms to accommodate future growth. An additional building will provide a 750-space parking garage and infrastructure capabilities to support the campus expansion.

- 1.3 million SF new construction
- 495-bed capacity
- Architecture, Planning, Programming, Interior Design



/ CHRISTUS St. Frances Cabrini Hospital Alexandria, LA
New Women's and Children's Hospital with
Emergency Department



After our development of a master plan considering long-term growth as well as addressing short-term needs, the expansion of women and children's services and the emergency department were identified priorities.

Taking full advantage of the usable acreage, we also recommended an outdoor mall that unites and connects the campus while improving access.

"A Celebration of Life and Services that Embrace Generations" was the theme for this hospital expansion. The design team worked collaboratively with the staff

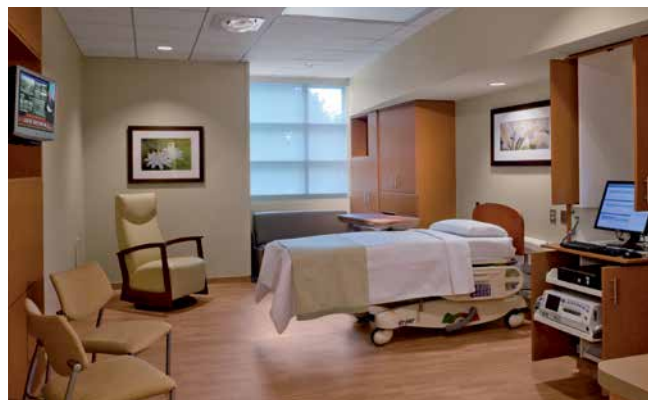
to express this theme throughout the architecture and interior elements. The public and staff areas incorporate natural light, curvilinear forms, healing gardens and regional materials.

Providing a wide-range of services specifically designed for women from adolescents to seniors, they wanted to be the first to offer the most progressive maternity care, uniquely focused on family-centered practices in central Louisiana.

The 188,000 sf four-story tower included a 29,000 sf emergency department; a dedicated women's clinic; a specialty clinic

for pediatrics, including pediatric cardiology, pulmonology, perinatology, and surgery; and a labor/delivery/recovery/post-partum (LDRP) wing; a neo-natal intensive care unit (NICU); and a 10,000 sf pediatric unit.

CHRISTUS St. Frances Cabrini actively embraced sustainable design practices and the implementation of certain sustainable design principles reduced operating costs, enhanced the building's marketability, increased worker productivity and reduced potential liability resulting from indoor air quality problems.



/ Hackensack Meridian Health Neptune, NJ

Jersey Shore University Medical Center Transformation



The modernization and expansion of the Jersey Shore University Medical Center is helping advance the mission of the region's only academic university-level teaching center and clinical research facility.

The centerpiece of the \$300 million project is a new, 144-bed patient care pavilion featuring private rooms and an innovative model of nursing care, as well as a new emergency department and trauma center with the capacity to annually treat more than 100,000 patients. The state-of-the-art diagnostic and treatment building also offers the

latest in diagnostic technology and surgical suites, as well as a new 12-bed cardiac care unit.

The geometry of the dramatic new entrance and curved, four-story atrium are inspired by the geometry of a sail at full mast, referencing the area's coastal heritage. Public spaces including multi-story concourses and healing gardens provide positive distractions, promote social support, and offer patients, families, and staff experiences from education and art and access to nature.

In addition to extensive renovations throughout existing buildings and a new central utility plant, improvements include a new loop road; site development to organize vehicular traffic; and parking garage.

- 433,400 SF
- LEED Gold
- 144-bed capacity
- 975-car garage
- Architecture, Planning, Programming, Interior Design
- Award – Citation of Merit, Healthcare Design



/ Region Hovedstaden Copenhagen, Denmark
Bispebjerg Somatic Hospital



The development of this future-thinking campus will transform the delivery of healthcare for the region's 450,000 citizens. Six towers linked by four connecting galleries within a park-like setting will form the heart of the new campus. An international design competition awarded the project to the consortium of EYP, KHR Arkitekter, and Arup International, Ltd.

Plans for the Hospital include an Emergency Department, Imaging and Surgery Suites, and approximately 600 patient rooms. The overall project involves new construction as well as the preservation and modernization of existing structures. The sustainable design honors its historic site by maximizing daylighting and views to enhance the patient experience.

- 715,855 GSF
- 600 private rooms



/ Missouri Department of
Mental Health Fulton County, MO
Fulton State Hospital



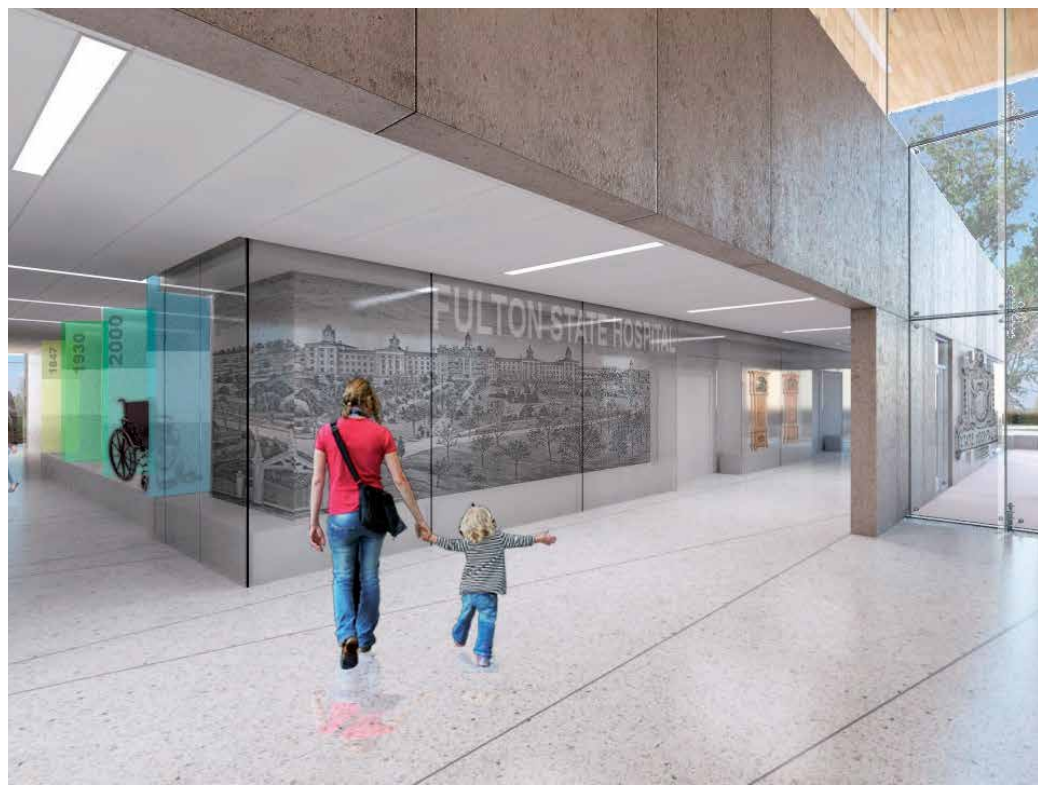
This new, state-of-the-art facility will advance the legacy of Fulton State Hospital, the oldest public mental health facility west of the Mississippi River. The design is informed by a deep understanding of day-to-day operations as well as a strong commitment to recovery-based psychiatric treatment.

The new hospital will replace 300 beds at the Briggs Forensic Center and meet today's highest standards for quality of care and safety. With 275 beds remaining at the Guhleman and Hearnes complexes, the new facility will also provide administrative and support functions for the entire 575-bed campus.

Our design creates 12 living areas with three unique program communities: the Living Area; the Program Communities; and the Treatment Mall also known as the "Hope Center". The program provides three levels of activity and security, based on patient needs, for each of these communities: the Living Area; the Program Communities; and the "Hope Center." The new Fulton State Hospital will be the first facility of its kind in the United States.

To meet the State's aggressive project schedule and ensure continuous campus operations, work will proceed in three phases. The Phase II design includes a new food services area and central plant, while Phase III will provide integrated spaces for treatment, education, residential, administrative, and support functions.

- 500,000 SF new construction
- 300-bed capacity
- Architecture, Programming, Planning, Fire Protection Engineering, Interior Design





Ambulatory Care Facilities



/ Houston Methodist Hospital Texas Medical Center, Houston, TX Outpatient Center



Located on a one-and-a-half block site in the Texas Medical Center, the Outpatient Center (OPC) is designed to fulfill Houston Methodist's vision of elevating patient care to a one-of-a-kind experience. The new facility collocates ambulatory services, clinics, and private physician practices that had been scattered throughout Methodist-owned buildings, as well as in adjacent buildings.

The design team worked closely with the City of Houston to maximize available space on the constrained urban site, which is bisected by a four-lane city street and bounded by two major

thoroughfares. Despite its size, the 1.6 million SF OPC is comfortable and easy-to-navigate – a healing environment that caters to personal preferences, addressing the physical, emotional, and spiritual needs of each patient.

Infused with light, the seascape-inspired interiors and intimate waiting areas foster a serene ambiance. The program supports orthopedic surgery, cardiovascular imaging, radiology, cancer care, weight management, and wellness. On the surgery floors, pre-operative and recovery rooms are oriented to provide outside views.

The 26-story triangular tower, topped by a “tiara” building brow and spire, has transformed the Houston skyline, as well as the outpatient experience. The facility is licensed as a hospital and designed to ensure long-term flexibility for Houston Methodist.

- 1.6M SF new construction
- 1,370-car garage
- Architecture, Planning, Programming, Interior Design



/ Comanche County Memorial Hospital Lawton, OK

Drewry Family Emergency Center

The Drewry Family Emergency Center features nearly 30,000 square feet of new construction, the addition of a rooftop heliport, an onsite state-of-the-art CT scanner, and five new trauma rooms. More than 11,000 square feet of the existing emergency department will also be renovated in a subsequent phase which will open by end of year 2016.

The new Drewry Family Emergency Center features 38 treatment rooms, expanding its original capacity by 50 percent — a welcomed improvement to one of Oklahoma's busiest emergency centers.

- 38 total treatment rooms (including 12 new): 2 triage; 13 minor care; and 23 emergent care (10 general emergent, 5 Level-3 trauma, 4 isolation, 2 behavioral health/psychiatric, 2 OB/GYN)
- On-site dedicated advanced diagnostic imaging to include x-ray; computerized tomography (CT)
- Rooftop heliport landing pad
- Emergency services (EMT) and police workroom
- Family consultation/bereavement room
- Patient viewing room
- Size: 45,728 total SF (new and renovation)



/ Fulton County Atlanta, GA
Adamsville Regional Health Center



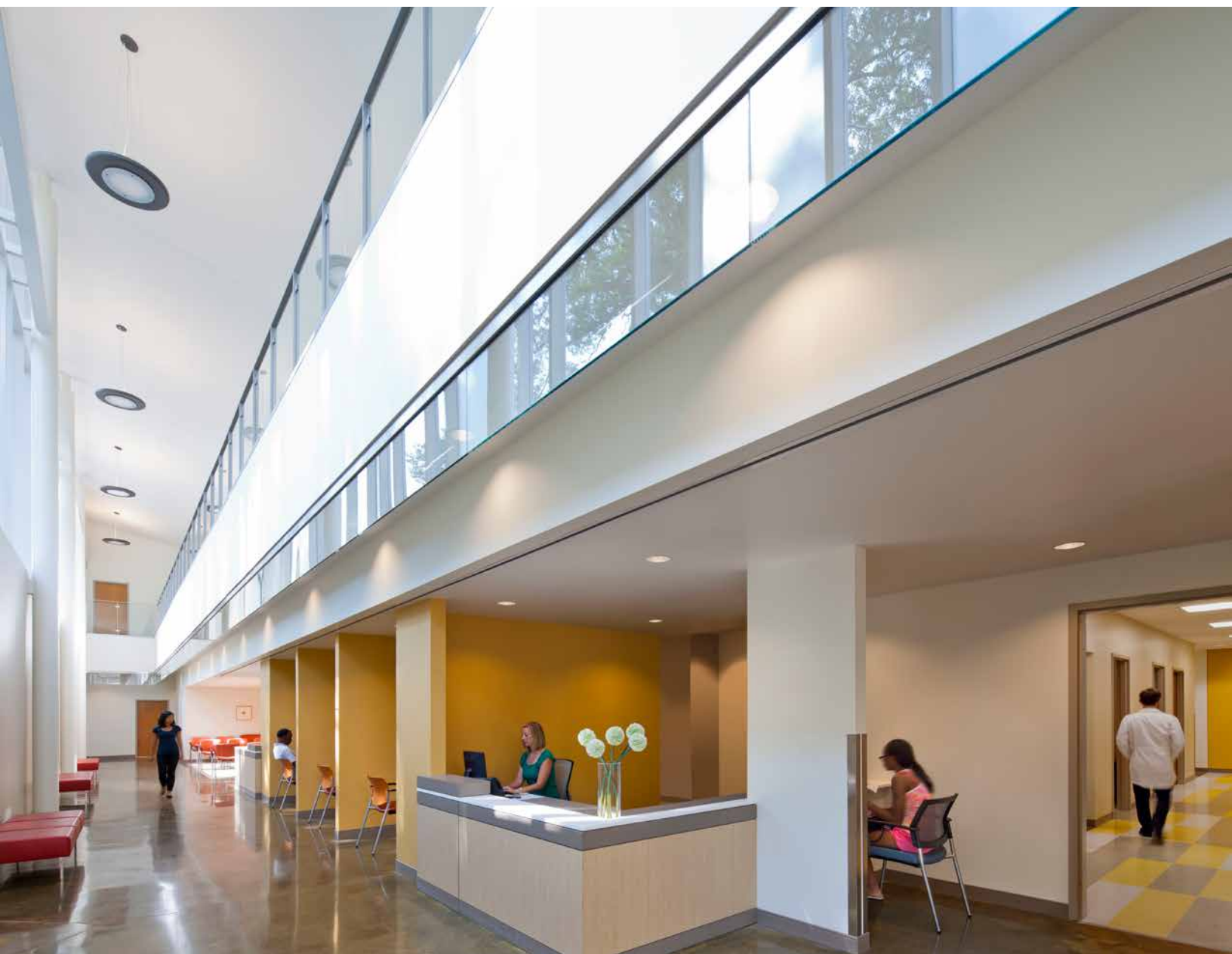
This 34,000-square-foot regional health facility located in an under-served neighborhood in southwest Atlanta combines under one roof a primary care clinic, a behavioral health clinic, childcare facilities, a dental clinic and a workforce community center. In doing so, it projects a holistic idea of wellness and a positive self-image for a challenged community. The building is also meant as a catalyst for future growth in the area.

We wanted to create a structure that feels vibrant and alive. The roof was conceived as a dynamic, protective element, a metaphoric blanket, opening upward to welcome in the public. A standing-seam “clamp” folds over the roof to house mechanical equipment, identify major entries and serve as a beacon. Inside, a decentralized, double-height circulation lobby further integrates all the programmatic components.

This design-build, fast-track project was completed, from start to finish, in 275 days.

This was a Design-Build project with Whiting Turner Construction. We were Architect of Record.





/ Roosevelt Warm Springs
Institute for Rehabilitation Warm Springs, GA
Blanchard Hall



The Blanchard Hall Outpatient Center was conceived not only to accommodate clinics, a rehabilitation gymnasium, and fabrication workshops for orthotics and prosthetics, but also to function as a new gateway to the institute, which was founded in 1927. Existing campus buildings, reflecting the classical revival aesthetic of their time, are of red brick with white-colonnaded porticos and connecting arcades. Blanchard Hall's design breaks dramatically with that style, while reinterpreting elements of its vocabulary in contemporary terms and materials.

Traditional exterior surfaces — stucco, and brick in a similar color to that of the

existing buildings — transition into facades of glass and steel. A two story entry lobby refers to the similarly-scaled “great halls” of older campus buildings. Portico and colonnade are present, but re-imagined in industrial-modern materials; these evoke the technology of today's prosthetics and orthotics, with piston-like steel rods and tensile fabric mesh canopies, which mimic the movable parts and stretchy carbon-fiber-and-fiberglass material typically used in fabricating prosthetics.

A difficult site required the structure to be set into a steep slope, and to refrain from damaging a creek which separates it from its parking area. The building's generous

roof overhang combines with the hillside to create a sense of protection while focusing attention on its glass walls which convey an open welcome. The challenge of the creek was solved with a wheelchair accessible bridge that not only provides access but offers views into the two-story therapy gym. From inside, the glass walls maximize views of natural environment and allow abundant natural light. With its prominent site on the campus' main drive and its exuberant design, Blanchard Hall reflects the progressive approach to care in rehabilitation medicine practiced at the Roosevelt Warm Springs Institute.



/ Hackensack Meridian Health Brick, NJ

Ocean Medical Center (OMC) Hirair and Anna Hovnanian
Emergency Care Center Facility Master Plan & Expansion



The modernization and 140,000 SF expansion of Ocean Medical Center's Emergency Department provides patients and their families with the highest quality care, supported by the latest technologies, in a comfortable, private, and family-friendly setting. This project initiated Phase 1 of the Facility Master Plan that EYP created with OMC to guide campus development through 2020.

This three-story addition enabled OMC to relocate and significantly expand its emergency department while adding

shelled space for future diagnostic programs and a total of 108 new private patient rooms. The building's massing and form were greatly influenced by its program. The new bed tower floats above the emergency department, creating new covered ambulatory and ambulance entrances.

Our evidence-based approach utilized data from the post-occupancy evaluation of OMC's sister hospital, Jersey Shore University Medical Center (also designed by EYP), to inform and improve unit

design. For example, some shared spaces at Jersey Shore – e.g., clean and soiled utility rooms, an equipment storage room, and a nourishment room – were added to each inpatient "neighborhood" making it more convenient for nurses to more efficiently manage patient care.

- 140,000 SF new construction
- 108-bed capacity
- Architecture, Planning, Programming, Interior Design



/ Roy L. Schneider Hospital St. Thomas, US VI
Charlotte Kimelman Cancer Institute



The new Charlotte Kimelman Cancer Institute, located at the Roy L. Schneider Hospital was founded on the principle that patients throughout the Caribbean deserve access to highly supportive, individualized and holistic care.

The Cancer Institute emphasizes education, prevention, screening, and early detection, while making available the most advanced treatment and research within a world-class center located close to home.

The following are some of the services provided at the new facility:

- Radiation Oncology & Supportive Care
- Patient & Family Supportive Care Services
- Radiation Oncology Suite
- Medical Oncology Exam Suite
- Chemotherapy/Infusion Suite
- Medical Oncology Clinical Labs
- Medical Auditorium & Physician
- Conference Center



/ Piedmont Hospital Atlanta, GA
Piedmont Spine Center



The staff of Piedmont Spine Center, occupying an existing medical office building adjacent to Piedmont Atlanta Hospital in Atlanta's Buckhead neighborhood, knows how challenging spinal disorders can be, because many of its medical professionals have personally overcome spinal injuries and disorders. As such, the nature of its new, one-floor, 15,900-square-foot facility reflects the sensibilities of both patients and caregivers.

The Center consolidates a multidisciplinary team that specializes in the diagnosis and treatment of orthopedic and neurologic disorders in a new, hybrid environment that

encompasses hospital-supported treatment, education spaces and tenant clinical office areas, integrating patient-focused services with the most recent high-tech innovations in neurosurgical capability.

Recognizing that patient satisfaction stems not only from overall outcomes but also from the quality of personal attention and the atmosphere where patients receive it, the Center is organized to make their visits coherent and satisfying. In a space that houses dedicated imaging services, a patient education center and resource library, private pre-operative teaching and consulting rooms, a conferencing

area and physician tenant areas, the floor plan establishes a distinct hierarchy of spaces to highlight key moments in the patient experience. These moments are linked together through a contemporary interior architecture of curving geometries, accent walls, glass partitions, iconic colors, attractive furnishings, soft lighting, and clear wayfinding elements. Supporting patient flow and enhancing staff efficiency, the Center reassures patients and families that Piedmont Healthcare can effectively balance over a century of caring with state-of-the-art technology.



/ Piedmont Physician's Group Atlanta, GA
Atlantic Station



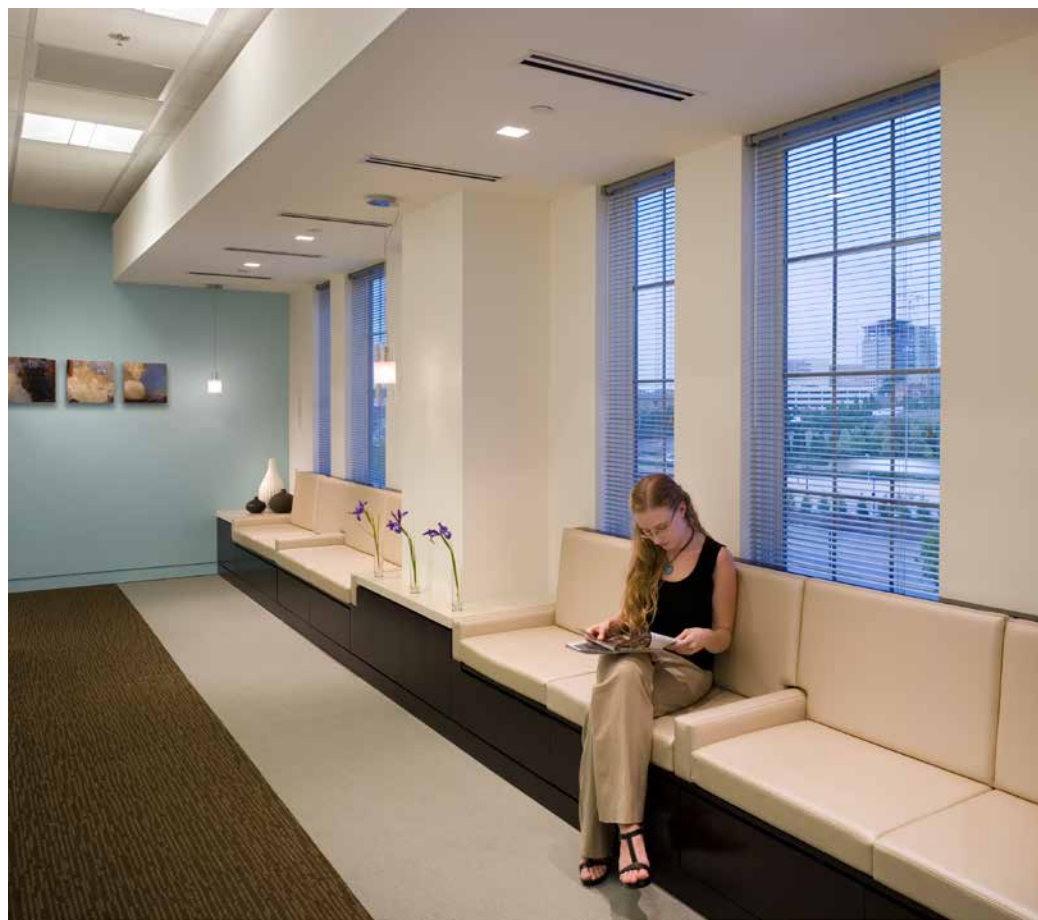
This physician's office, located in a major mixed-use redevelopment of a brownfield site in Midtown, Atlanta's most dynamic district, achieves maximum expressiveness with the least amount of ornamentation.

The client had a strong vision of excellence, as an expression of the quality of the healthcare they deliver. They wanted the interiors to reflect their patient-focused philosophy of practice, and eliminate any

sense of complexity. Thus the interiors employ a vocabulary focusing on simplicity of plane, line, material and color — an approach that is faithful to the principles of reduction essential to the modernist aesthetic. Every detail, from recessed magazine holders to soap dispensers and coat hooks, was considered in this light. The ceilings heights range from nine to over ten feet, to maximize natural light and views to the outdoors. The result is a

tailored background accented by subtle touches of crisp color, architectural lighting and gallery artwork. The solution is one of purity, serenity, and contemporary urbanity, supporting the notion of "Healthcare without Complexities."

- Architecture, Design Medical Planning, Interior Design, and Furniture Selection



/ NYU Langone Medical Center Brooklyn, NY
Bay Ridge Ambulatory Care Center Renovations



NYULMC is leasing the entire building located at 6740 4th Avenue in Brooklyn and renovating all floors to house outpatient healthcare spaces, including radiology at the first floor and physician practices on floors 2, 3, and 4.

The immediate work for Phase 1 consists of a fast-track design for demolition and build-out of the fourth floor (approximately 10,369 GSF). A feasibility study for floors 1-3 is being done to confirm the programs' ability to fit into the spaces. While the intended fit-out will not be Article 28, NYULMC would like to design to Article 28 standards to facilitate potential future conversion.

The proposed fourth floor layout consists of a physician practice and associated exam spaces. The design parti consists of a five-foot-long corridor running uninterrupted along the existing exterior window walls, which will bring plentiful daylight into the floor plate.

Exam rooms are internal and all doctors' offices are collocated and have windows. There is a main waiting and reception area, an open medical assistant station in close proximity to the first grouping of exam rooms, and a satellite medical assistant station adjacent to the other exam rooms. In addition, a phlebotomy room is located with easy access to the front of the suite. The program also includes a dual detector x-ray and its associated changing rooms and gowned waiting.

The proposed Phase 2 layout for floors 2 and 3 is very similar to the fourth floor, with the exception of omitting the x-ray in favor of additional exam rooms. Building infrastructure and elevator locations as planned during Phase 1 will still accommodate the lower levels.

The first floor program is expected to include a diagnostic imaging facility, as well as a new main public entry to the building. The design team proposed closing off the secondary entrance at the crux of Senator Street and 4th Avenue and shifting the existing main entrance (along 4th Avenue) one bay north. Exterior signage and a new canopy will also make the main entrance a recognizable feature on the street.

This new entry will be slightly inset and will also include a glass vestibule to help mitigate weather fluctuations. Overall the entry sequence redesign is intended to create an appropriate and welcoming street presence for NYU's flagship Bay Ridge clinic.

- Size: 58,000 SF



Level 1



- CT
- MRI
- Staff/Service
- Ultrasound
- X-Ray

Level 4



- Patient Area
- Staff Area
- Building Support
- Patient Circulation
- Staff Circulation

Children's Health



/ CHRISTUS Santa Rosa San Antonio, TX
Children's Hospital of San Antonio (CHOSA)



Nearly every department in this 12-level facility has been reimagined, modernized, and relocated to transform an adult and pediatric facility into a stand-alone children's hospital. The child-focused, family-friendly healthcare facility is the region's first hospital dedicated solely to pediatric care.

The *parti* organizes "on-stage" and "off-stage" circulation spaces to separate clinical care and public spaces from places where staff transfer patients and equipment or enjoy quiet breaks. Already implemented in several of our other projects, this innovative concept facilitates security, enhances operational efficiencies, and reduces unnecessary

noise within clinical areas. To further improve security, the building has been expanded with a new lobby to create a single point of public entry.

The design of the new lobby organizes public spaces for gathering and dining around an egg-shaped chapel that offers families and visitors a private and peaceful respite. A transparent feature wall extends the restful blue-and-white color palette. Colorful, light-filled patient rooms with tables for eating or playing games create a reassuring, home-like atmosphere for children and their families. A demonstration kitchen enables Child Life Service staff to offer healthy cooking classes for children and their families.

- 400,000 GSF modernization
- 10,000 GSF new
- 195 beds
- Neonatal Intensive Care
- Pediatric Intensive Care
- Pediatric Intermediate Care
- Hematology/Oncology
- Surgical Suites
- Rehabilitation
- Women's Services

We were Architect of Record and Project Architect in association with Overland Partners of San Antonio.



/ Kennedy Krieger Institute Baltimore, MD
Harry and Jeanette Weinberg Center for
Developmental Disabilities



This award-winning facility is an oasis of hope and confidence for children and adolescents with brain and spinal cord difficulties, as well as an affirmation for dedicated caregivers and staff. Dynamic design seamlessly integrates building, interior, and landscape to create a holistic healing environment. The new building collocates research, education, and therapeutic outpatient services that had previously been housed in scattered locations of the Kennedy Krieger Institute, an affiliate of the Johns Hopkins School of Medicine.

Glass walls advance the Center's mission by showcasing its work to the city while admitting daylight and views. The block-long therapy garden – organized into distinct “rooms” devoted to mobility

activities for young patients, and respite for families and staff – simultaneously respects the need for privacy and proclaims the Center's presence. The design was conceived to express therapy in its form and mass, research in its curtain wall, and hope in its transparency.

Essential facilities, including examination rooms, therapy pools and gyms and a conference center, are accessed through the expansive two-story lobby whose organic shapes, nature-inspired colors, and invitingly tactile materials extend a soothing welcome. A multi-functional treatment area accommodates occupational and physical therapy, speech and audiology therapy, and an Activities of Daily Living (ADL) suite.

- 115,000 GSF
- 40 examination rooms
- Physical therapy, spinal cord therapy & sensory integration gyms
- OT/PT/speech/audiology/ADL suite
- Conference center
- Modern Healthcare/American Institute of Architects Design Award – Honorable Mention ASID Design Excellence Award (Healthcare) – Gold
- IIDA Best of the Best Awards (Healthcare) – Top Honor
- *Contract Design Magazine*, Honorable Mention (Healthcare Environment)



/ University of Virginia Health System

Charlottesville, VA

The Battle Building at UVA Children's Hospital



Two distinct healthcare units –UVA's Outpatient Surgery Center and Outpatient Children's Hospital Clinics – are united in this campus gateway building, the 21st-century counterpart to Thomas Jefferson's iconic rotunda. The design organizes 36 specialty clinics into interdisciplinary, multi-functional care neighborhoods. Complementary clinics are conveniently collocated so that multiple caregivers can attend to patients in one place, rather than requiring patients to go from one clinic to another.

To simplify wayfinding for children and families, floors are organized with wayfinding that tells the story of UVA and Charlottesville. The child-focused facility uses static displays and interactive features to engage young patients with a storytelling theme that highlights classics of children's literature including *Charlotte's Web*, *Curious George*, and *The Jungle Book*.

The program features a "Main Street," 40-foot-long interactive storytelling walls in each of the four upper-floor waiting rooms, and family activity areas.

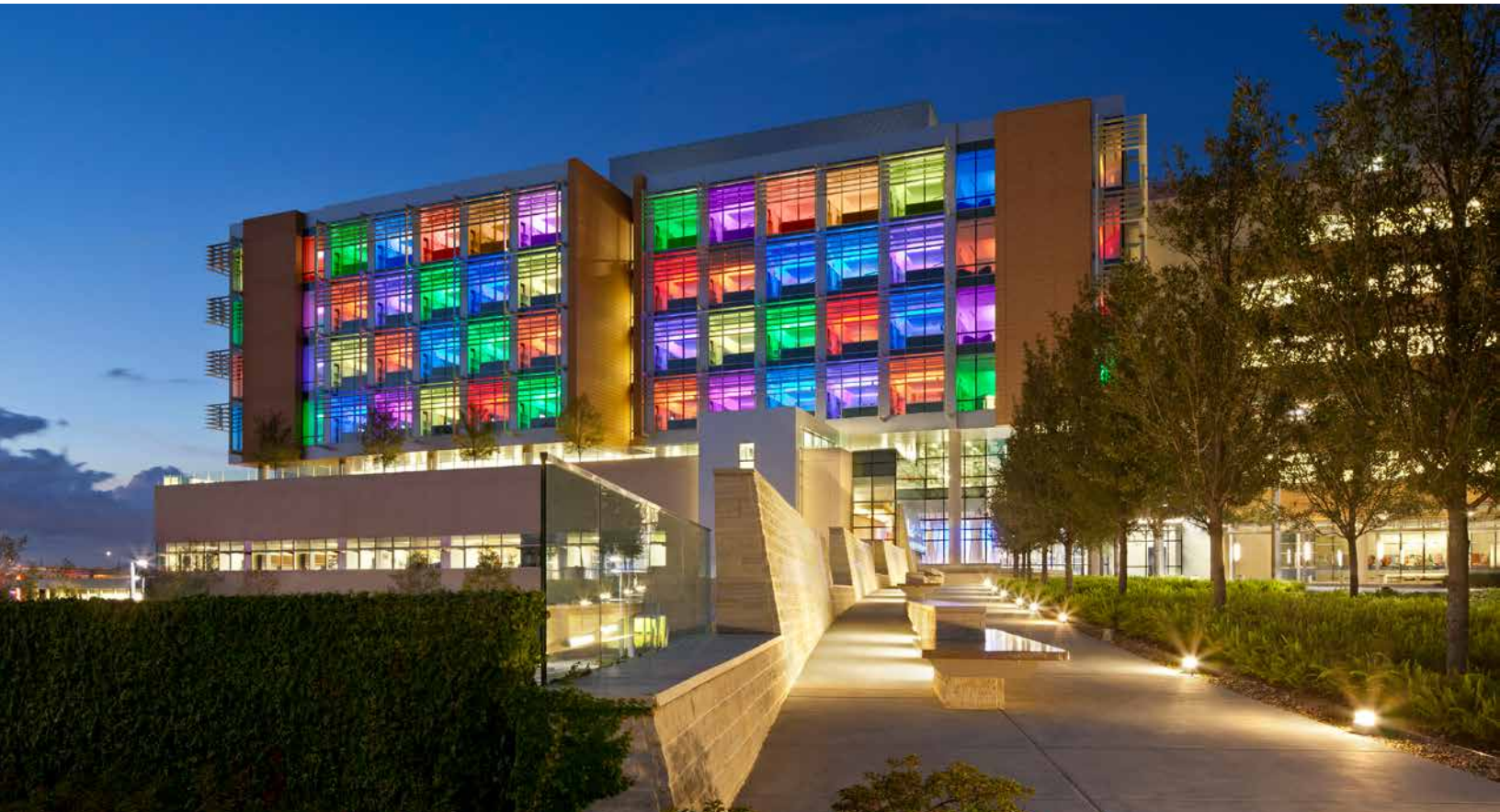
- LEED Gold certified
- 200,300 GSF
- 75 examination rooms
- 12 operating rooms
- 36 specialty clinics

Odell Associates were Architect of Record.



/ Nemours Children's Health System Orlando, FL

Nemours Children's Hospital



Pediatric healthcare in Central Florida has been transformed by a new facility that features the only emergency department designed especially for children. Outpatient clinics and inpatient rooms for specific medical specialties are in adjacent wings of the same floor with shared waiting spaces. Whether hospitalized or visiting a clinic, children see the same physicians and clinical staff, providing reassuring continuity.

Private patient rooms provide home-like overnight accommodations for parents; elevator lobbies include laundry facilities and a concierge station. The program includes family lounges, playrooms, landscaped rooftop terraces, interactive water features, one-acre “discovery

garden,” and outdoor community stage for live performances.

The design accommodates the high water table of the 60-acre greenfield site with a curving gesture. Bioswales and retention ponds collect and manage rainwater. Extensive solar studies informed the design of solar shades to mitigate the intense Florida sun.

This project was delivered in collaboration with Perkins+Will, Associate Architect.

- 630,000 GSF
- 60-acre site
- LEED Gold certified

- ENR Southeast, Project of the Year
- ENR Southeast, Best in Healthcare
- ENR Southeast, Award of Merit for Safety
- IIDA Best of the Best Award
- IIDA Best of the Best Award, Top Honor in Healthcare
- ABC Excellence in Construction, Project of the Year
- AIA Orlando, Design Award of Honor
- ABC Central Florida, Best Healthcare Project
- Healthcare Facilities Symposium Distinction Awards, User-Centered Award
- ASLA Florida, Award of Excellence
- ASHRAE Central Florida, Technology Award



/ St. Jude Children's Research Hospital Memphis, TN
Kay Research and Care Center



The nature of care provided for patients at this world-renowned facility requires that children and their families be admitted for months at a time. Design provides respite from the stress of their situation through imaginative play and/or immersive distraction.

The client embraced the modernization project as an opportunity to create a “magical and whimsical” experience that would be engaging and fun for children and appealing for all ages. The inventive design introduces a different theme on Inpatient floors 3, 4 and 5: Nature’s Orchestra; Discover the Sea; and Explore Space.

A 50-foot-long interactive Journey Wall – with an LED curtain and immersive audiovisual system – guides children and their families from the elevators to each unit. The themes each entrance wall inform the color palette, custom interactive games, custom graphic design, artwork selection, furniture selection and interior design of every floor.

To encourage the children to get out of their rooms and socialize with others, patient corridors feature interactive shadow boxes and Discovery Walls whose nine flat-panel LCD displays are programmed for gestural interactive play.

The centrally located Imagine Room is a multipurpose immersive space whose interactive screen curves into the ceiling to offer virtual experiences. Patients can soar into space, fly above trees, or go swimming with fish. Complete with cinema chairs and a stage area, the Imagine Room also shows movies and displays interactive light shows. The room also supports custom gestural interactive games or creates a stage for a puppet show.

- Interior design, interior architecture, furniture selection, Graphic Design, art selection and Special Features. Evans Taylor Foster Childress were Architect of Record.



/ Baptist Medical Center
Wolfson Children's Hospital Jacksonville, FL
Adult / Pediatric Patient Tower Expansion



The opening of the 11-story, 300,000-square-foot J. Wayne and Delores Barr Weaver Tower on the Baptist Medical Center campus in Jacksonville, Florida, designed by EYP, marks an important milestone for Wolfson Children's Hospital, a 216-bed institution founded in 1955. Wolfson is critical to the healthcare of its growing region, providing North Florida, South Georgia and the Florida Panhandle with their only full-service tertiary pediatric hospital. The new tower expands existing facilities on the downtown campus for Baptist Jacksonville Hospital as well as Wolfson, an institution praised as one of America's Best Children's Hospitals by U.S. News & World Report.

In the lower half of the tower occupied by Wolfson, the facilities include pediatric cardiovascular intensive care, operating suites that permit MRI and CT scans during surgery, and more patient beds, along with a neurological operating room and neurological intensive care for children and adults. Wolfson's interiors represent a very special place, as children promptly discover. To exploit the strong relationship between environment and clinical outcomes, EYP developed special nature motifs for every floor. Featuring rivers, forests and grasslands inspired by nearby natural habitats, the motifs shape the interiors through large, colorful and dramatic passive and interactive graphics.

This life-affirming vision extends into patient rooms. All sized 100-square-feet bigger than existing counterparts, the new accommodations are all family suites with full bathrooms, refrigerators, safes and daybeds. Not only do these suites feel more like homes than hospitals, children happily find they have their own animal themes.



/ healthcare client list

Al Dupont for Children
Advocate Children's Hospital
Advocate Christ Medical Center
AFLAC Cancer Center at Egleston
A.O. Fox Memorial Hospital
Albany Medical Center
Amsterdam Memorial Hospital
Anson County Hospital
Atlanta Medical Center
Baptist Medical Center
Baylor College of Medicine
Billings Clinic
Brazosport Memorial Hospital
Camden Medical Park
Central Manchester & Manchester University Hospitals
Centura Health
Charlotte Kimelman Cancer Center
Children's Healthcare of Atlanta
Children's Hospital of New Orleans
Children's Hospital of Philadelphia
Children's Hospital of San Antonio
Children's Medical Center of Dallas
Chowan Hospital
CHRISTUS Health
CHRISTUS Mother Frances - Sulphur Springs
CHRISTUS Santa Rosa
CHRISTUS St. Frances Cabrini
CHRISTUS Trinity Mother Frances Health
Columbus Regional Health System
Comanche County Memorial Hospital
Craven Regional Medical Center
CUNY Sophie Davis School of Biomedical Education
Duke University Medical Center
East Texas Physician's Alliance
ECU Brody School of Medicine
ECU School of Dental Medicine
Ellis Hospital
Exempla Healthcare
FirstHealth Richmond Memorial Hospital
Fort Bragg Medical Clinic (USACE)
Fort Dix Hospital (USACE)
Four Winds Hospital, Saratoga
Georgia Regents University Children's Medical Center
Georgia Regional Hospital
Grady Health System
Greenville Hospital Systems
Gwinnett Investment Group Cardiology Center
Greenwood Leflore Hospital
Hackensack-Meridian Health System
Halifax Memorial Hospital
Harbor Hospital
Harlem Hospital Center
Houston Methodist Hospital System
Jacobi Medical Center
Joe Dimaggio Children's Hospital
Johnston Memorial Hospital
Kennedy Krieger Institute
Lenoir Memorial Hospital
Littleton Adventist Hospital
Lutheran General Hospital
Maria Parham Medical Center
Marquette General Hospital
Martin General Hospital
Mary Imogene Bassett Hospital
May Clinic
Medical College of Virginia
Medical University of South Carolina
Memorial Hermann Health System
Mission Hospitals
Montgomery College
Morristown Memorial Hospital
Nash Health Care System
NC Correctional Institution for Women
Nemours Children's Hospital
New Hanover Regional Medical Center

/ healthcare client list

New York Medical College at Westchester
Medical Ct

North Oaks Medical Center

Northwell Health

Northern Health Authority of British Columbia

NYU Polytechnic

NYU School of Dentistry

NYU School of Nursing

Obstetrical Gynecological Associates (OGA)

Ocean Medical Center

Oklahoma Heart Hospital System

Onslow Memorial Hospital

OSF/Children's Hospital of Illinois

Palmetto Health Richland Children's Hospital

Piedmont Hospital

Pitt County Hospital

Platte Valley Medical Center

Radiology Complex & Women's Imaging Center

Randolph Hospital

Rex UNC Health Care

Riverview Hospital

Robert Wood Johnson University Hospital

Ronald McDonald House of Charities

Roosevelt Warm Springs Institute for
Rehabilitation

Rowan Regional Medical Center

Saint Elizabeth's Hospital, DCDMH

Sarasota Memorial Hospital Center for Women
& Children

Sitrin Health Center

St. Clare's Hospital

St. Joseph Regional Health System

St. Jude Children's Research Hospital

St. Luke's Episcopal Hospital

St. Mary's Hospital

St. Mary's Hospital for Women

St. Peter's Hospital

Stamford Health

Stanly Regional Medical Center

Suburban Hospital/Johns Hopkins Medicine

SUNY Stonybrook School of Dental Medicine

SUNY Upstate Medical University

Swedish Medical Center

Texoma Medical Center

The Institute for Rehabilitation and Research

The University of Iowa Hospitals

The University of Texas Health Science Center

MD Anderson Cancer Center

Tidewater Community College

Trinity Medical Center

UNC Hospitals

UNC School of Medicine

University at Albany

University Hospital

University of Chicago Hospitals

University of Colorado Health

University of Louisville

University of New England

University of New Mexico Medical Group

University of Pennsylvania

University of Texas Medical Branch at Galveston

University of Virginia

US Coast Guard

Veteran's Administration

Valley View Medical Center

Virginia Commonwealth University

Wake Forest Baptist Health

Wake Forest University

Waterstone Medical Office Building

Watson Army Hospital (USACE)

Wayne Memorial Hospital

Wellstar Health System

West Central Regional Hospital

White Plains Hospital

William Beaumont Hospital

Winship Cancer Institute

/ awards & honors

2017 IIDA Best of the Best Awards - Overall

St. Jude Children's Research Hospital
Kay Research and Care Center

2017 IIDA Best of the Best Awards - Large Healthcare

St. Jude Children's Research Hospital Kay Research and
Care Center

2016 The Chicago Athenaeum American Architecture Award

OSF Saint Francis Medical Center
Children's Hospital of Illinois

2015 Healthcare Environment Award by Contract Magazine - Honorable Mention

Angie Fowler Adolescent & Young Adult Cancer Institute

2015 AIA GA Design Awards – Merit Award

Nemours Children's Hospital

2015 IIDA Best of the Best Awards - Small Healthcare

Rainbow Babies & Children's Hospital AFAYA

2015 IIDA Best of the Best Awards - Healthcare Award of Merit Large Healthcare

The Battle Building at the University of Virginia

2014 AIA Honor Award - Richmond, Virginia

University of Virginia Battle Building

2014 Associated Builders and Contractors FFC Chapter Project of the Year Award

Weaver Tower at Baptist Medical Center

2014 Health Facilities Construction Quarterly

Top Architects - #1 for Healthcare Renovation

2014 UT System, Outstanding HUB Participation Award

UT Health Science Center at Tyler, Academic Center
Level 3 Fit Out

2013 Interior Design Best of the Year Finalist- Healthcare Category

Nemours Children's Hospital

2013 ENR Southeast - Best in Healthcare Project

Nemours Children's Hospital

2013 ENR Southeast - Project of the Year

Nemours Children's Hospital

2013 ENR Southeast - Award of Merit for Safety

Nemours Children's Hospital

2013 ENR Southeast - Best Project - Award of Merit

Weaver Tower at Baptist Medical Center

2013 Houston Business Journal, Landmark Award, Office Building Development

UT MD Anderson Cancer Center, Mid Campus Building 1

2013 ABC Central Florida – Best Healthcare

Nemours Children's Hospital

2013 ABC Excellence in Construction – Project of the Year

Nemours Children's Hospital

2013 Healthcare Design Renovation - Best in Category

Children's Healthcare of Atlanta Nadia's Room

2013 Symposium Distinction Awards - User-Centered Award

Nemours Children's Hospital

2013 UT System, Outstanding HUB Participation Award

University of Texas Research Park Complex

2013 CMAA SAC Project Achievement - New Construction

Adamsville Regional Health Center

2013 CIMA Strategic Services/Ballard Howell Lichtig, Collaborators of the Year Award - Public Projects

UT MD Anderson Cancer Center, Mid Campus Building 1

2013 ASLA Florida Chapter - Award of Excellence

Nemours Children's Hospital

2013 ASHRAE Chapter Technology Award – Central Florida

Nemours Children's Hospital

2013 AIA - Orlando Design Award of Honor

Nemours Children's Hospital

2013 International Design Award - Honorable Mention

Nemours Children's Hospital

2013 AIA/AAH Healthcare Design Award

Adamsville Regional Health Center

2013 IIDA Best of the Best Awards - Healthcare

Top Honor in Healthcare for Nemours Children's
Hospital

2013 IIDA Best of the Best Awards - Overall

Top Honor Overall for Nemours Children's Hospital

2012 DBIA Southeast Region Design Build Award

First Place: Public Sector, Building Under \$15 Million

Adamsville Regional Health Center

/ awards & honors

2012 *Engineering News-Record* Texas & Louisiana - Best Office

UT MD Anderson Cancer Center, Mid Campus Building 1

2012 Texas Masonry Council, Golden Trowel Awards, Hardscape/Landscape Design - Honorable Mention

UT MD Anderson Cancer Center, Mid Campus Building 1

2012 Antron Carpet Fiber, Designed to Perform Award - Healthcare Merit

The Methodist Hospital Outpatient Center

2011 Modern Healthcare Design Award - Unbuilt Category

Nemours Children's Hospital

2011 Society of Environmental Graphic Design - Merit Award

Palmetto Health Children's Hospital

2010 Bently Systems Be-Inspired Awards

Advancing Interoperability Award - Nemours Foundation

2010 ASID Design Excellence Award - Healthcare

Kennedy Krieger Institute - Gold

Piedmont Spine Center - Silver

2010 IIDA Best of the Best Awards - Healthcare

Top Honor in Healthcare for Kennedy Krieger Institute

2010 AGC Houston, APEX Award for Project Excellence, Concrete/Structural Category

UT MD Anderson Cancer Center, Mid Campus Building 1

2010 Design & Health (IADH), International Academy Awards - First Place, Healthcare Project over 40,000 m2

Jersey Shore University Medical Center

2010 Antron Carpet Fiber, Designed to Perform Award, Healthcare Category Winner

The Methodist Hospital, Breast Imaging Center at Upper Kirby

2010 New Jersey Business and Industry Association, Good Neighbor Award, Special Projects

Jersey Shore University Medical Center

2010 Texas Construction, Best of Awards, Healthcare Category Winner

The Methodist Hospital Outpatient Center

2009 Contract Design Magazine Healthcare Environment - Honorable Mention

Kennedy Krieger Institute

2009 Modern Healthcare/American Institute of Architects

Design Award - Honorable Mention -

Kennedy Krieger Institute

2009 IIDA Best of the Best Awards - Healthcare

Top Honor in Healthcare for Palmetto Health Children's Hospital

2009 New Jersey Golden Trowel Awards - Special Recognition

Morristown Memorial Hospital, Simon Lobby

2008 Interiors Awards in Large Healthcare by Contract

Citation - Children's Healthcare of Atlanta

2008 IIDA Best of the Best Awards - Healthcare

Best of the Best Overall Award -

Children's Healthcare of Atlanta

Top Honor in Healthcare -

Children's Healthcare of Atlanta

2007 Georgia American Institute of Architects - Design Citation

Children's Healthcare of Atlanta - Interiors

2007 ASID Georgia Chapter Design of Excellence Awards - Healthcare

Gold Award for Product/Custom Design - Children's Healthcare of Atlanta - Scottish Rite

Gold Award - Piedmont Physicians Group at Atlantic Station

Silver Award - Reuter Children's Outpatient Center

2007 IIDA Best of the Best Awards - Healthcare

Top Honor - Cardiovascular Group Medical Office Building

2007 Healthcare Environment Award by Contract Magazine - Honorable Mention

Children's Healthcare of Atlanta

2006 Modern Healthcare/American Institute of Architects

Design Award - Honorable Mention -

Reuter Outpatient Center

2006 The Center for Health Design Annual Healthcare Environment Award

Citation - The University of Chicago Hospitals

2006 The Center for Health Design -

Annual Healthcare Environment Award

Citation - Cardiovascular Group Medical Office Building

/ awards & honors

2006 ASID Georgia Chapter Design of Excellence - Healthcare

Gold Award - Cardiovascular Group Medical Office Building

2006 Southeast Construction Award of Merit

Cardiovascular Group Medical Office Building

2005 Georgia American Institute of Architects Design Citation

The Radiology Complex & Women's Imaging Center

2005 American School & University Architectural Competition

Citation - Comer Children's Hospital at the University of Chicago

2005 American School & University - Educational Interiors Showcase

Gold Citation - Winship Cancer Research Institute

2005 ASID Georgia Chapter Design of Excellence - Healthcare

Silver Award - Radiology Complex & Women's Imaging Center

Bronze Award - Winship Cancer Institute

2005 The Center for Health Design - Annual Healthcare Environment Award

Honorable Mention - Winship Cancer Institute

2002 The Center for Health Design Annual Healthcare Environment Award

Honorable Mention - North Oaks Medical Center

2000 Modern Healthcare/American Institute of Architects

Design Award - top design award- Medical College of Georgia Children's Medical Center

2000 South Atlantic Regional Conference Merit Award - Interiors

Medical College of Georgia Children's Medical Center

1999 Metal Construction Association Scholarship Award

Medical College of Georgia Children's Medical Center

1999 Metal Construction Association President's Award

Medical College of Georgia Children's Medical Center

1998 The National Symposium on Healthcare Design

The 10th Annual Healthcare Environment Award
AFLAC Cancer Center at Children's Healthcare of Atlanta

1998 Modern Healthcare/American Institute of Architects Design Award - top design award

AFLAC Cancer Center at Children's Healthcare of Atlanta

1998 Sixth Annual International Interior Design Acclaim Awards/Los Angeles

For the Medical College of Georgia Children's Medical Center:

First Place Award for custom upholstery design - Deepa Textiles

Honorable Mention for custom cubicle curtain design - Deepa Textiles

1997 Modern Healthcare/American Institute of Architects Design Award- Top Design Award in "Unbuilt" Category

Medical College of Georgia Children's Medical Center

1993 The National Symposium on Healthcare Design The 5th Annual Healthcare Environment Award

Cardiac Intensive Care Unit at the Children's Healthcare of Atlanta

/ capabilities

Architecture

- Design
- Planning
- Programming
- Interior Design
- Life Safety
- Signage & Wayfinding
- Workplace Strategy & Design
- Master Planning

Energy

- Energy Data Analysis
 - Energy modeling
 - Benchmarking
- DSM Programs for Utilities
- Building Performance Optimization
 - Energy Audits
 - Energy Master Plans
 - Retro-commissioning

Engineering

- Electrical
- Fire Protection
- Mechanical
- Plumbing
- Security
- Structural
- Telecommunications

Software

- B3 Benchmarking
- NEO Net Energy Optimizer®
- Custom tools with WeidtSim®

Consulting

- Environmental Graphic Design
- Marketing Communications
- Public Relations

/ about EYP

EYP is a global provider of comprehensive high-performance building design, research, and consulting services. We are five sectors – Higher Education, Government, Healthcare, Science & Technology, and Energy – who work as one firm to help our clients address some of the most critical issues facing our nation and our world. Our professionals work across 15 offices in the United States and Europe.

The only design firm to have been ranked in the Top 5 for sustainability for four consecutive years by *Architect Magazine*, EYP is committed to creating rich, productive, and inspiring environments that promote human well-being, preserve natural resources, and provide flexibility and resilience for the future. Our knowledge-based innovation strategy helps promote action-oriented public dialogue about the future of the built environment.

Disciplines

Architecture, Engineering, Energy, Environmental Graphic Design, Interior Design, Master Planning

Integrated Design Expertise

- Academic Innovation
- Diplomatic Facilities
- Energy & Sustainability
- Health Education
- Healthcare
- Historic Preservation
- Libraries
- Master Planning
- Mission Critical
- Modernization
- Science & Technology
- STEM
- Student Life
- Workplace

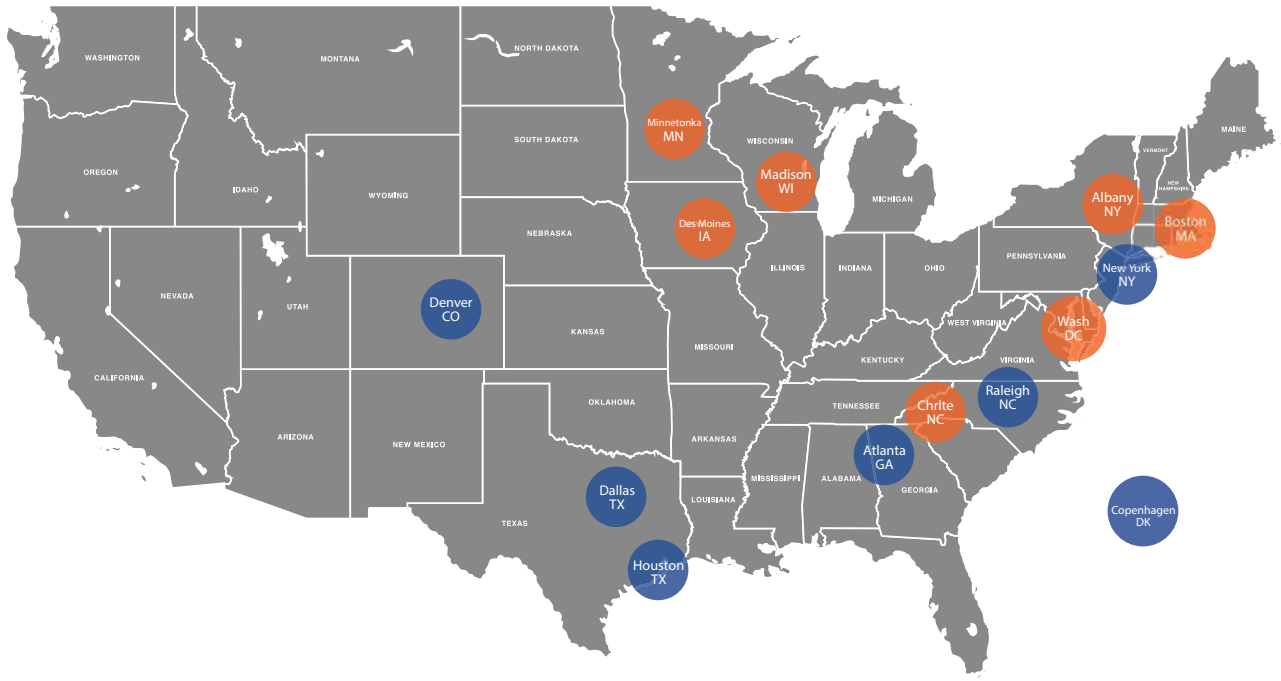
Research

The right building design can help organizations advance their mission and goals. Our research program makes us better designers and more valuable advisors to our clients – and helps our clients make more strategic decisions about their buildings. Our open innovation approach values collective intelligence. We partner with outside experts in many disciplines to transcend the limits of current thinking and expectations, collaboratively exploring and testing ideas in Building Science, Energy, Healthcare Design, Living-Learning, STEM, and Workplace Strategy.

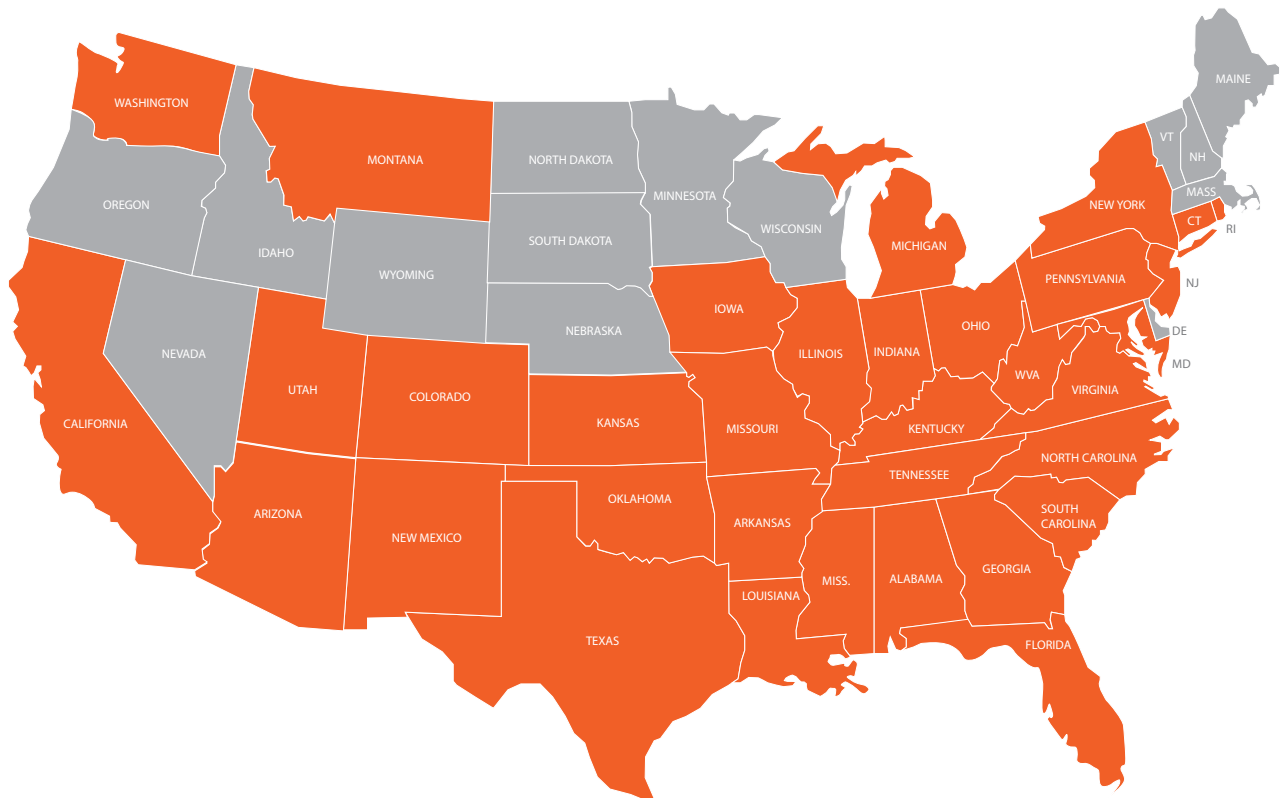
Recognition

- 2017 Architect 50 – *Architect Magazine*
- 2017 Top 25 Architecture Firms – *Architectural Record*
- 2017 Top 25 Architecture & Engineering Firms – *Engineering News-Record*
- 2017 MEP Giants – *Consulting-Specifying Engineer*
- 2017 Giants 300 – *Building Design + Construction*
- 2017 Top 500 Design Firms – *Engineering News-Record*
- 2017 Top Architects – #1 for Healthcare Renovation – *Health Facilities Construction Quarterly*

/ locations Healthcare Studios represented in blue



/ healthcare project locations





eypae.com

Design for your people, your purpose, our planet.

© 2018 EYP Inc. All rights reserved.